

Cdh1 antibody - C-terminal region
Rabbit Polyclonal Antibody
Catalog # AI14376**Specification**

Cdh1 antibody - C-terminal region - Product Information

Application	WB
Primary Accession	P09803
Other Accession	NM_009864 , NP_033994
Reactivity	Human, Mouse, Rat, Rabbit, Pig, Horse, Bovine, Guinea Pig, Dog
Predicted	Human, Mouse, Rabbit, Pig, Chicken, Horse, Bovine, Guinea Pig, Dog
Host	Rabbit
Clonality	Polyclonal
Calculated MW	98kDa KDa

Cdh1 antibody - C-terminal region - Additional Information**Gene ID** 12550**Alias Symbol** AA960649, Ecad, L-CAM, MGC107495, UVO, Um**Other Names**

Cadherin-1, ARC-1, Epithelial cadherin, E-cadherin, Uvomorulin, CD324, E-Cad/CTF1, E-Cad/CTF2, E-Cad/CTF3, Cdh1

Format

Liquid. Purified antibody supplied in 1x PBS buffer with 0.09% (w/v) sodium azide and 2% sucrose.

Reconstitution & Storage

Add 50 ul of distilled water. Final anti-Cdh1 antibody concentration is 1 mg/ml in PBS buffer with 2% sucrose. For longer periods of storage, store at 20°C. Avoid repeat freeze-thaw cycles.

Precautions

Cdh1 antibody - C-terminal region is for research use only and not for use in diagnostic or therapeutic procedures.

Cdh1 antibody - C-terminal region - Protein Information**Name** Cdh1**Function**

Cadherins are calcium-dependent cell adhesion proteins (PubMed:11976333). They preferentially interact with themselves in a homophilic manner in connecting cells; cadherins may thus contribute to the sorting of heterogeneous cell types. CDH1 is involved in mechanisms regulating cell-cell adhesions, mobility and proliferation of epithelial cells (PubMed:11976333). Has a potent invasive suppressor role. It is a ligand for integrin alpha-E/beta-7 (By similarity).

Cellular Location

Cell junction, adherens junction. Cell membrane; Single-pass type I membrane protein. Endosome. Golgi apparatus, trans-Golgi network. Note=Colocalizes with DLGAP5 at sites of cell- cell contact in intestinal epithelial cells. Anchored to actin microfilaments through association with alpha-, beta- and gamma- catenin. Sequential proteolysis induced by apoptosis or calcium influx, results in translocation from sites of cell-cell contact to the cytoplasm. Colocalizes with RAB11A endosomes during its transport from the Golgi apparatus to the plasma membrane (By similarity)

Tissue Location

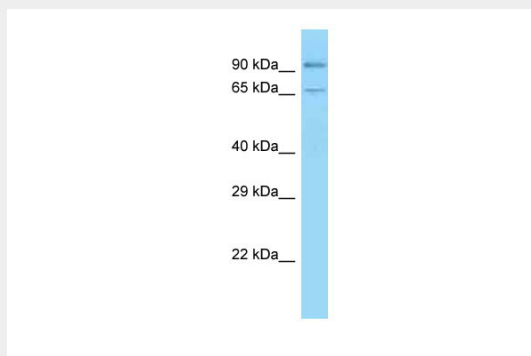
Expressed in inner and outer pillar cells of the organ of Corti (at protein level) (PubMed:30639848). Non-neural epithelial tissues.

Cdh1 antibody - C-terminal region - Protocols

Provided below are standard protocols that you may find useful for product applications.

- [Western Blot](#)
- [Blocking Peptides](#)
- [Dot Blot](#)
- [Immunohistochemistry](#)
- [Immunofluorescence](#)
- [Immunoprecipitation](#)
- [Flow Cytometry](#)
- [Cell Culture](#)

Cdh1 antibody - C-terminal region - Images



WB Suggested Anti-Cdh1 Antibody Titration: 1.0 µg/ml
Positive Control: Mouse Pancreas

Cdh1 antibody - C-terminal region - References

Nagafuchi A.,et al.Nature 329:341-343(1987).
Ringwald M.,et al.Nucleic Acids Res. 19:6533-6539(1991).
Ringwald M.,et al.EMBO J. 6:3647-3653(1987).
Behrens J.,et al.Proc. Natl. Acad. Sci. U.S.A. 88:11495-11499(1991).
Butz S.,et al.FEBS Lett. 355:195-200(1994).