

Nae1 Antibody - C-terminal region
Rabbit Polyclonal Antibody
Catalog # AI14387**Specification**

Nae1 Antibody - C-terminal region - Product Information

Application	WB
Primary Accession	Q8VBW6
Other Accession	NM_144931 , NP_659180
Reactivity	Human, Mouse, Rat, Rabbit, Pig, Horse, Bovine, Dog
Predicted	Human, Mouse, Rat, Rabbit, Pig, Horse, Bovine, Dog
Host	Rabbit
Clonality	Polyclonal
Calculated MW	60kDa KDa

Nae1 Antibody - C-terminal region - Additional Information**Gene ID** 234664**Alias Symbol** 59kDa, Appbp1**Other Names**

NEDD8-activating enzyme E1 regulatory subunit, Amyloid beta precursor protein-binding protein 1, 59 kDa, APP-BP1, Amyloid protein-binding protein 1, Nae1, Appbp1

Format

Liquid. Purified antibody supplied in 1x PBS buffer with 0.09% (w/v) sodium azide and 2% sucrose.

Reconstitution & Storage

Add 50 ul of distilled water. Final anti-Nae1 antibody concentration is 1 mg/ml in PBS buffer with 2% sucrose. For longer periods of storage, store at 20°C. Avoid repeat freeze-thaw cycles.

Precautions

Nae1 Antibody - C-terminal region is for research use only and not for use in diagnostic or therapeutic procedures.

Nae1 Antibody - C-terminal region - Protein Information**Name** Nae1**Synonyms** Appbp1**Function**

Regulatory subunit of the dimeric UBA3-NAE1 E1 enzyme. E1 activates NEDD8 by first adenylating its C-terminal glycine residue with ATP, thereafter linking this residue to the side chain of the catalytic cysteine, yielding a NEDD8-UBA3 thioester and free AMP. E1 finally transfers NEDD8 to the catalytic cysteine of UBE2M. Necessary for cell cycle progression through the S-M checkpoint.

Overexpression of NAE1 causes apoptosis through deregulation of NEDD8 conjugation (By similarity). The covalent attachment of NEDD8 to target proteins is known as 'neddylation' and the process is involved in the regulation of cell growth, viability and development.

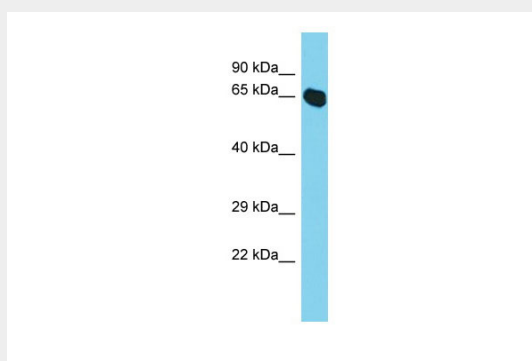
Cellular Location

Cell membrane. Note=Colocalizes with APP in lipid rafts.

Nae1 Antibody - C-terminal region - Protocols

Provided below are standard protocols that you may find useful for product applications.

- [Western Blot](#)
- [Blocking Peptides](#)
- [Dot Blot](#)
- [Immunohistochemistry](#)
- [Immunofluorescence](#)
- [Immunoprecipitation](#)
- [Flow Cytometry](#)
- [Cell Culture](#)

Nae1 Antibody - C-terminal region - Images

Host: Rabbit

Target Name: Nae1

Sample Tissue: Mouse Lung lysates

Antibody Dilution: 1.0µg/ml

Nae1 Antibody - C-terminal region - References

Park J.,et al.Mol. Cell 50:919-930(2013).