

**Utp15 antibody - middle region**  
**Rabbit Polyclonal Antibody**  
**Catalog # AI14526****Specification**

---

**Utp15 antibody - middle region - Product Information**

Application	WB
Primary Accession	<a href="#">Q8C7V3</a>
Other Accession	<a href="#">NM_178918</a> , <a href="#">NP_849249</a>
Reactivity	Human, Mouse, Rat, Rabbit, Pig, Horse, Bovine, Guinea Pig, Dog
Predicted	Human, Mouse, Rat, Rabbit, Pig, Horse, Bovine, Guinea Pig, Dog
Host	Rabbit
Clonality	Polyclonal
Calculated MW	59kDa KDa

**Utp15 antibody - middle region - Additional Information****Gene ID** 105372**Alias Symbol** **AW544865****Other Names**

U3 small nucleolar RNA-associated protein 15 homolog, Src-associated protein SAW, Utp15

**Format**

Liquid. Purified antibody supplied in 1x PBS buffer with 0.09% (w/v) sodium azide and 2% sucrose.

**Reconstitution & Storage**

Add 50 ul of distilled water. Final anti-Utp15 antibody concentration is 1 mg/ml in PBS buffer with 2% sucrose. For longer periods of storage, store at 20°C. Avoid repeat freeze-thaw cycles.

**Precautions**

Utp15 antibody - middle region is for research use only and not for use in diagnostic or therapeutic procedures.

**Utp15 antibody - middle region - Protein Information****Name** Utp15**Function**

Ribosome biogenesis factor. Involved in nucleolar processing of pre-18S ribosomal RNA. Required for optimal pre-ribosomal RNA transcription by RNA polymerase I. Part of the small subunit (SSU) processome, first precursor of the small eukaryotic ribosomal subunit. During the assembly of the SSU processome in the nucleolus, many ribosome biogenesis factors, an RNA chaperone and ribosomal proteins associate with the nascent pre-rRNA and work in concert to generate RNA folding, modifications, rearrangements and cleavage as well as targeted degradation of pre-ribosomal RNA by the RNA exosome.

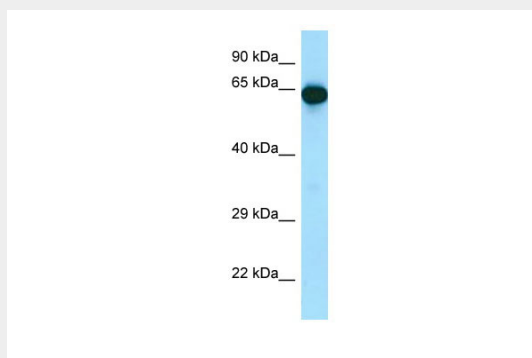
**Cellular Location**

Nucleus, nucleolus {ECO:0000250|UniProtKB:Q8TED0}. Note=Found predominantly at the fibrillar center. {ECO:0000250|UniProtKB:Q8TED0}

**Utp15 antibody - middle region - Protocols**

Provided below are standard protocols that you may find useful for product applications.

- [Western Blot](#)
- [Blocking Peptides](#)
- [Dot Blot](#)
- [Immunohistochemistry](#)
- [Immunofluorescence](#)
- [Immunoprecipitation](#)
- [Flow Cytometry](#)
- [Cell Culture](#)

**Utp15 antibody - middle region - Images**

Host: Rabbit

Target Name: Utp15

Antibody Dilution: 0.25µg/ml

Sample Tissue: Mouse Pancreas

**Utp15 antibody - middle region - References**

Baker S.J., et al. Submitted (SEP-2002) to the EMBL/GenBank/DDBJ databases.  
Carninci P., et al. Science 309:1559-1563(2005).