

**IL27 antibody - C-terminal region**  
**Rabbit Polyclonal Antibody**  
**Catalog # AI14556****Specification**

---

**IL27 antibody - C-terminal region - Product Information**

Application	<b>WB</b>
Primary Accession	<a href="#">Q8NEV9</a>
Other Accession	<a href="#">NM_145659</a> , <a href="#">NP_663634</a>
Reactivity	<b>Human</b>
Predicted	<b>Human</b>
Host	<b>Rabbit</b>
Clonality	<b>Polyclonal</b>
Calculated MW	<b>27kDa KDa</b>

**IL27 antibody - C-terminal region - Additional Information****Gene ID** 246778**Alias Symbol** **IL-27, IL-27A, IL27p28, IL30, MGC71873, p28, IL27A****Other Names**

Interleukin-27 subunit alpha, IL-27 subunit alpha, IL-27-A, IL27-A, Interleukin-30, p28, IL27, IL27A, IL30

**Format**

Liquid. Purified antibody supplied in 1x PBS buffer with 0.09% (w/v) sodium azide and 2% sucrose.

**Reconstitution & Storage**

Add 50 ul of distilled water. Final anti-IL27 antibody concentration is 1 mg/ml in PBS buffer with 2% sucrose. For longer periods of storage, store at 20°C. Avoid repeat freeze-thaw cycles.

**Precautions**

IL27 antibody - C-terminal region is for research use only and not for use in diagnostic or therapeutic procedures.

**IL27 antibody - C-terminal region - Protein Information****Name** IL27**Synonyms** IL27A, IL30**Function**

Associates with EBI3 to form the IL-27 interleukin, a heterodimeric cytokine which functions in innate immunity. IL-27 has pro- and anti-inflammatory properties, that can regulate T-helper cell development, suppress T-cell proliferation, stimulate cytotoxic T-cell activity, induce isotype switching in B-cells, and that has diverse effects on innate immune cells. Among its target cells are CD4 T-helper cells which can differentiate in type 1 effector cells (TH1), type 2 effector cells (TH2)

and IL17 producing helper T-cells (TH17). It drives rapid clonal expansion of naive but not memory CD4 T-cells. It also strongly synergizes with IL-12 to trigger interferon-gamma/IFN- gamma production of naive CD4 T-cells, binds to the cytokine receptor WSX-1/TCCR which appears to be required but not sufficient for IL-27- mediated signal transduction. IL-27 potentiate the early phase of TH1 response and suppress TH2 and TH17 differentiation. It induces the differentiation of TH1 cells via two distinct pathways, p38 MAPK/TBX21- and ICAM1/ITGAL/ERK-dependent pathways. It also induces STAT1, STAT3, STAT4 and STAT5 phosphorylation and activates TBX21/T-Bet via STAT1 with resulting IL12RB2 up-regulation, an event crucial to TH1 cell commitment. It suppresses the expression of GATA3, the inhibitor TH1 cells development. In CD8 T-cells, it activates STATs as well as GZMB. IL-27 reveals to be a potent inhibitor of TH17 cell development and of IL-17 production. Indeed IL27 alone is also able to inhibit the production of IL17 by CD4 and CD8 T-cells. While IL-27 suppressed the development of pro-inflammatory Th17 cells via STAT1, it inhibits the development of anti-inflammatory inducible regulatory T-cells, iTreg, independently of STAT1. IL-27 has also an effect on cytokine production, it suppresses pro-inflammatory cytokine production such as IL2, IL4, IL5 and IL6 and activates suppressors of cytokine signaling such as SOCS1 and SOCS3. Apart from suppression of cytokine production, IL-27 also antagonizes the effects of some cytokines such as IL6 through direct effects on T-cells. Another important role of IL-27 is its antitumor activity as well as its antiangiogenic activity with activation of production of antiangiogenic chemokines such as IP- 10/CXCL10 and MIG/CXCL9. In vein endothelial cells, it induces IRF1/interferon regulatory factor 1 and increase the expression of MHC class II transactivator/CIITA with resulting up-regulation of major histocompatibility complex class II. IL-27 also demonstrates antiviral activity with inhibitory properties on HIV-1 replication.

**Cellular Location**

Secreted. Note=Does not seem to be secreted without coexpression of EBI3

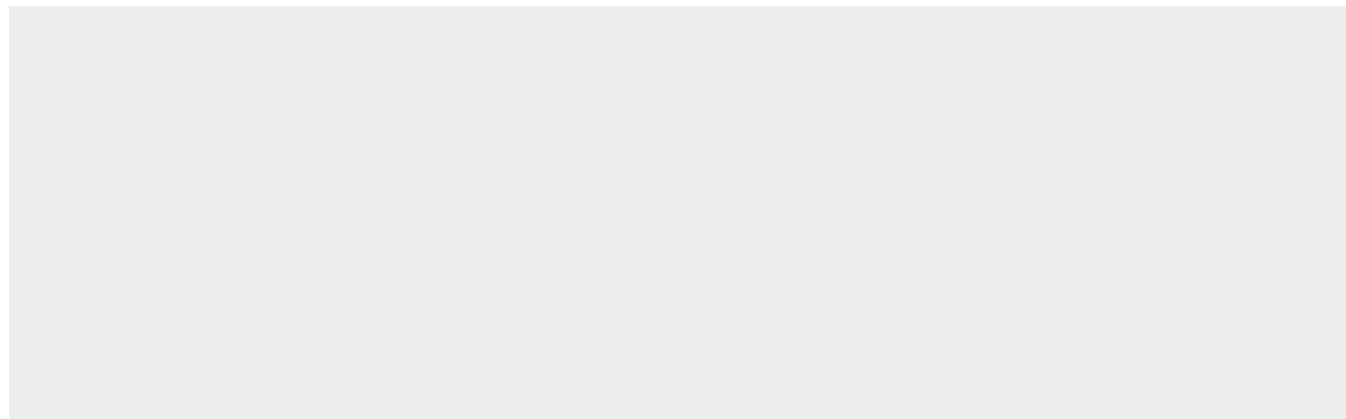
**Tissue Location**

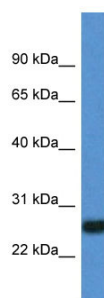
Expressed in monocytes and in placenta.

**IL27 antibody - C-terminal region - Protocols**

Provided below are standard protocols that you may find useful for product applications.

- [Western Blot](#)
- [Blocking Peptides](#)
- [Dot Blot](#)
- [Immunohistochemistry](#)
- [Immunofluorescence](#)
- [Immunoprecipitation](#)
- [Flow Cytometry](#)
- [Cell Culture](#)

**IL27 antibody - C-terminal region - Images**



WB Suggested Anti-IL27 Antibody Titration: 1.0 µg/ml

Positive Control: Fetal Lung

#### **IL27 antibody - C-terminal region - References**

Pflanz S.,et al.Immunity 16:779-790(2002).

Livingston R.J.,et al.Submitted (OCT-2006) to the EMBL/GenBank/DDBJ databases.

Mural R.J.,et al.Submitted (JUL-2005) to the EMBL/GenBank/DDBJ databases.

Hibbert L.,et al.J. Interferon Cytokine Res. 23:513-522(2003).

Fakruddin J.M.,et al.Blood 109:1841-1849(2007).