

XRCC3 antibody - C-terminal region
Rabbit Polyclonal Antibody
Catalog # AI14646**Specification**

XRCC3 antibody - C-terminal region - Product Information

Application	WB
Primary Accession	O43542
Other Accession	NM_005432 , NP_005423
Reactivity	Human, Rabbit, Dog
Predicted	Human, Rabbit, Dog
Host	Rabbit
Clonality	Polyclonal
Calculated MW	38kDa KDa

XRCC3 antibody - C-terminal region - Additional Information**Gene ID** 7517

Alias Symbol	CMM6
Other Names	
DNA repair protein XRCC3, X-ray repair cross-complementing protein 3, XRCC3	

Format

Liquid. Purified antibody supplied in 1x PBS buffer with 0.09% (w/v) sodium azide and 2% sucrose.

Reconstitution & Storage

Add 50 ul of distilled water. Final anti-XRCC3 antibody concentration is 1 mg/ml in PBS buffer with 2% sucrose. For longer periods of storage, store at 20°C. Avoid repeat freeze-thaw cycles.

Precautions

XRCC3 antibody - C-terminal region is for research use only and not for use in diagnostic or therapeutic procedures.

XRCC3 antibody - C-terminal region - Protein Information**Name** XRCC3**Function**

Involved in the homologous recombination repair (HRR) pathway of double-stranded DNA, thought to repair chromosomal fragmentation, translocations and deletions. Part of the RAD51 paralog protein complex CX3 which acts in the BRCA1-BRCA2-dependent HR pathway. Upon DNA damage, CX3 acts downstream of RAD51 recruitment; the complex binds predominantly to the intersection of the four duplex arms of the Holliday junction (HJ) and to junctions of replication forks. Involved in HJ resolution and thus in processing HR intermediates late in the DNA repair process; the function may be linked to the CX3 complex and seems to involve GEN1 during mitotic cell cycle progression. Part of a PALB2-scaffolded HR complex containing BRCA2 and RAD51C and which is thought to play a role in DNA repair by HR. Plays a role in regulating mitochondrial DNA copy

number under conditions of oxidative stress in the presence of RAD51 and RAD51C.

Cellular Location

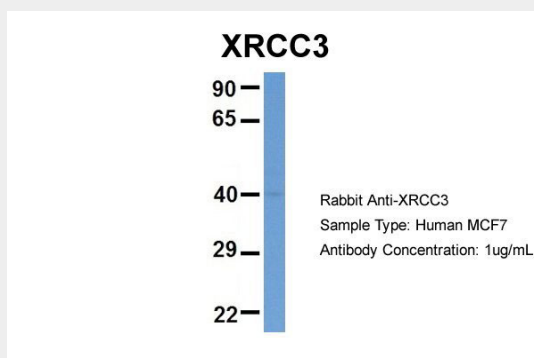
Nucleus. Cytoplasm. Cytoplasm, perinuclear region. Mitochondrion. Note=Accumulates in discrete nuclear foci prior to DNA damage, and these foci persist throughout the time course of DNA repair

XRCC3 antibody - C-terminal region - Protocols

Provided below are standard protocols that you may find useful for product applications.

- [Western Blot](#)
- [Blocking Peptides](#)
- [Dot Blot](#)
- [Immunohistochemistry](#)
- [Immunofluorescence](#)
- [Immunoprecipitation](#)
- [Flow Cytometry](#)
- [Cell Culture](#)

XRCC3 antibody - C-terminal region - Images



Host:Rabbit

Target Name:XRCC3

Sample Tissue:Human MCF7

Antibody Dilution: 1.0µg/mlXRCC3 is supported by BioGPS gene expression data to be expressed in MCF7

XRCC3 antibody - C-terminal region - References

- Liu N.,et al.Mol. Cell 1:783-793(1998).
Masson J.Y.,et al.Genes Dev. 15:3296-3307(2001).
Kuschel B.,et al.Hum. Mol. Genet. 11:1399-1407(2002).
Miller K.A.,et al.J. Biol. Chem. 277:8406-8411(2002).
Liu N.,et al.Nucleic Acids Res. 30:1009-1015(2002).