

CD68 antibody - N-terminal region
Rabbit Polyclonal Antibody
Catalog # AI14906**Specification**

CD68 antibody - N-terminal region - Product Information

Application	WB
Primary Accession	P34810
Other Accession	NM_001251 , NP_001242
Reactivity	Human, Horse, Bovine
Predicted	Human, Horse, Bovine
Host	Rabbit
Clonality	Polyclonal
Calculated MW	39kDa KDa

CD68 antibody - N-terminal region - Additional Information**Gene ID 968**

Alias Symbol	DKFZp686M18236, GP110, SCARD1, LAMP4
Other Names	
Macrosialin, Gp110, CD68, CD68	

Format

Liquid. Purified antibody supplied in 1x PBS buffer with 0.09% (w/v) sodium azide and 2% sucrose.

Reconstitution & Storage

Add 50 ul of distilled water. Final anti-CD68 antibody concentration is 1 mg/ml in PBS buffer with 2% sucrose. For longer periods of storage, store at 20°C. Avoid repeat freeze-thaw cycles.

Precautions

CD68 antibody - N-terminal region is for research use only and not for use in diagnostic or therapeutic procedures.

CD68 antibody - N-terminal region - Protein Information**Name CD68****Function**

Could play a role in phagocytic activities of tissue macrophages, both in intracellular lysosomal metabolism and extracellular cell-cell and cell-pathogen interactions. Binds to tissue- and organ-specific lectins or selectins, allowing homing of macrophage subsets to particular sites. Rapid recirculation of CD68 from endosomes and lysosomes to the plasma membrane may allow macrophages to crawl over selectin-bearing substrates or other cells.

Cellular Location

[Isoform Short]: Cell membrane; Single-pass type I membrane protein

Tissue Location

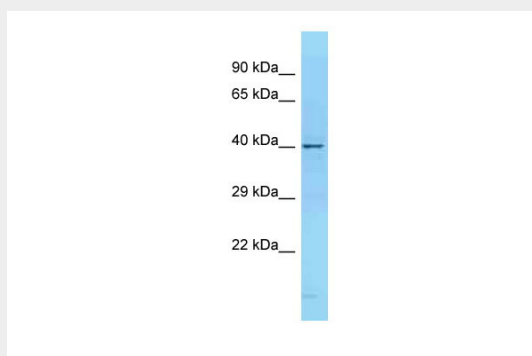
Highly expressed by blood monocytes and tissue macrophages. Also expressed in lymphocytes, fibroblasts and endothelial cells. Expressed in many tumor cell lines which could allow them to attach to selectins on vascular endothelium, facilitating their dissemination to secondary sites.

CD68 antibody - N-terminal region - Protocols

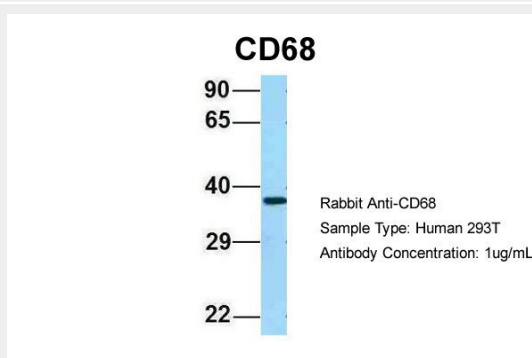
Provided below are standard protocols that you may find useful for product applications.

- [Western Blot](#)
- [Blocking Peptides](#)
- [Dot Blot](#)
- [Immunohistochemistry](#)
- [Immunofluorescence](#)
- [Immunoprecipitation](#)
- [Flow Cytometry](#)
- [Cell Culture](#)

CD68 antibody - N-terminal region - Images



WB Suggested Anti-CD68 Antibody Titration: 1.0 µg/ml
Positive Control: NCI-H226 Whole Cell



Host: Rabbit
Target Name: CD68
Sample Tissue: Human 293T
Antibody Dilution: 1.0 µg/ml

CD68 antibody - N-terminal region - References

Holness C.L., et al. Blood 81:1607-1613(1993).

Kalnina N., et al. Submitted (JUL-2003) to the EMBL/GenBank/DDBJ databases.
Ota T., et al. Nat. Genet. 36:40-45(2004).
Suzuki Y., et al. Submitted (APR-2005) to the EMBL/GenBank/DDBJ databases.
Zody M.C., et al. Nature 440:1045-1049(2006).