

**Rap1a Antibody - C-terminal region**  
**Rabbit Polyclonal Antibody**  
**Catalog # AI14958****Specification**

---

**Rap1a Antibody - C-terminal region - Product Information**

Application	WB
Primary Accession	<a href="#">P62835</a>
Other Accession	<a href="#">NM_145541</a> , <a href="#">NP_663516</a>
Reactivity	Human, Mouse, Rat, Rabbit, Pig, Goat, Horse, Bovine, Guinea Pig, Dog
Predicted	Human, Mouse, Rat, Rabbit, Pig, Goat, Horse, Bovine, Guinea Pig, Dog
Host	Rabbit
Clonality	Polyclonal
Calculated MW	20kDa KDa

**Rap1a Antibody - C-terminal region - Additional Information****Gene ID** 109905**Alias Symbol** AI848598, G-22K, Krev-1, Rap1**Other Names**

Ras-related protein Rap-1A, Ras-related protein Krev-1, Rap1a, Krev-1

**Format**

Liquid. Purified antibody supplied in 1x PBS buffer with 0.09% (w/v) sodium azide and 2% sucrose.

**Reconstitution & Storage**

Add 50 ul of distilled water. Final anti-Rap1a antibody concentration is 1 mg/ml in PBS buffer with 2% sucrose. For longer periods of storage, store at 20°C. Avoid repeat freeze-thaw cycles.

**Precautions**

Rap1a Antibody - C-terminal region is for research use only and not for use in diagnostic or therapeutic procedures.

**Rap1a Antibody - C-terminal region - Protein Information****Name** Rap1a**Synonyms** Krev-1**Function**

Induces morphological reversion of a cell line transformed by a Ras oncogene. Counteracts the mitogenic function of Ras, at least partly because it can interact with Ras GAPs and RAF in a competitive manner. Together with ITGB1BP1, regulates KRIT1 localization to microtubules and membranes (By similarity). Plays a role in nerve growth factor (NGF)-induced neurite outgrowth. Plays a role in the regulation of embryonic blood vessel formation. Involved in the establishment of

basal endothelial barrier function. May be involved in the regulation of the vascular endothelial growth factor receptor KDR expression at endothelial cell-cell junctions.

#### Cellular Location

Cell membrane; Lipid-anchor. Cell junction. Cytoplasm. Cytoplasm, perinuclear region. Early endosome. Late endosome. Note=Recruited from early endosome to late endosome compartment after nerve growth factor (NGF) stimulation. Colocalized with RAPGEF2 in the perinuclear region (By similarity). Localized with RAPGEF2 at cell-cell junctions

#### Tissue Location

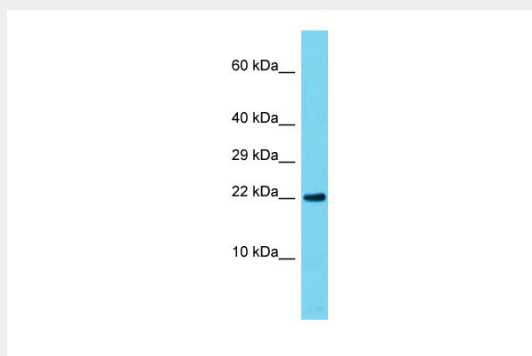
Expressed in the testis and sperm midpiece (at protein level).

### Rap1a Antibody - C-terminal region - Protocols

Provided below are standard protocols that you may find useful for product applications.

- [Western Blot](#)
- [Blocking Peptides](#)
- [Dot Blot](#)
- [Immunohistochemistry](#)
- [Immunofluorescence](#)
- [Immunoprecipitation](#)
- [Flow Cytometry](#)
- [Cell Culture](#)

### Rap1a Antibody - C-terminal region - Images



Host: Rabbit  
Target Name: Rap1a  
Sample Tissue: Mouse Testis lysates  
Antibody Dilution: 1.0µg/ml

### Rap1a Antibody - C-terminal region - References

Kanemura H., et al. Biochem. Biophys. Res. Commun. 387:754-759(2009).