

CILP antibody - C-terminal region
Rabbit Polyclonal Antibody
Catalog # AI15140**Specification**

CILP antibody - C-terminal region - Product Information

Application	WB
Primary Accession	O75339
Other Accession	NM_003613 , NP_003604
Reactivity	Human, Mouse, Rat, Rabbit, Pig, Horse, Bovine, Dog
Predicted	Human, Mouse, Rat, Rabbit, Pig, Horse, Bovine, Dog
Host	Rabbit
Clonality	Polyclonal
Calculated MW	52kDa kDa

CILP antibody - C-terminal region - Additional Information**Gene ID** 8483**Alias Symbol** CILP-1, HsT18872**Other Names**

Cartilage intermediate layer protein 1, CILP-1, Cartilage intermediate-layer protein, Cartilage intermediate layer protein 1 C1, Cartilage intermediate layer protein 1 C2, CILP

Format

Liquid. Purified antibody supplied in 1x PBS buffer with 0.09% (w/v) sodium azide and 2% sucrose.

Reconstitution & Storage

Add 50 ul of distilled water. Final anti-CILP antibody concentration is 1 mg/ml in PBS buffer with 2% sucrose. For longer periods of storage, store at 20°C. Avoid repeat freeze-thaw cycles.

Precautions

CILP antibody - C-terminal region is for research use only and not for use in diagnostic or therapeutic procedures.

CILP antibody - C-terminal region - Protein Information**Name** CILP**Function**

Probably plays a role in cartilage scaffolding. May act by antagonizing TGF-beta1 (TGFB1) and IGF1 functions. Has the ability to suppress IGF1-induced proliferation and sulfated proteoglycan synthesis, and inhibits ligand-induced IGF1R autophosphorylation. May inhibit TGFB1-mediated induction of cartilage matrix genes via its interaction with TGFB1. Overexpression may lead to impair chondrocyte growth and matrix repair and indirectly promote inorganic pyrophosphate (PPi) supersaturation in aging and osteoarthritis cartilage.

Cellular Location

Secreted, extracellular space, extracellular matrix

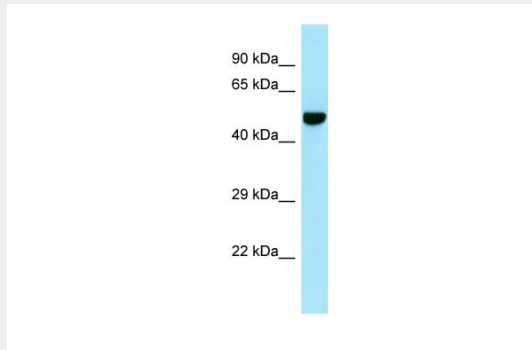
Tissue Location

Specifically expressed in cartilage. Localizes in the intermediates layer of articular cartilage but neither in the superficial nor in the deepest regions. Specifically and highly expressed in intervertebral disk tissue. Expression increases with aging in hip articular cartilage. Overexpressed in articular hyaline cartilage from patients with calcium pyrophosphate dihydrate crystal deposition disease (CPPD). Expression in intervertebral disk tissue from individuals with lumbar disk disease increases as disk degeneration progresses.

CILP antibody - C-terminal region - Protocols

Provided below are standard protocols that you may find useful for product applications.

- [Western Blot](#)
- [Blocking Peptides](#)
- [Dot Blot](#)
- [Immunohistochemistry](#)
- [Immunofluorescence](#)
- [Immunoprecipitation](#)
- [Flow Cytometry](#)
- [Cell Culture](#)

CILP antibody - C-terminal region - Images

WB Suggested Anti-CILP Antibody Titration: 1.0 µg/ml

Positive Control: 721_B Whole Cell

CILP antibody - C-terminal region - References

Lorenzo P., et al. J. Biol. Chem. 273:23469-23475(1998).
Nakamura I., et al. J. Hum. Genet. 44:203-205(1999).
Lorenzo P., et al. Matrix Biol. 18:445-454(1999).
Clark H.F., et al. Genome Res. 13:2265-2270(2003).
Ota T., et al. Nat. Genet. 36:40-45(2004).