

CD96 antibody - C-terminal region
Rabbit Polyclonal Antibody
Catalog # AI15161**Specification**

CD96 antibody - C-terminal region - Product Information

| | |
|-------------------|---|
| Application | WB |
| Primary Accession | P40200 |
| Other Accession | NM_198196 , NP_937839 |
| Reactivity | Human, Guinea Pig |
| Predicted | Human, Pig, Guinea Pig |
| Host | Rabbit |
| Clonality | Polyclonal |
| Calculated MW | 63kDa KDa |

CD96 antibody - C-terminal region - Additional Information**Gene ID** 10225**Alias Symbol** **DKFZp667E2122, MGC22596, TACTILE**
Other Names

T-cell surface protein tactile, Cell surface antigen CD96, T cell-activated increased late expression protein, CD96, CD96

Format

Liquid. Purified antibody supplied in 1x PBS buffer with 0.09% (w/v) sodium azide and 2% sucrose.

Reconstitution & Storage

Add 50 ul of distilled water. Final anti-CD96 antibody concentration is 1 mg/ml in PBS buffer with 2% sucrose. For longer periods of storage, store at 20°C. Avoid repeat freeze-thaw cycles.

Precautions

CD96 antibody - C-terminal region is for research use only and not for use in diagnostic or therapeutic procedures.

CD96 antibody - C-terminal region - Protein Information**Name** CD96**Function**

May be involved in adhesive interactions of activated T and NK cells during the late phase of the immune response. Promotes NK cell-target adhesion by interacting with PVR present on target cells. May function at a time after T and NK cells have penetrated the endothelium using integrins and selectins, when they are actively engaging diseased cells and moving within areas of inflammation.

Cellular Location

Membrane; Single-pass type I membrane protein.

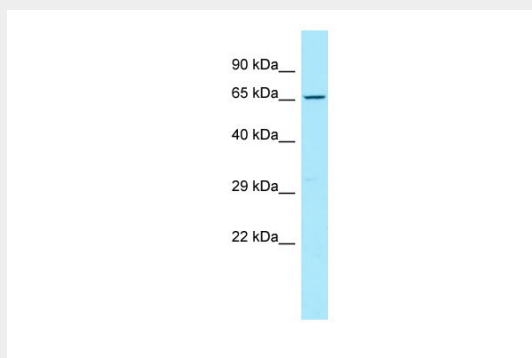
Tissue Location

Expressed on normal T-cell lines and clones, and some transformed T-cells, but no other cultured cell lines tested. It is expressed at very low levels on activated B-cells

CD96 antibody - C-terminal region - Protocols

Provided below are standard protocols that you may find useful for product applications.

- [Western Blot](#)
- [Blocking Peptides](#)
- [Dot Blot](#)
- [Immunohistochemistry](#)
- [Immunofluorescence](#)
- [Immunoprecipitation](#)
- [Flow Cytometry](#)
- [Cell Culture](#)

CD96 antibody - C-terminal region - Images

WB Suggested Anti-CD96 Antibody Titration: 1.0 µg/ml

Positive Control: Hela Whole Cell

CD96 antibody - C-terminal region - References

- Wang P.L., et al. J. Immunol. 148:2600-2608(1992).
Bechtel S., et al. BMC Genomics 8:399-399(2007).
Mural R.J., et al. Submitted (SEP-2005) to the EMBL/GenBank/DDBJ databases.
Fuchs A., et al. J. Immunol. 172:3994-3998(2004).
Wollscheid B., et al. Nat. Biotechnol. 27:378-386(2009).