

**LAIR1 Antibody - middle region**  
**Rabbit Polyclonal Antibody**  
**Catalog # AI15301****Specification**

---

**LAIR1 Antibody - middle region - Product Information**

Application	WB
Primary Accession	<a href="#">Q6GTX8</a>
Other Accession	<a href="#">NM_021706</a> , <a href="#">NP_068352</a>
Reactivity	Human
Predicted	Human
Host	Rabbit
Clonality	Polyclonal
Calculated MW	30kDa KDa

**LAIR1 Antibody - middle region - Additional Information****Gene ID** 3903**Alias Symbol** CD305, LAIR-1**Other Names**

Leukocyte-associated immunoglobulin-like receptor 1, LAIR-1, hLAIR1, CD305, LAIR1, CD305

**Format**

Liquid. Purified antibody supplied in 1x PBS buffer with 0.09% (w/v) sodium azide and 2% sucrose.

**Reconstitution & Storage**

Add 50 ul of distilled water. Final anti-LAIR1 antibody concentration is 1 mg/ml in PBS buffer with 2% sucrose. For longer periods of storage, store at 20°C. Avoid repeat freeze-thaw cycles.

**Precautions**

LAIR1 Antibody - middle region is for research use only and not for use in diagnostic or therapeutic procedures.

**LAIR1 Antibody - middle region - Protein Information****Name** LAIR1**Synonyms** CD305**Function**

Functions as an inhibitory receptor that plays a constitutive negative regulatory role on cytolytic function of natural killer (NK) cells, B-cells and T-cells. Activation by Tyr phosphorylation results in recruitment and activation of the phosphatases PTPN6 and PTPN11. It also reduces the increase of intracellular calcium evoked by B-cell receptor ligation. May also play its inhibitory role independently of SH2-containing phosphatases. Modulates cytokine production in CD4+ T- cells, down-regulating IL2 and IFNG production while inducing secretion of transforming growth factor beta. Down-regulates also IgG and IgE production in B-cells as well as IL8, IL10 and TNF secretion.

Inhibits proliferation and induces apoptosis in myeloid leukemia cell lines as well as prevents nuclear translocation of NF-kappa-B p65 subunit/RELA and phosphorylation of I-kappa-B alpha/CHUK in these cells. Inhibits the differentiation of peripheral blood precursors towards dendritic cells.

**Cellular Location**

Cell membrane; Single-pass type I membrane protein

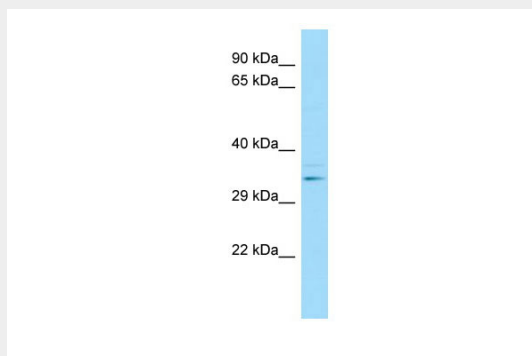
**Tissue Location**

Expressed on the majority of peripheral mononuclear cells, including natural killer (NK) cells, T-cells, B-cells, monocytes, and dendritic cells. Highly expressed in naive T-cells and B-cells but no expression on germinal center B-cells. Abnormally low expression in naive B-cells from HIV-1 infected patients. Very low expression in NK cells from a patient with chronic active Epstein-Barr virus infection.

**LAIR1 Antibody - middle region - Protocols**

Provided below are standard protocols that you may find useful for product applications.

- [Western Blot](#)
- [Blocking Peptides](#)
- [Dot Blot](#)
- [Immunohistochemistry](#)
- [Immunofluorescence](#)
- [Immunoprecipitation](#)
- [Flow Cytometry](#)
- [Cell Culture](#)

**LAIR1 Antibody - middle region - Images**

WB Suggested Anti-LAIR1 Antibody Titration: 1.0 µg/ml  
Positive Control: Fetal Liver

**LAIR1 Antibody - middle region - References**

Meyaard L., et al. Immunity 7:283-290(1997).  
Meyaard L., et al. J. Immunol. 162:5800-5804(1999).  
Xu M.-J., et al. J. Biol. Chem. 275:17440-17446(2000).  
Halleck A., et al. Submitted (JUN-2004) to the EMBL/GenBank/DBJ databases.  
Poggi A., et al. Eur. J. Immunol. 28:2086-2091(1998).