

**Spaca3 Antibody - C-terminal region**  
**Rabbit Polyclonal Antibody**  
**Catalog # AI15352****Specification**

---

**Spaca3 Antibody - C-terminal region - Product Information**

Application	WB
Primary Accession	<a href="#">Q9D9X8</a>
Reactivity	Human, Mouse, Rat, Rabbit, Pig, Goat, Sheep, Horse, Bovine, Dog
Predicted	Human, Mouse, Rat, Rabbit, Pig, Goat, Sheep, Horse, Bovine, Dog
Host	Rabbit
Clonality	Polyclonal
Calculated MW	24kDa KDa

**Spaca3 Antibody - C-terminal region - Additional Information****Gene ID** 75622**Other Names**

Sperm acrosome membrane-associated protein 3, Lysozyme-like protein 3, Sperm lysozyme-like protein 1, mSLLP1, Sperm acrosome membrane-associated protein 3, membrane form, Sperm acrosome membrane-associated protein 3, processed form, Spaca3, Lyc3, Lyzl3, Sllp1

**Format**

Liquid. Purified antibody supplied in 1x PBS buffer with 0.09% (w/v) sodium azide and 2% sucrose.

**Reconstitution & Storage**

Add 50 ul of distilled water. Final anti-Spaca3 antibody concentration is 1 mg/ml in PBS buffer with 2% sucrose. For longer periods of storage, store at 20°C. Avoid repeat freeze-thaw cycles.

**Precautions**

Spaca3 Antibody - C-terminal region is for research use only and not for use in diagnostic or therapeutic procedures.

**Spaca3 Antibody - C-terminal region - Protein Information****Name** Spaca3**Synonyms** Lyc3, Lyzl3, Sllp1**Function**

Sperm surface membrane protein that may be involved in sperm- egg plasma membrane adhesion and fusion during fertilization. It could be a potential receptor for the egg oligosaccharide residue N- acetylglucosamine, which is present in the extracellular matrix over the egg plasma membrane. The processed form has no detectable bacteriolytic activity in vitro (By similarity).

**Cellular Location**

Cytoplasmic vesicle, secretory vesicle, acrosome membrane; Single-pass type II membrane protein. Note=Anterior acrosome in non- capacitated spermatozoa and retained in the equatorial segment and in the luminal face of both the inner and outer acrosomal membranes following capacitation and the acrosome reaction

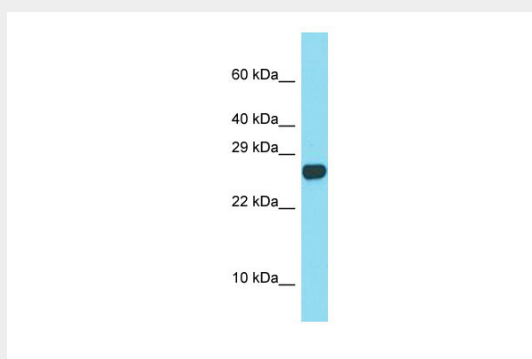
**Tissue Location**

The processed form is expressed in sperm (at protein level). Expressed strongly in testis and epididymis and weakly in pancreas.

**Spaca3 Antibody - C-terminal region - Protocols**

Provided below are standard protocols that you may find useful for product applications.

- [Western Blot](#)
- [Blocking Peptides](#)
- [Dot Blot](#)
- [Immunohistochemistry](#)
- [Immunofluorescence](#)
- [Immunoprecipitation](#)
- [Flow Cytometry](#)
- [Cell Culture](#)

**Spaca3 Antibody - C-terminal region - Images**

Host: Rabbit

Target Name: Spaca3

Sample Tissue: Mouse Spleen lysates

Antibody Dilution: 1.0µg/ml

**Spaca3 Antibody - C-terminal region - References**

Zhang K.,et al.Biol. Reprod. 73:1064-1071(2005).  
Carninci P.,et al.Science 309:1559-1563(2005).  
Church D.M.,et al.PLoS Biol. 7:E1000112-E1000112(2009).  
Herrero M.B.,et al.Dev. Biol. 284:126-142(2005).  
Sachdev M.,et al.Dev. Biol. 363:40-51(2012).