

NENF Antibody - N-terminal region
Rabbit Polyclonal Antibody
Catalog # AI15447**Specification**

NENF Antibody - N-terminal region - Product Information

| | |
|-------------------|---|
| Application | WB |
| Primary Accession | O9UMX5 |
| Other Accession | NM_013349 , NP_037481 |
| Reactivity | Human, Mouse, Rat, Rabbit, Pig, Bovine, Guinea Pig, Dog |
| Predicted | Human, Mouse, Rat, Rabbit, Pig, Bovine, Guinea Pig, Dog |
| Host | Rabbit |
| Clonality | Polyclonal |
| Calculated MW | 15kDa kDa |

NENF Antibody - N-terminal region - Additional Information**Gene ID** 29937**Alias Symbol** CIR2, SCIRP10, SPUF**Other Names**

Neudesin, Cell immortalization-related protein 2, Neuron-derived neurotrophic factor, Secreted protein of unknown function, SPUF protein, NENF, CIR2, SPUF

Format

Liquid. Purified antibody supplied in 1x PBS buffer with 0.09% (w/v) sodium azide and 2% sucrose.

Reconstitution & Storage

Add 50 ul of distilled water. Final anti-NENF antibody concentration is 1 mg/ml in PBS buffer with 2% sucrose. For longer periods of storage, store at 20°C. Avoid repeat freeze-thaw cycles.

Precautions

NENF Antibody - N-terminal region is for research use only and not for use in diagnostic or therapeutic procedures.

NENF Antibody - N-terminal region - Protein Information**Name** NENF ([HGNC:30384](#))**Synonyms** CIR2, SPUF**Function**

Acts as a neurotrophic factor in postnatal mature neurons enhancing neuronal survival (PubMed:31536960). Promotes cell proliferation and neurogenesis in undifferentiated neural progenitor cells at the embryonic stage and inhibits differentiation of astrocytes (By similarity). Its neurotrophic activity is

exerted via MAPK1/ERK2, MAPK3/ERK1 and AKT1/AKT pathways (By similarity). Neurotrophic activity is enhanced by binding to heme (By similarity). Acts also as an anorexigenic neurotrophic factor that contributes to energy balance (By similarity).

Cellular Location

Secreted, extracellular space. Mitochondrion. Endoplasmic reticulum. Note=Localized to mitochondria and endoplasmic reticulum by PINK1 and PARK7

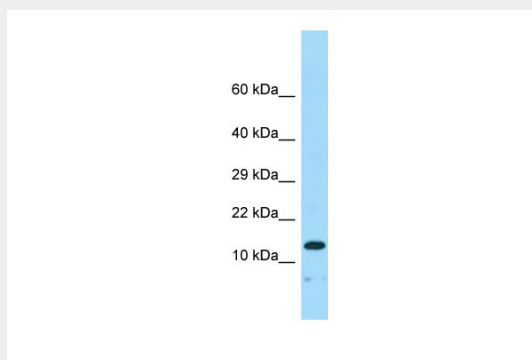
Tissue Location

Ubiquitously expressed with high expression in heart. Over-expressed in various tumors including carcinomas of the uterine cervix, lymphoma, colon, lung, skin and leukemia, as well as carcinoma of the breast.

NENF Antibody - N-terminal region - Protocols

Provided below are standard protocols that you may find useful for product applications.

- [Western Blot](#)
- [Blocking Peptides](#)
- [Dot Blot](#)
- [Immunohistochemistry](#)
- [Immunofluorescence](#)
- [Immunoprecipitation](#)
- [Flow Cytometry](#)
- [Cell Culture](#)

NENF Antibody - N-terminal region - Images

Host: Rabbit
Target Name: NENF
Sample Tissue: Fetal Heart lysates
Antibody Dilution: 1.0µg/ml

NENF Antibody - N-terminal region - References

Kimura I.,et al.J. Neurosci. Res. 79:287-294(2005).
Rasheed Z.A.,et al.Submitted (JUL-1999) to the EMBL/GenBank/DDBJ databases.
Kim J.W.,et al.Submitted (SEP-2004) to the EMBL/GenBank/DDBJ databases.
Suzuki Y.,et al.Submitted (APR-2005) to the EMBL/GenBank/DDBJ databases.
Mural R.J.,et al.Submitted (SEP-2005) to the EMBL/GenBank/DDBJ databases.