

**PRSS33 Antibody - C-terminal region**  
**Rabbit Polyclonal Antibody**  
**Catalog # AI15530****Specification**

---

**PRSS33 Antibody - C-terminal region - Product Information**

Application	WB
Primary Accession	<a href="#">Q8NF86</a>
Other Accession	<a href="#">NM_152891</a> , <a href="#">NP_690851</a>
Reactivity	Human, Mouse, Rat, Rabbit, Horse, Bovine, Guinea Pig, Dog
Predicted	Human, Mouse, Rat, Rabbit, Pig, Horse, Bovine, Guinea Pig, Dog
Host	Rabbit
Clonality	Polyclonal
Calculated MW	31kDa kDa

**PRSS33 Antibody - C-terminal region - Additional Information****Gene ID** 260429

Alias Symbol	EOS
<b>Other Names</b>	
Serine protease 33, 3.4.21.-, Serine protease EOS, PRSS33	

**Format**

Liquid. Purified antibody supplied in 1x PBS buffer with 0.09% (w/v) sodium azide and 2% sucrose.

**Reconstitution & Storage**

Add 50 ul of distilled water. Final anti-PRSS33 antibody concentration is 1 mg/ml in PBS buffer with 2% sucrose. For longer periods of storage, store at 20°C. Avoid repeat freeze-thaw cycles.

**Precautions**

PRSS33 Antibody - C-terminal region is for research use only and not for use in diagnostic or therapeutic procedures.

**PRSS33 Antibody - C-terminal region - Protein Information****Name** PRSS33**Function**

Serine protease that has amidolytic activity, cleaving its substrates before Arg residues.

**Cellular Location**

Secreted.

**Tissue Location**

Predominantly expressed in macrophages. Present in the spleen, small and large intestine, lung

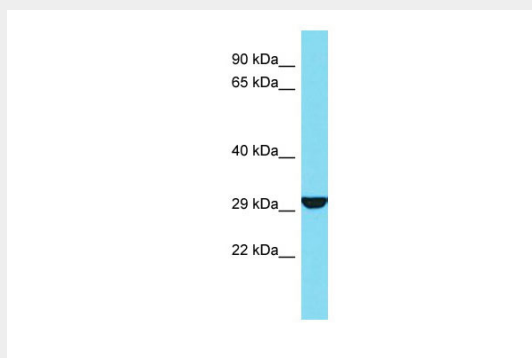
and brain (at protein level). Highly expressed in peripheral leukocytes, ovary, retina, spleen and stomach. Moderately expressed in thymus, uterus and platelets, as well as some brain tissues, such as thalamus and fetal brain.

### **PRSS33 Antibody - C-terminal region - Protocols**

Provided below are standard protocols that you may find useful for product applications.

- [Western Blot](#)
- [Blocking Peptides](#)
- [Dot Blot](#)
- [Immunohistochemistry](#)
- [Immunofluorescence](#)
- [Immunoprecipitation](#)
- [Flow Cytometry](#)
- [Cell Culture](#)

### **PRSS33 Antibody - C-terminal region - Images**



Host: Rabbit

Target Name: PRSS33

Sample Tissue: 721\_B Whole cell lysate

s

Antibody Dilution: 1.0µg/ml