

**C1QL3 Antibody - middle region**  
**Rabbit Polyclonal Antibody**  
**Catalog # AI15561****Specification**

---

**C1QL3 Antibody - middle region - Product Information**

Application	WB
Primary Accession	<a href="#">Q5VWW1</a>
Other Accession	<a href="#">NP_001010908</a>
Reactivity	Human
Host	Rabbit
Clonality	Polyclonal
Calculated MW	28kDa KDa

**C1QL3 Antibody - middle region - Additional Information****Gene ID** 389941**Alias Symbol** **C1QL3, CTRP13,****Other Names**

Complement C1q-like protein 3, C1q and tumor necrosis factor-related protein 13, C1q/TNF-related protein 13, C1QL3, CTRP13

**Format**

Liquid. Purified antibody supplied in 1x PBS buffer with 0.09% (w/v) sodium azide and 2% sucrose.

**Reconstitution & Storage**

Add 50 µl of distilled water. Final Anti-C1QL3 antibody concentration is 1 mg/ml in PBS buffer with 2% sucrose. For longer periods of storage, store at -20°C. Avoid repeat freeze-thaw cycles.

**Precautions**

C1QL3 Antibody - middle region is for research use only and not for use in diagnostic or therapeutic procedures.

**C1QL3 Antibody - middle region - Protein Information****Name** C1QL3**Synonyms** CTRP13**Function**

May regulate the number of excitatory synapses that are formed on hippocampus neurons. Has no effect on inhibitory synapses (By similarity). Plays a role in glucose homeostasis. Via AMPK signaling pathway, stimulates glucose uptake in adipocytes, myotubes and hepatocytes and enhances insulin-stimulated glucose uptake. In a hepatoma cell line, reduces the expression of gluconeogenic enzymes G6PC1 and PCK1 and hence decreases de novo glucose production (By similarity).

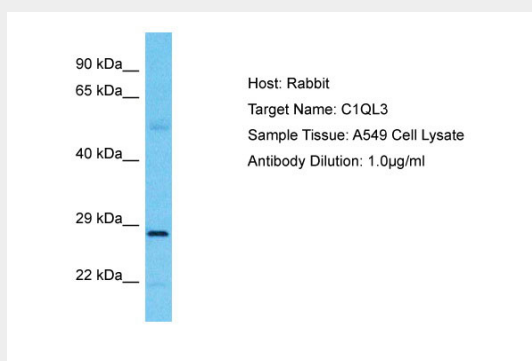
**Cellular Location**  
Secreted.**Tissue Location**

Highly expressed in adipose tissue, with expression levels at least 2 orders of magnitude higher than in other tissues, including brain and kidney.

**C1QL3 Antibody - middle region - Protocols**

Provided below are standard protocols that you may find useful for product applications.

- [Western Blot](#)
- [Blocking Peptides](#)
- [Dot Blot](#)
- [Immunohistochemistry](#)
- [Immunofluorescence](#)
- [Immunoprecipitation](#)
- [Flow Cytometry](#)
- [Cell Culture](#)

**C1QL3 Antibody - middle region - Images**

Host: Rabbit  
Target Name: C1QL3  
Sample Tissue: A549 Whole cell lysate  
s  
Antibody Dilution: 1.0µg/ml

**C1QL3 Antibody - middle region - References**

Deloukas P., et al. Nature 429:375-381(2004).  
Wei Z., et al. J. Biol. Chem. 286:15652-15665(2011).