

MLIP Antibody - middle region
Rabbit Polyclonal Antibody
Catalog # AI15708**Specification**

MLIP Antibody - middle region - Product Information

Application	WB
Primary Accession	Q5VWP3
Other Accession	NM_138569 , NP_612636
Reactivity	Human, Rat, Pig, Horse, Bovine, Dog
Predicted	Human, Rat, Pig, Horse, Bovine, Dog
Host	Rabbit
Clonality	Polyclonal
Calculated MW	50kDa KDa

MLIP Antibody - middle region - Additional Information**Gene ID** 90523**Alias Symbol** **C6orf142****Other Names**

Muscular LMNA-interacting protein, Muscular-enriched A-type laminin-interacting protein, MLIP, C6orf142

Format

Liquid. Purified antibody supplied in 1x PBS buffer with 0.09% (w/v) sodium azide and 2% sucrose.

Reconstitution & Storage

Add 50 ul of distilled water. Final anti-MLIP antibody concentration is 1 mg/ml in PBS buffer with 2% sucrose. For longer periods of storage, store at 20°C. Avoid repeat freeze-thaw cycles.

Precautions

MLIP Antibody - middle region is for research use only and not for use in diagnostic or therapeutic procedures.

MLIP Antibody - middle region - Protein Information**Name** MLIP ([HGNC:21355](#))**Function**

Required for myoblast differentiation into myotubes, possibly acting as a transcriptional regulator of the myogenic program (By similarity). Required for cardiac adaptation to stress through integrated regulation of the AKT/mTOR pathways and FOXO1. Regulates cardiac homeostasis and plays a role in the protection against cardiac hypertrophy (By similarity). Binds chromatin (By similarity). May act as a transcriptional cofactor for ISL1, repressing its transcriptional activity (By similarity). May also repress MYOCD transcriptional activity (By similarity).

Cellular Location

Nucleus. Nucleus envelope {ECO:0000250|UniProtKB:Q5FW52}. Nucleus, PML body {ECO:0000250|UniProtKB:Q5FW52}. Cytoplasm, cytosol. Cell membrane, sarcolemma {ECO:0000250|UniProtKB:Q5FW52}; Peripheral membrane protein {ECO:0000250|UniProtKB:Q5FW52}; Cytoplasmic side {ECO:0000250|UniProtKB:Q5FW52}

Tissue Location

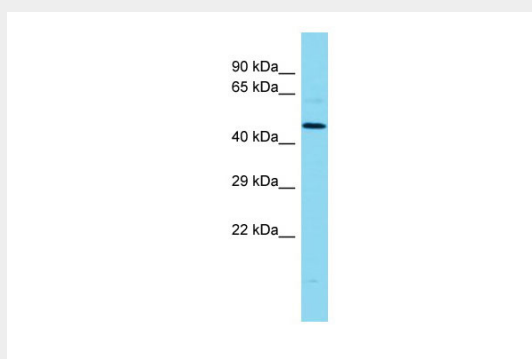
Predominantly expressed in the heart and skeletal muscle (PubMed:21498514, PubMed:26436652, PubMed:34581780). Also detected in liver (PubMed:21498514). [Isoform 3]: Expressed in skeletal muscle.

MLIP Antibody - middle region - Protocols

Provided below are standard protocols that you may find useful for product applications.

- [Western Blot](#)
- [Blocking Peptides](#)
- [Dot Blot](#)
- [Immunohistochemistry](#)
- [Immunofluorescence](#)
- [Immunoprecipitation](#)
- [Flow Cytometry](#)
- [Cell Culture](#)

MLIP Antibody - middle region - Images



Host: Rabbit
Target Name: MLIP
Sample Tissue: MCF7 Whole cell lysate
s
Antibody Dilution: 1.0µg/ml

MLIP Antibody - middle region - References

Ota T., et al. Nat. Genet. 36:40-45(2004).
Mungall A.J., et al. Nature 425:805-811(2003).
Ahmady E., et al. J. Biol. Chem. 286:19702-19713(2011).