

BPIFB3 Antibody - C-terminal region
Rabbit Polyclonal Antibody
Catalog # AI15764**Specification**

BPIFB3 Antibody - C-terminal region - Product Information

Application	WB
Primary Accession	P59826
Other Accession	NM_182658NP_872599
Reactivity	Human, Mouse, Rat, Pig, Horse, Bovine, Guinea Pig, Dog
Predicted	Human, Mouse, Rat, Pig, Horse, Bovine, Guinea Pig, Dog
Host	Rabbit
Clonality	Polyclonal
Calculated MW	48kDa kDa

BPIFB3 Antibody - C-terminal region - Additional Information**Gene ID** 359710**Alias Symbol** C20orf185, LPLUNC3, RYA3, dj726C3.4**Other Names**

BPI fold-containing family B member 3, Ligand-binding protein RYA3, Long palate, lung and nasal epithelium carcinoma-associated protein 3, BPIFB3, C20orf185, LPLUNC3

Format

Liquid. Purified antibody supplied in 1x PBS buffer with 0.09% (w/v) sodium azide and 2% sucrose.

Reconstitution & Storage

Add 50 ul of distilled water. Final anti-BPIFB3 antibody concentration is 1 mg/ml in PBS buffer with 2% sucrose. For longer periods of storage, store at 20°C. Avoid repeat freeze-thaw cycles.

Precautions

BPIFB3 Antibody - C-terminal region is for research use only and not for use in diagnostic or therapeutic procedures.

BPIFB3 Antibody - C-terminal region - Protein Information**Name** BPIFB3 ([HGNC:16178](#))**Synonyms** C20orf185, LPLUNC3**Function**

May have the capacity to recognize and bind specific classes of odorants. May act as a carrier molecule, transporting odorants across the mucus layer to access receptor sites. May serve as a primary defense mechanism by recognizing and removing potentially harmful odorants or pathogenic microorganisms from the mucosa or clearing excess odorant from mucus to enable

new odorant stimuli to be received (By similarity).

Cellular Location

Secreted. Cytoplasm. Note=According to PubMed:12837268, it is cytoplasmic

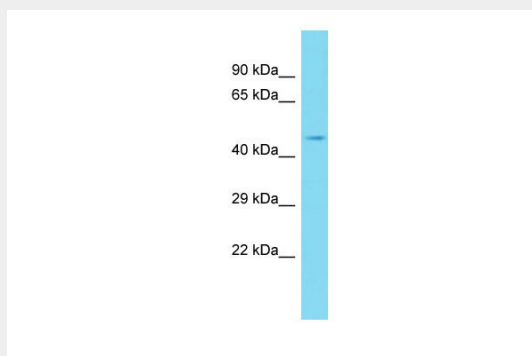
Tissue Location

Detected in nasal septal epithelium.

BPIFB3 Antibody - C-terminal region - Protocols

Provided below are standard protocols that you may find useful for product applications.

- [Western Blot](#)
- [Blocking Peptides](#)
- [Dot Blot](#)
- [Immunohistochemistry](#)
- [Immunofluorescence](#)
- [Immunoprecipitation](#)
- [Flow Cytometry](#)
- [Cell Culture](#)

BPIFB3 Antibody - C-terminal region - Images

Host: Rabbit

Target Name: BPIFB3

Sample Tissue: Fetal Liver lysates

Antibody Dilution: 1.0µg/ml

BPIFB3 Antibody - C-terminal region - Background

May have the capacity to recognize and bind specific classes of odorants. May act as a carrier molecule, transporting odorants across the mucus layer to access receptor sites. May serve as a primary defense mechanism by recognizing and removing potentially harmful odorants or pathogenic microorganisms from the mucosa or clearing excess odorant from mucus to enable new odorant stimuli to be received (By similarity).

BPIFB3 Antibody - C-terminal region - References

Andrault J.-B., et al. Genomics 82:172-184(2003).
Deloukas P., et al. Nature 414:865-871(2001).
Bingle C.D., et al. Hum. Mol. Genet. 11:937-943(2002).