

KRT78 Antibody - middle region
Rabbit Polyclonal Antibody
Catalog # AI15870**Specification**

KRT78 Antibody - middle region - Product Information

Application	WB
Primary Accession	Q8N1N4
Other Accession	NM_173352 , NP_775487
Reactivity	Human, Mouse, Rat, Rabbit, Pig, Bovine, Guinea Pig, Dog
Predicted	Human, Mouse, Rat, Rabbit, Pig, Bovine, Guinea Pig, Dog
Host	Rabbit
Clonality	Polyclonal
Calculated MW	57kDa kDa

KRT78 Antibody - middle region - Additional Information**Gene ID** 196374**Alias Symbol** K5B, Kb40**Other Names**

Keratin, type II cytoskeletal 78, Cytokeratin-78, CK-78, Keratin-5b, Keratin-78, K78, Type-II keratin Kb40, KRT78, K5B, KB40

Format

Liquid. Purified antibody supplied in 1x PBS buffer with 0.09% (w/v) sodium azide and 2% sucrose.

Reconstitution & Storage

Add 50 ul of distilled water. Final anti-KRT78 antibody concentration is 1 mg/ml in PBS buffer with 2% sucrose. For longer periods of storage, store at 20°C. Avoid repeat freeze-thaw cycles.

Precautions

KRT78 Antibody - middle region is for research use only and not for use in diagnostic or therapeutic procedures.

KRT78 Antibody - middle region - Protein Information**Name** KRT78**Synonyms** K5B, KB40**Tissue Location**

In non-keratinising esophageal and vaginal epithelium, strongly expressed in the basal and parabasal/lower suprabasal cell layers with considerably decreased expression in the mid/upper suprabasal layers (at protein level) (PubMed:26340985). A similar gradient from basal to lower suprabasal layers is seen in the partially keratinised dorsal tongue epithelium, in the scalp and in

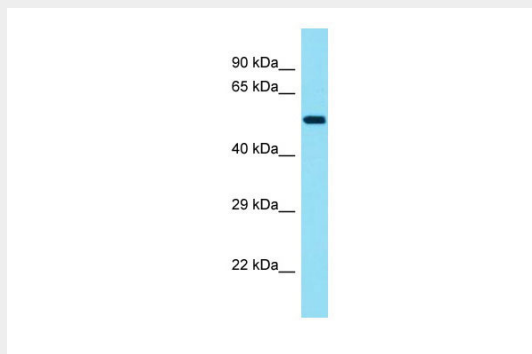
the plantar epidermis (at protein level) (PubMed:26340985). Extension of expression into the suprabasal compartments is distinctly more pronounced in non-keratinising epithelia than in keratinising epithelia and epidermis (at protein level) (PubMed:26340985). In scalp sections, present in the interfollicular epidermis and infundibulum including the entire outer root sheath of the hair follicles and also in the sebocytes (at protein level) (PubMed:26340985). In sweat glands, expressed in peripheral and luminal cells of the lower duct and in peripheral cells of the middle/upper duct with no expression observed in luminal cells (at protein level) (PubMed:26340985). In embryos at the 14th week of pregnancy, detected in basal and parabasal layers but is absent from the uppermost epidermal layer (at protein level) (PubMed:26340985). Expressed in tongue epithelium (PubMed:15737194)

KRT78 Antibody - middle region - Protocols

Provided below are standard protocols that you may find useful for product applications.

- [Western Blot](#)
- [Blocking Peptides](#)
- [Dot Blot](#)
- [Immunohistochemistry](#)
- [Immunofluorescence](#)
- [Immunoprecipitation](#)
- [Flow Cytometry](#)
- [Cell Culture](#)

KRT78 Antibody - middle region - Images



Host: Rabbit
Target Name: KRT78
Sample Tissue: HepG2 Whole cell lysate
s
Antibody Dilution: 1.0µg/ml

KRT78 Antibody - middle region - References

Ota T.,et al.Nat. Genet. 36:40-45(2004).
Bechtel S.,et al.BMC Genomics 8:399-399(2007).
Scherer S.E.,et al.Nature 440:346-351(2006).
Mural R.J.,et al.Submitted (JUL-2005) to the EMBL/GenBank/DDBJ databases.
Hesse M.,et al.J. Cell Sci. 114:2569-2575(2001).