

MCMBP Antibody - N-terminal region
Rabbit Polyclonal Antibody
Catalog # AI15881**Specification**

MCMBP Antibody - N-terminal region - Product Information

Application	WB
Primary Accession	Q9BTE3
Other Accession	NM_024834 , NP_079110
Reactivity	Human, Rat, Rabbit, Pig, Horse, Bovine, Guinea Pig, Dog
Predicted	Human, Rat, Rabbit, Pig, Horse, Bovine, Guinea Pig, Dog
Host	Rabbit
Clonality	Polyclonal
Calculated MW	72kDa KDa

MCMBP Antibody - N-terminal region - Additional Information**Gene ID** 79892**Alias Symbol** C10orf119, MCM-BP**Other Names**

Mini-chromosome maintenance complex-binding protein, MCM-BP, MCM-binding protein, MCMBP, C10orf119

Format

Liquid. Purified antibody supplied in 1x PBS buffer with 0.09% (w/v) sodium azide and 2% sucrose.

Reconstitution & Storage

Add 50 ul of distilled water. Final anti-MCMBP antibody concentration is 1 mg/ml in PBS buffer with 2% sucrose. For longer periods of storage, store at 20°C. Avoid repeat freeze-thaw cycles.

Precautions

MCMBP Antibody - N-terminal region is for research use only and not for use in diagnostic or therapeutic procedures.

MCMBP Antibody - N-terminal region - Protein Information**Name** MCMBP**Synonyms** C10orf119**Function**

Associated component of the MCM complex that acts as a regulator of DNA replication. Binds to the MCM complex during late S phase and promotes the disassembly of the MCM complex from chromatin, thereby acting as a key regulator of pre-replication complex (pre-RC) unloading from replicated DNA. Can dissociate the MCM complex without addition of ATP; probably acts by

destabilizing interactions of each individual subunits of the MCM complex. Required for sister chromatid cohesion.

Cellular Location

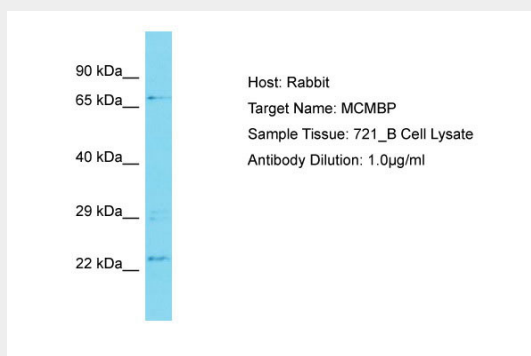
Nucleus. Note=Associates with chromatin. Highly associated with chromatin in G1/S and S phases, reduced binding to chromatin in G2, and further decreased binding in early M phase. It then reassociates with chromatin in late M phase. Dissociates from chromatin later than component of the MCM complex

MCMBP Antibody - N-terminal region - Protocols

Provided below are standard protocols that you may find useful for product applications.

- [Western Blot](#)
- [Blocking Peptides](#)
- [Dot Blot](#)
- [Immunohistochemistry](#)
- [Immunofluorescence](#)
- [Immunoprecipitation](#)
- [Flow Cytometry](#)
- [Cell Culture](#)

MCMBP Antibody - N-terminal region - Images



Host: Rabbit

Target Name: MCMBP

Sample Tissue: 721_B Whole cell lysate

s

Antibody Dilution: 1.0µg/ml MCMBP is supported by BioGPS gene expression data to be expressed in 721_B

MCMBP Antibody - N-terminal region - Background

Associated component of the MCM complex that acts as a regulator of DNA replication. Binds to the MCM complex during late S phase and promotes the disassembly of the MCM complex from chromatin, thereby acting as a key regulator of pre-replication complex (pre-RC) unloading from replicated DNA. Can dissociate the MCM complex without addition of ATP; probably acts by destabilizing interactions of each individual subunits of the MCM complex. Required for sister chromatid cohesion.

MCMBP Antibody - N-terminal region - References

Ota T., et al. Nat. Genet. 36:40-45(2004).

Ebert L.,et al.Submitted (JUN-2004) to the EMBL/GenBank/DDBJ databases.
Deloukas P.,et al.Nature 429:375-381(2004).
Sakwe A.M.,et al.Mol. Cell. Biol. 27:3044-3055(2007).
Dephoure N.,et al.Proc. Natl. Acad. Sci. U.S.A. 105:10762-10767(2008).