

**SLX1B Antibody - N-terminal region**  
**Rabbit Polyclonal Antibody**  
**Catalog # AI15971****Specification**

---

**SLX1B Antibody - N-terminal region - Product Information**

Application	WB
Primary Accession	<a href="#">Q9BQ83</a>
Reactivity	Human, Mouse, Rat, Rabbit, Horse, Bovine, Guinea Pig, Dog
Predicted	Human, Mouse, Rat, Rabbit, Pig, Horse, Bovine, Guinea Pig, Dog
Host	Rabbit
Clonality	Polyclonal
Calculated MW	30kDa kDa

**SLX1B Antibody - N-terminal region - Additional Information****Gene ID** 548593;79008**Other Names**

Structure-specific endonuclease subunit SLX1 {ECO:0000255|HAMAP-Rule:MF\_03100}, 3.1.-.- {ECO:0000255|HAMAP-Rule:MF\_03100}, GIY-YIG domain-containing protein 1 {ECO:0000255|HAMAP-Rule:MF\_03100}, SLX1A {ECO:0000255|HAMAP-Rule:MF\_03100}

**Format**

Liquid. Purified antibody supplied in 1x PBS buffer with 0.09% (w/v) sodium azide and 2% sucrose.

**Reconstitution & Storage**

Add 50 µl of distilled water. Final Anti-SLX1B antibody concentration is 1 mg/ml in PBS buffer with 2% sucrose. For longer periods of storage, store at -20°C. Avoid repeat freeze-thaw cycles.

**Precautions**

SLX1B Antibody - N-terminal region is for research use only and not for use in diagnostic or therapeutic procedures.

**SLX1B Antibody - N-terminal region - Protein Information****Name** SLX1A {ECO:0000255|HAMAP-Rule:MF\_03100}**Function**

Catalytic subunit of the SLX1-SLX4 structure-specific endonuclease that resolves DNA secondary structures generated during DNA repair and recombination. Has endonuclease activity towards branched DNA substrates, introducing single-strand cuts in duplex DNA close to junctions with ss-DNA. Has a preference for 5'-flap structures, and promotes symmetrical cleavage of static and migrating Holliday junctions (HJs). Resolves HJs by generating two pairs of ligatable, nicked duplex products.

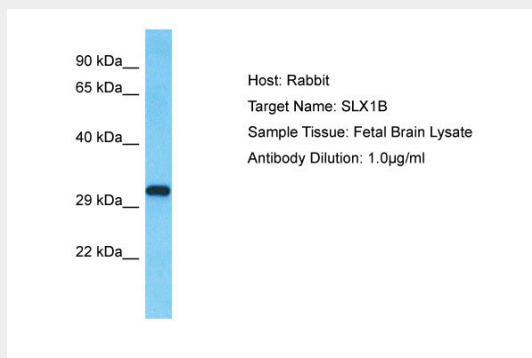
**Cellular Location**

Nucleus {ECO:0000255|HAMAP-Rule:MF\_03100, ECO:0000269|PubMed:19596236}

**SLX1B Antibody - N-terminal region - Protocols**

Provided below are standard protocols that you may find useful for product applications.

- [Western Blot](#)
- [Blocking Peptides](#)
- [Dot Blot](#)
- [Immunohistochemistry](#)
- [Immunofluorescence](#)
- [Immunoprecipitation](#)
- [Flow Cytometry](#)
- [Cell Culture](#)

**SLX1B Antibody - N-terminal region - Images**

Host: Rabbit  
Target Name: SLX1B  
Sample Tissue: Fetal Brain lysates  
Antibody Dilution: 1.0µg/ml

**SLX1B Antibody - N-terminal region - Background**

Catalytic subunit of the SLX1-SLX4 structure-specific endonuclease that resolves DNA secondary structures generated during DNA repair and recombination. Has endonuclease activity towards branched DNA substrates, introducing single-strand cuts in duplex DNA close to junctions with ss-DNA. Has a preference for 5'-flap structures, and promotes symmetrical cleavage of static and migrating Holliday junctions (HJs). Resolves HJs by generating two pairs of ligatable, nicked duplex products.

**SLX1B Antibody - N-terminal region - References**

Martin J., et al. Nature 432:988-994(2004).  
Hildebrandt M.A.T., et al. Biochem. Biophys. Res. Commun. 321:870-878(2004).  
Svendsen J.M., et al. Cell 138:63-77(2009).  
Fekairi S., et al. Cell 138:78-89(2009).  
Munoz I.M., et al. Mol. Cell 35:116-127(2009).