

ILEU Antibody - middle region
Rabbit Polyclonal Antibody
Catalog # AI16125**Specification**

ILEU Antibody - middle region - Product Information

Application	WB
Primary Accession	P30740
Other Accession	XP_006715071
Reactivity	Human
Host	Rabbit
Clonality	Polyclonal
Calculated MW	41kDa KDa

ILEU Antibody - middle region - Additional Information**Gene ID 1992**

Alias Symbol **SERPINB1, ELANH2, MNEI, PI2,**
Other Names

Leukocyte elastase inhibitor, LEI, Monocyte/neutrophil elastase inhibitor, EI, M/NEI, Peptidase inhibitor 2, PI-2, Serpin B1, SERPINB1, ELANH2, MNEI, PI2

Format

Liquid. Purified antibody supplied in 1x PBS buffer with 0.09% (w/v) sodium azide and 2% sucrose.

Reconstitution & Storage

Add 50 µl of distilled water. Final Anti-ILEU antibody concentration is 1 mg/ml in PBS buffer with 2% sucrose. For longer periods of storage, store at -20°C. Avoid repeat freeze-thaw cycles.

Precautions

ILEU Antibody - middle region is for research use only and not for use in diagnostic or therapeutic procedures.

ILEU Antibody - middle region - Protein Information

Name SERPINB1

Synonyms ELANH2, MNEI, PI2

Function

Neutrophil serine protease inhibitor that plays an essential role in the regulation of the innate immune response, inflammation and cellular homeostasis (PubMed:30692621). Acts primarily to protect the cell from proteases released in the cytoplasm during stress or infection. These proteases are important in killing microbes but when released from granules, these potent enzymes also destroy host proteins and contribute to mortality. Regulates the activity of the neutrophil proteases elastase, cathepsin G, proteinase-3, chymase, chymotrypsin, and kallikrein-3

(PubMed:11747453, PubMed:30692621). Acts also as a potent intracellular inhibitor of GZMH by directly blocking its proteolytic activity (PubMed:23269243). During inflammation, limits the activity of inflammatory caspases CASP1, CASP4 and CASP5 by suppressing their caspase-recruitment domain (CARD) oligomerization and enzymatic activation (PubMed:30692621). When secreted, promotes the proliferation of beta-cells via its protease inhibitory function (PubMed:26701651).

Cellular Location

Secreted. Cytoplasm. Cytolytic granule. Early endosome

Tissue Location

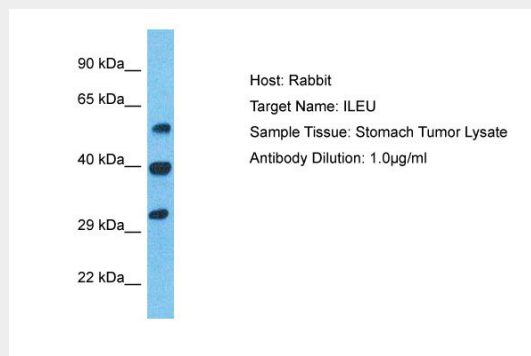
In human bone marrow, present in all CD45+ populations. Expression levels are highest in the neutrophil lineage, intermediate in monocytic, and lowest in lymphocytic lineage. Within the neutrophil lineage, expression is highest in promyelocytes

ILEU Antibody - middle region - Protocols

Provided below are standard protocols that you may find useful for product applications.

- [Western Blot](#)
- [Blocking Peptides](#)
- [Dot Blot](#)
- [Immunohistochemistry](#)
- [Immunofluorescence](#)
- [Immunoprecipitation](#)
- [Flow Cytometry](#)
- [Cell Culture](#)

ILEU Antibody - middle region - Images



Host: Rabbit
Target Name: ILEU
Sample Tissue: Stomach Tumor lysates
Antibody Dilution: 1.0µg/ml

ILEU Antibody - middle region - Background

Regulates the activity of the neutrophil proteases elastase, cathepsin G, proteinase-3, chymase, chymotrypsin, and kallikrein-3. Also functions as a potent intracellular inhibitor of granzyme H.

ILEU Antibody - middle region - References

Remold-O'Donnell E.,et al.Proc. Natl. Acad. Sci. U.S.A. 89:5635-5639(1992).
Zeng W.,et al.Gene 213:179-187(1998).
Ota T.,et al.Nat. Genet. 36:40-45(2004).
Kalnine N.,et al.Submitted (MAY-2003) to the EMBL/GenBank/DDBJ databases.
Totoki Y.,et al.Submitted (APR-2005) to the EMBL/GenBank/DDBJ databases.