

**CLIC3 Antibody - middle region**  
**Rabbit Polyclonal Antibody**  
**Catalog # AI16145****Specification**

---

**CLIC3 Antibody - middle region - Product Information**

Application	WB
Primary Accession	<a href="#">O95833</a>
Other Accession	<a href="#">NP_004660</a>
Reactivity	Human
Host	Rabbit
Clonality	Polyclonal
Calculated MW	25kDa KDa

**CLIC3 Antibody - middle region - Additional Information****Gene ID** 9022

Alias Symbol	CLIC3,
<b>Other Names</b>	
Chloride intracellular channel protein 3, CLIC3	

**Format**

Liquid. Purified antibody supplied in 1x PBS buffer with 0.09% (w/v) sodium azide and 2% sucrose.

**Reconstitution & Storage**

Add 50 µl of distilled water. Final Anti-CLIC3 antibody concentration is 1 mg/ml in PBS buffer with 2% sucrose. For longer periods of storage, store at -20°C. Avoid repeat freeze-thaw cycles.

**Precautions**

CLIC3 Antibody - middle region is for research use only and not for use in diagnostic or therapeutic procedures.

**CLIC3 Antibody - middle region - Protein Information****Name** CLIC3**Function**

Can insert into membranes and form chloride ion channels. May participate in cellular growth control.

**Cellular Location**

Nucleus. Membrane; Single-pass membrane protein. Cytoplasm. Note=Predominantly nuclear. Some protein was found in the cytoplasm. Exists both as soluble cytoplasmic protein and as membrane protein with probably a single transmembrane domain (By similarity)

**Tissue Location**

Detected in placenta (at protein level). Widely expressed. High expression is found in placenta

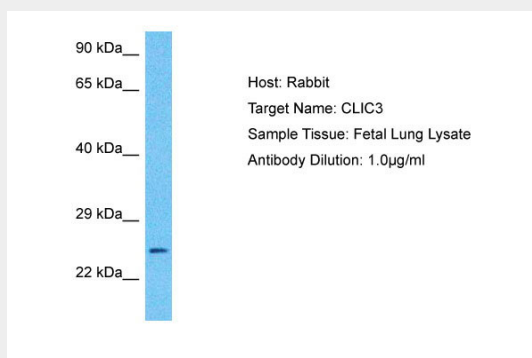
followed by lung and heart. Low expression in skeletal muscle, kidney and pancreas

### CLIC3 Antibody - middle region - Protocols

Provided below are standard protocols that you may find useful for product applications.

- [Western Blot](#)
- [Blocking Peptides](#)
- [Dot Blot](#)
- [Immunohistochemistry](#)
- [Immunofluorescence](#)
- [Immunoprecipitation](#)
- [Flow Cytometry](#)
- [Cell Culture](#)

### CLIC3 Antibody - middle region - Images



Host: Rabbit  
Target Name: CLIC3  
Sample Tissue: Fetal Lung lysates  
Antibody Dilution: 1.0µg/ml

### CLIC3 Antibody - middle region - Background

Can insert into membranes and form chloride ion channels. May participate in cellular growth control.

### CLIC3 Antibody - middle region - References

Humphray S.J.,et al.Nature 429:369-374(2004).  
Mural R.J.,et al.Submitted (JUL-2005) to the EMBL/GenBank/DDBJ databases.  
Qian Z.,et al.J. Biol. Chem. 274:1621-1627(1999).  
Money T.T.,et al.Placenta 28:429-436(2007).  
Littler D.R.,et al.Proteins 78:1594-1600(2010).