

TNFSF12 antibody - N-terminal region
Rabbit Polyclonal Antibody
Catalog # AI16218**Specification**

TNFSF12 antibody - N-terminal region - Product Information

Application	WB
Primary Accession	O43508
Other Accession	NM_003809 , NP_003800
Reactivity	Human, Mouse, Horse
Predicted	Human, Mouse, Horse
Host	Rabbit
Clonality	Polyclonal
Calculated MW	27kDa KDa

TNFSF12 antibody - N-terminal region - Additional Information**Gene ID** 407977;8742**Alias Symbol** **APO3L, DR3LG, TWEAK****Other Names**

Tumor necrosis factor ligand superfamily member 12, APO3 ligand, TNF-related weak inducer of apoptosis, TWEAK, Tumor necrosis factor ligand superfamily member 12, membrane form, Tumor necrosis factor ligand superfamily member 12, secreted form, TNFSF12, APO3L, DR3LG

Format

Liquid. Purified antibody supplied in 1x PBS buffer with 0.09% (w/v) sodium azide and 2% sucrose.

Reconstitution & Storage

Add 50 ul of distilled water. Final anti-TNFSF12 antibody concentration is 1 mg/ml in PBS buffer with 2% sucrose. For longer periods of storage, store at 20°C. Avoid repeat freeze-thaw cycles.

Precautions

TNFSF12 antibody - N-terminal region is for research use only and not for use in diagnostic or therapeutic procedures.

TNFSF12 antibody - N-terminal region - Protein Information**Name** TNFSF12**Synonyms** APO3L, DR3LG**Function**

Binds to FN14 and possibly also to TNFSF12/APO3. Weak inducer of apoptosis in some cell types. Mediates NF-kappa-B activation. Promotes angiogenesis and the proliferation of endothelial cells. Also involved in induction of inflammatory cytokines. Promotes IL8 secretion.

Cellular Location

Cell membrane; Single-pass type II membrane protein [Isoform TWE-PRIL]: Cell membrane; Single-pass membrane protein

Tissue Location

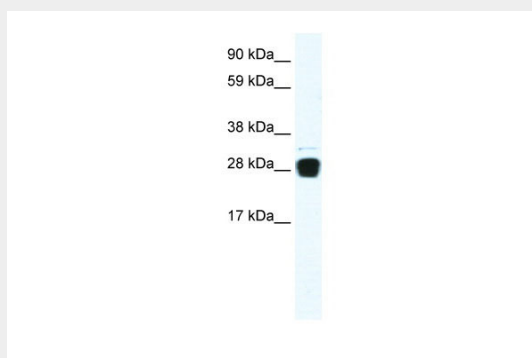
Highly expressed in adult heart, pancreas, skeletal muscle, brain, colon, small intestine, lung, ovary, prostate, spleen, lymph node, appendix and peripheral blood lymphocytes. Low expression in kidney, testis, liver, placenta, thymus and bone marrow. Also detected in fetal kidney, liver, lung and brain

TNFSF12 antibody - N-terminal region - Protocols

Provided below are standard protocols that you may find useful for product applications.

- [Western Blot](#)
- [Blocking Peptides](#)
- [Dot Blot](#)
- [Immunohistochemistry](#)
- [Immunofluorescence](#)
- [Immunoprecipitation](#)
- [Flow Cytometry](#)
- [Cell Culture](#)

TNFSF12 antibody - N-terminal region - Images



WB Suggested Anti-TNFSF12 Antibody Titration: 0.2-1 µg/ml

ELISA Titer: 1:12500

Positive Control: Human muscle