

ID2 antibody - middle region
Rabbit Polyclonal Antibody
Catalog # AI16264**Specification**

ID2 antibody - middle region - Product Information

Application	WB
Primary Accession	Q02363
Other Accession	NM_002166 , NP_002157
Reactivity	Human, Mouse, Rat, Pig, Bovine
Predicted	Human, Mouse, Rat, Pig, Chicken, Bovine
Host	Rabbit
Clonality	Polyclonal
Calculated MW	15kDa KDa

ID2 antibody - middle region - Additional Information**Gene ID 3398**Alias Symbol **GIG8, ID2A, ID2H, MGC26389, bHLHb26****Other Names**

DNA-binding protein inhibitor ID-2, Class B basic helix-loop-helix protein 26, bHLHb26, Inhibitor of DNA binding 2, Inhibitor of differentiation 2, ID2, BHLHB26

Format

Liquid. Purified antibody supplied in 1x PBS buffer with 0.09% (w/v) sodium azide and 2% sucrose.

Reconstitution & Storage

Add 50 ul of distilled water. Final anti-ID2 antibody concentration is 1 mg/ml in PBS buffer with 2% sucrose. For longer periods of storage, store at 20°C. Avoid repeat freeze-thaw cycles.

Precautions

ID2 antibody - middle region is for research use only and not for use in diagnostic or therapeutic procedures.

ID2 antibody - middle region - Protein Information**Name ID2****Synonyms BHLHB26****Function**

Transcriptional regulator (lacking a basic DNA binding domain) which negatively regulates the basic helix-loop-helix (bHLH) transcription factors by forming heterodimers and inhibiting their DNA binding and transcriptional activity. Implicated in regulating a variety of cellular processes, including cellular growth, senescence, differentiation, apoptosis, angiogenesis, and neoplastic transformation. Inhibits skeletal muscle and cardiac myocyte differentiation. Regulates the circadian clock by repressing the transcriptional activator activity of the CLOCK-BMAL1

heterodimer. Restricts the CLOCK and BMAL1 localization to the cytoplasm. Plays a role in both the input and output pathways of the circadian clock: in the input component, is involved in modulating the magnitude of photic entrainment and in the output component, contributes to the regulation of a variety of liver clock-controlled genes involved in lipid metabolism.

Cellular Location

Cytoplasm {ECO:0000250|UniProtKB:P41136}. Nucleus {ECO:0000250|UniProtKB:P41136}

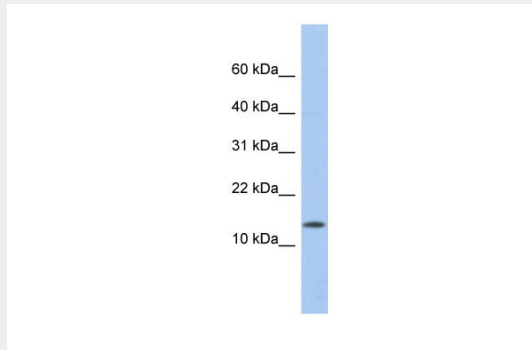
Tissue Location

Highly expressed in early fetal tissues, including those of the central nervous system

ID2 antibody - middle region - Protocols

Provided below are standard protocols that you may find useful for product applications.

- [Western Blot](#)
- [Blocking Peptides](#)
- [Dot Blot](#)
- [Immunohistochemistry](#)
- [Immunofluorescence](#)
- [Immunoprecipitation](#)
- [Flow Cytometry](#)
- [Cell Culture](#)

ID2 antibody - middle region - Images

WB Suggested Anti-ID2 Antibody Titration: 0.2-1 µg/ml

ELISA Titer: 1:1562500

Positive Control: Human Thymus

ID2 antibody - middle region - Background

Transcriptional regulator (lacking a basic DNA binding domain) which negatively regulates the basic helix-loop-helix (bHLH) transcription factors by forming heterodimers and inhibiting their DNA binding and transcriptional activity. Implicated in regulating a variety of cellular processes, including cellular growth, senescence, differentiation, apoptosis, angiogenesis, and neoplastic transformation. Inhibits skeletal muscle and cardiac myocyte differentiation. Regulates the circadian clock by repressing the transcriptional activator activity of the CLOCK-ARNTL/BMAL1 heterodimer. Restricts the CLOCK and ARNTL/BMAL1 localization to the cytoplasm. Plays a role in both the input and output pathways of the circadian clock: in the input component, is involved in modulating the magnitude of photic entrainment and in the output component, contributes to the regulation of a variety of liver clock-controlled genes involved in lipid metabolism.

ID2 antibody - middle region - References

Hara E.,et al.J. Biol. Chem. 269:2139-2145(1994).
Biggs J.,et al.Proc. Natl. Acad. Sci. U.S.A. 89:1512-1516(1992).
Kim J.Y.,et al.Mol. Endocrinol. 18:776-790(2004).
Ward S.M.,et al.J. Biol. Chem. 285:38987-39000(2010).