

**OPRD1 / Delta Opioid Receptor Antibody (Extracellular Domain)**  
**Rabbit Polyclonal Antibody**  
**Catalog # ALS10069****Specification**

---

**OPRD1 / Delta Opioid Receptor Antibody (Extracellular Domain) - Product Information**

Application	IHC
Primary Accession	<a href="#">P41143</a>
Reactivity	Human, Rabbit, Monkey, Horse, Dog
Host	Rabbit
Clonality	Polyclonal
Calculated MW	40kDa KDa

**OPRD1 / Delta Opioid Receptor Antibody (Extracellular Domain) - Additional Information****Gene ID** 4985**Other Names**

Delta-type opioid receptor, D-OR-1, DOR-1, OPRD1, OPRD

**Target/Specificity**

Human Delta Opioid Receptor. BLAST analysis of the peptide immunogen showed no homology with other human proteins.

**Reconstitution & Storage**

Long term: -70°C; Short term: +4°C

**Precautions**

OPRD1 / Delta Opioid Receptor Antibody (Extracellular Domain) is for research use only and not for use in diagnostic or therapeutic procedures.

**OPRD1 / Delta Opioid Receptor Antibody (Extracellular Domain) - Protein Information****Name** OPRD1**Synonyms** OPRD**Function**

G-protein coupled receptor that functions as a receptor for endogenous enkephalins and for a subset of other opioids. Ligand binding causes a conformation change that triggers signaling via guanine nucleotide-binding proteins (G proteins) and modulates the activity of down-stream effectors, such as adenylate cyclase. Signaling leads to the inhibition of adenylate cyclase activity. Inhibits neurotransmitter release by reducing calcium ion currents and increasing potassium ion conductance. Plays a role in the perception of pain and in opiate-mediated analgesia. Plays a role in developing analgesic tolerance to morphine.

**Cellular Location**

Cell membrane; Multi-pass membrane protein

**Tissue Location**

Detected in oocytes (at protein level). Detected in brain cortex, hypothalamus, hippocampus and olfactory bulb. Detected in oocytes.

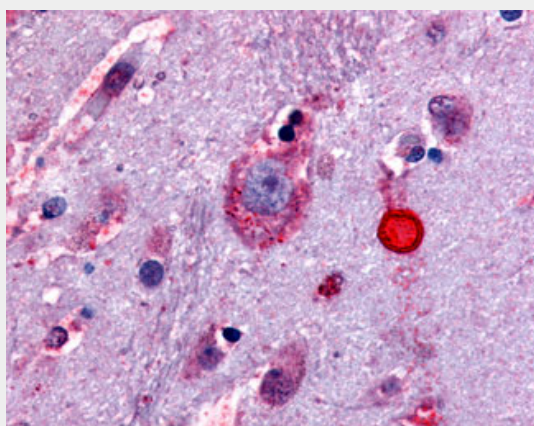
**Volume**

50 µl

**OPRD1 / Delta Opioid Receptor Antibody (Extracellular Domain) - Protocols**

Provided below are standard protocols that you may find useful for product applications.

- [Western Blot](#)
- [Blocking Peptides](#)
- [Dot Blot](#)
- [Immunohistochemistry](#)
- [Immunofluorescence](#)
- [Immunoprecipitation](#)
- [Flow Cytometry](#)
- [Cell Culture](#)

**OPRD1 / Delta Opioid Receptor Antibody (Extracellular Domain) - Images**

Anti-Delta Opioid Receptor antibody ALS10069 IHC of human brain.

**OPRD1 / Delta Opioid Receptor Antibody (Extracellular Domain) - Background**

G-protein coupled receptor that functions as receptor for endogenous enkephalins and for a subset of other opioids. Ligand binding causes a conformation change that triggers signaling via guanine nucleotide-binding proteins (G proteins) and modulates the activity of down-stream effectors, such as adenylate cyclase. Signaling leads to the inhibition of adenylate cyclase activity. Inhibits neurotransmitter release by reducing calcium ion currents and increasing potassium ion conductance. Plays a role in the perception of pain and in opiate-mediated analgesia. Plays a role in developing analgesic tolerance to morphine.

**OPRD1 / Delta Opioid Receptor Antibody (Extracellular Domain) - References**

Knapp R.J., et al. Life Sci. 54:PL463-PL469(1994).  
Knapp R.J., et al. Submitted (JAN-2003) to the EMBL/GenBank/DDBJ databases.  
Simonin F., et al. Mol. Pharmacol. 46:1015-1021(1994).  
Kaighin V.A., et al. Submitted (JUL-2008) to the EMBL/GenBank/DDBJ databases.

Gregory S.G.,et al.Nature 441:315-321(2006).