

**ADRA1B Antibody (Cytoplasmic Domain)**  
**Rabbit Polyclonal Antibody**  
**Catalog # ALS10148****Specification**

---

**ADRA1B Antibody (Cytoplasmic Domain) - Product Information**

Application	IHC
Primary Accession	<a href="#">P35368</a>
Reactivity	Human, Monkey
Host	Rabbit
Clonality	Polyclonal
Calculated MW	57kDa KDa

**ADRA1B Antibody (Cytoplasmic Domain) - Additional Information****Gene ID** 147**Other Names**

Alpha-1B adrenergic receptor, Alpha-1B adrenoreceptor, Alpha-1B adrenoceptor, ADRA1B

**Target/Specificity**

Human ADRA1B. BLAST analysis of the peptide immunogen showed no homology with other human proteins, except SLC22A3 (50%).

**Reconstitution & Storage**

Long term: -70°C; Short term: +4°C

**Precautions**

ADRA1B Antibody (Cytoplasmic Domain) is for research use only and not for use in diagnostic or therapeutic procedures.

**ADRA1B Antibody (Cytoplasmic Domain) - Protein Information****Name** ADRA1B**Function**

This alpha-adrenergic receptor mediates its action by association with G proteins that activate a phosphatidylinositol- calcium second messenger system. Its effect is mediated by G(q) and G(11) proteins. Nuclear ADRA1A-ADRA1B heterooligomers regulate phenylephrine (PE)-stimulated ERK signaling in cardiac myocytes.

**Cellular Location**

Nucleus membrane; Multi-pass membrane protein. Cell membrane; Multi-pass membrane protein. Cytoplasm Membrane, caveola. Note=Location at the nuclear membrane facilitates heterooligomerization and regulates ERK- mediated signaling in cardiac myocytes. signaling in cardiac myocytes Colocalizes with GNAQ, PLCB1 as well as LAP2 at the nuclear membrane of cardiac myocytes

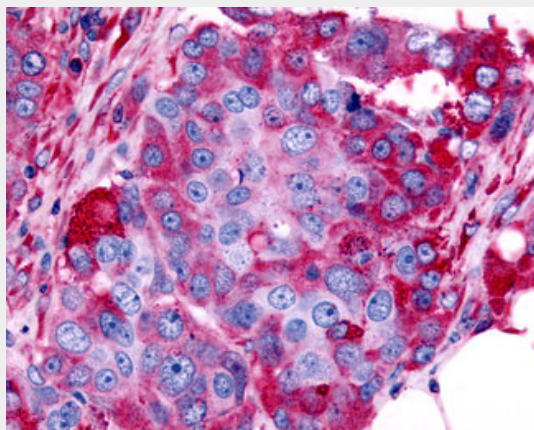
**Volume**  
50 µl

### **ADRA1B Antibody (Cytoplasmic Domain) - Protocols**

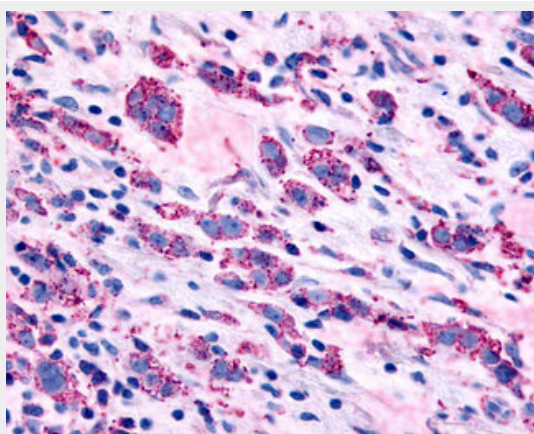
Provided below are standard protocols that you may find useful for product applications.

- [Western Blot](#)
- [Blocking Peptides](#)
- [Dot Blot](#)
- [Immunohistochemistry](#)
- [Immunofluorescence](#)
- [Immunoprecipitation](#)
- [Flow Cytometry](#)
- [Cell Culture](#)

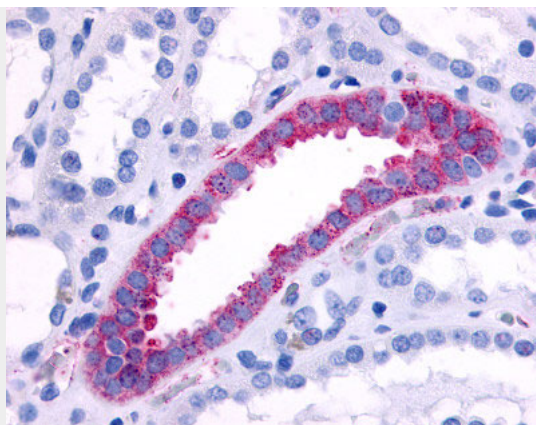
### **ADRA1B Antibody (Cytoplasmic Domain) - Images**



Anti-ADRA1B antibody IHC of human Ovary, Carcinoma.



Anti-ADRA1B antibody IHC of human Breast, Carcinoma.



Anti-ADRA1B antibody ALS10148 IHC of human kidney, collecting duct.

### **ADRA1B Antibody (Cytoplasmic Domain) - Background**

This alpha-adrenergic receptor mediates its action by association with G proteins that activate a phosphatidylinositol- calcium second messenger system. Its effect is mediated by G(q) and G(11) proteins. Nuclear ADRA1A-ADRA1B heterooligomers regulate phenylephrine (PE)-stimulated ERK signaling in cardiac myocytes.

### **ADRA1B Antibody (Cytoplasmic Domain) - References**

- Ramarao C.S.,et al.J. Biol. Chem. 267:21936-21945(1992).  
Forray C.,et al.Mol. Pharmacol. 45:703-708(1994).  
Schwinn D.A.,et al.J. Pharmacol. Exp. Ther. 272:134-142(1995).  
Wright C.D.,et al.Circ. Res. 103:992-1000(2008).  
Wright C.D.,et al.Cell. Signal. 24:794-802(2012).