

**PDE1C Antibody (C-Terminus)**  
**Rabbit Polyclonal Antibody**  
**Catalog # ALS10158****Specification**

---

**PDE1C Antibody (C-Terminus) - Product Information**

|                   |   |
|-------------------|---|
| Application       | IHC   |
| Primary Accession | <a href="#">Q14123</a>                                    |
| Reactivity        | Human, Mouse, Rabbit, Hamster, Monkey, Horse, Bovine, Dog |
| Host              | Rabbit  |
| Clonality         | Polyclonal  |
| Calculated MW     | 81kDa KDa   |

**PDE1C Antibody (C-Terminus) - Additional Information****Gene ID** 5137**Other Names**

Calcium/calmodulin-dependent 3', 5'-cyclic nucleotide phosphodiesterase 1C, Cam-PDE 1C, 3.1.4.17, hCam-3, PDE1C

**Target/Specificity**

Human PDE1C. BLAST analysis of the peptide immunogen showed no homology with other human proteins.

**Reconstitution & Storage**

Long term: -70°C; Short term: +4°C

**Precautions**

PDE1C Antibody (C-Terminus) is for research use only and not for use in diagnostic or therapeutic procedures.

**PDE1C Antibody (C-Terminus) - Protein Information****Name** PDE1C ([HGNC:8776](#))**Function**

Calmodulin-dependent cyclic nucleotide phosphodiesterase with a dual specificity for the second messengers cAMP and cGMP, which are key regulators of many important physiological processes (PubMed: [8557689](http://www.uniprot.org/citations/8557689), PubMed: [29860631](http://www.uniprot.org/citations/29860631)). Has a high affinity for both cAMP and cGMP (PubMed: [8557689](http://www.uniprot.org/citations/8557689)). Modulates the amplitude and duration of the cAMP signal in sensory cilia in response to odorant stimulation, hence contributing to the generation of action potentials. Regulates smooth muscle cell proliferation. Regulates the stability of growth factor receptors, including PDGFRB (Probable).

**Cellular Location**

Lysosome {ECO:0000250|UniProtKB:Q64338}.

**Tissue Location**

Isoform PDE1C2 is present in the heart and brain and, at lower levels in the lung, liver, kidney and skeletal muscle (PubMed:8557689). Isoform PDE1C1 is expressed in the heart and brain and, at lower levels in lung (PubMed:8557689). Also expressed at low levels in uterus and testis (PubMed:8557689)

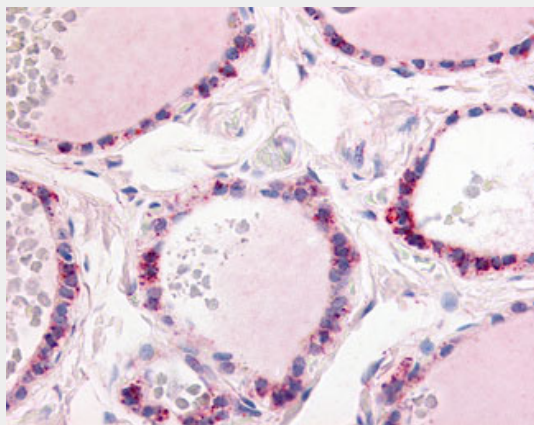
**Volume**

50 µl

**PDE1C Antibody (C-Terminus) - Protocols**

Provided below are standard protocols that you may find useful for product applications.

- [Western Blot](#)
- [Blocking Peptides](#)
- [Dot Blot](#)
- [Immunohistochemistry](#)
- [Immunofluorescence](#)
- [Immunoprecipitation](#)
- [Flow Cytometry](#)
- [Cell Culture](#)

**PDE1C Antibody (C-Terminus) - Images**

Anti-PDE1C antibody ALS10158 IHC of human thyroid.

**PDE1C Antibody (C-Terminus) - Background**

Cyclic nucleotide phosphodiesterase with a dual- specificity for the second messengers cAMP and cGMP, which are key regulators of many important physiological processes. Has a high affinity for both cAMP and cGMP.

**PDE1C Antibody (C-Terminus) - References**

Loughney K.,et al.J. Biol. Chem. 271:796-806(1996).  
Ota T.,et al.Nat. Genet. 36:40-45(2004).  
Hillier L.W.,et al.Nature 424:157-164(2003).  
Oppermann F.S.,et al.Mol. Cell. Proteomics 8:1751-1764(2009).

