

ADCYAP1R1 / PAC1 Receptor Antibody (C-Terminus)
Rabbit Polyclonal Antibody
Catalog # ALS10218**Specification**

ADCYAP1R1 / PAC1 Receptor Antibody (C-Terminus) - Product Information

| | |
|-------------------|--------------------------------------|
| Application | IHC |
| Primary Accession | P41586 |
| Reactivity | Human, Monkey, Chicken, Xenopus, Dog |
| Host | Rabbit |
| Clonality | Polyclonal |
| Calculated MW | 53kDa KDa |

ADCYAP1R1 / PAC1 Receptor Antibody (C-Terminus) - Additional Information**Gene ID** 117**Other Names**

Pituitary adenylate cyclase-activating polypeptide type I receptor, PACAP type I receptor, PACAP-R-1, PACAP-R1, ADCYAP1R1

Target/Specificity

Human ADCYAP1R1. BLAST analysis of the peptide immunogen showed no homology with other human proteins.

Reconstitution & Storage

Long term: -70°C; Short term: +4°C

Precautions

ADCYAP1R1 / PAC1 Receptor Antibody (C-Terminus) is for research use only and not for use in diagnostic or therapeutic procedures.

ADCYAP1R1 / PAC1 Receptor Antibody (C-Terminus) - Protein Information**Name** ADCYAP1R1**Function**

This is a receptor for PACAP-27 and PACAP-38. The activity of this receptor is mediated by G proteins which activate adenylyl cyclase. May regulate the release of adrenocorticotropin, luteinizing hormone, growth hormone, prolactin, epinephrine, and catecholamine. May play a role in spermatogenesis and sperm motility. Causes smooth muscle relaxation and secretion in the gastrointestinal tract.

Cellular Location

Cell membrane; Multi-pass membrane protein.

Tissue Location

Most abundant in the brain, low expression in the lung, liver, thymus, spleen, pancreas and

placenta

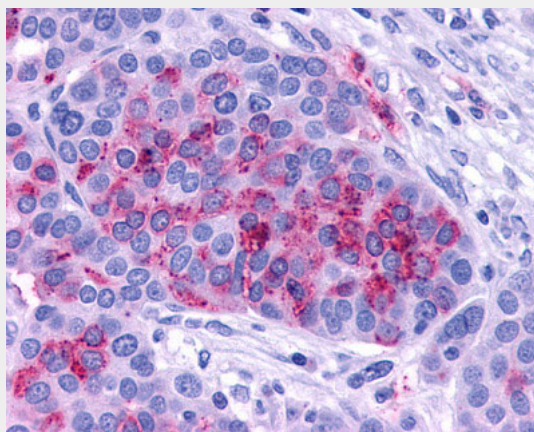
Volume
50 µl

ADCYAP1R1 / PAC1 Receptor Antibody (C-Terminus) - Protocols

Provided below are standard protocols that you may find useful for product applications.

- [Western Blot](#)
- [Blocking Peptides](#)
- [Dot Blot](#)
- [Immunohistochemistry](#)
- [Immunofluorescence](#)
- [Immunoprecipitation](#)
- [Flow Cytometry](#)
- [Cell Culture](#)

ADCYAP1R1 / PAC1 Receptor Antibody (C-Terminus) - Images



Anti-ADCYAP1R1 / PAC1 Receptor antibody IHC of human Ovary, Carcinoma.

ADCYAP1R1 / PAC1 Receptor Antibody (C-Terminus) - Background

This is a receptor for PACAP-27 and PACAP-38. The activity of this receptor is mediated by G proteins which activate adenylyl cyclase. May regulate the release of adrenocorticotropin, luteinizing hormone, growth hormone, prolactin, epinephrine, and catecholamine. May play a role in spermatogenesis and sperm motility. Causes smooth muscle relaxation and secretion in the gastrointestinal tract.

ADCYAP1R1 / PAC1 Receptor Antibody (C-Terminus) - References

Ogi K., et al. Biochem. Biophys. Res. Commun. 196:1511-1521(1993).
Suwa M., et al. Submitted (JUL-2001) to the EMBL/GenBank/DDBJ databases.
King M., et al. Submitted (AUG-2003) to the EMBL/GenBank/DDBJ databases.
Ota T., et al. Nat. Genet. 36:40-45(2004).
Hillier L.W., et al. Nature 424:157-164(2003).