

**NPY5R Antibody (Cytoplasmic Domain)**  
**Rabbit Polyclonal Antibody**  
**Catalog # ALS10262****Specification**

---

**NPY5R Antibody (Cytoplasmic Domain) - Product Information**

Application	IHC
Primary Accession	<a href="#">Q15761</a>
Reactivity	Human, Monkey
Host	Rabbit
Clonality	Polyclonal
Calculated MW	51kDa KDa

**NPY5R Antibody (Cytoplasmic Domain) - Additional Information****Gene ID** 4889**Other Names**

Neuropeptide Y receptor type 5, NPY5-R, NPY-Y5 receptor, NPY5-R, Y5 receptor, NPY5R, NPYR5

**Target/Specificity**

Human NPY5R. BLAST analysis of the peptide immunogen showed no homology with other human proteins.

**Reconstitution & Storage**

Long term: -70°C; Short term: +4°C

**Precautions**

NPY5R Antibody (Cytoplasmic Domain) is for research use only and not for use in diagnostic or therapeutic procedures.

**NPY5R Antibody (Cytoplasmic Domain) - Protein Information****Name** NPY5R**Synonyms** NPYR5**Function**

Receptor for neuropeptide Y and peptide YY. The activity of this receptor is mediated by G proteins that inhibit adenylate cyclase activity. Seems to be associated with food intake. Could be involved in feeding disorders.

**Cellular Location**

Cell membrane; Multi-pass membrane protein.

**Tissue Location**

Brain; hypothalamus.

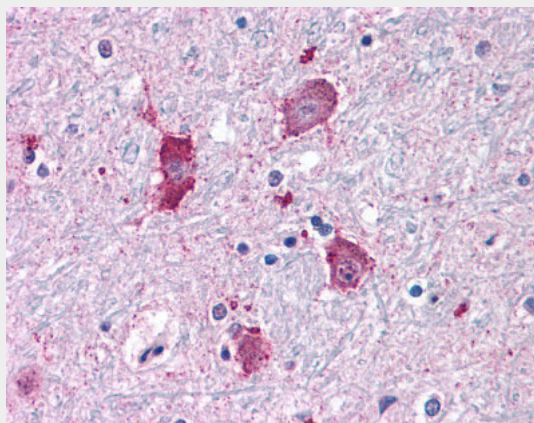
**Volume**  
50 µl

### **NPY5R Antibody (Cytoplasmic Domain) - Protocols**

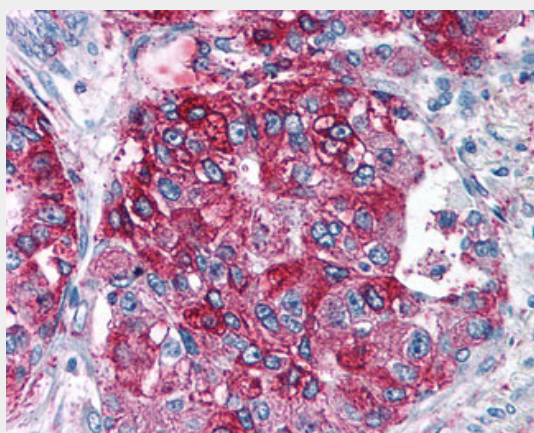
Provided below are standard protocols that you may find useful for product applications.

- [Western Blot](#)
- [Blocking Peptides](#)
- [Dot Blot](#)
- [Immunohistochemistry](#)
- [Immunofluorescence](#)
- [Immunoprecipitation](#)
- [Flow Cytometry](#)
- [Cell Culture](#)

### **NPY5R Antibody (Cytoplasmic Domain) - Images**



Anti-NPY5R antibody ALS10262 IHC of human brain, neurons and glia.



Anti-NPY5R antibody IHC of human Lung, Adenocarcinoma.

### **NPY5R Antibody (Cytoplasmic Domain) - Background**

Receptor for neuropeptide Y and peptide YY. The activity of this receptor is mediated by G proteins that inhibit adenylate cyclase activity. Seems to be associated with food intake. Could be involved in feeding disorders.

**NPY5R Antibody (Cytoplasmic Domain) - References**

Hu Y.,et al.J. Biol. Chem. 271:26315-26319(1996).  
Gerald C.,et al.Nature 382:168-171(1996).  
Herzog H.,et al.Genomics 41:315-319(1997).  
Kopatz S.A.,et al.Submitted (JUN-2003) to the EMBL/GenBank/DDBJ databases.  
Hillier L.W.,et al.Nature 434:724-731(2005).