

**GPR68 / OGR1 Antibody (C-Terminus)**  
**Rabbit Polyclonal Antibody**  
**Catalog # ALS10291****Specification**

---

**GPR68 / OGR1 Antibody (C-Terminus) - Product Information**

Application	IHC
Primary Accession	<a href="#">Q15743</a>
Reactivity	Human, Mouse, Rabbit, Hamster, Monkey, Pig, Horse, Bovine
Host	Rabbit
Clonality	Polyclonal
Calculated MW	41kDa KDa

**GPR68 / OGR1 Antibody (C-Terminus) - Additional Information****Gene ID** 8111**Other Names**

Ovarian cancer G-protein coupled receptor 1, OGR-1, G-protein coupled receptor 68, GPR12A, Sphingosylphosphorylcholine receptor, GPR68, OGR1

**Target/Specificity**

Human GPR68. BLAST analysis of the peptide immunogen showed no homology with other human proteins.

**Reconstitution & Storage**

Long term: -70°C; Short term: +4°C

**Precautions**

GPR68 / OGR1 Antibody (C-Terminus) is for research use only and not for use in diagnostic or therapeutic procedures.

**GPR68 / OGR1 Antibody (C-Terminus) - Protein Information****Name** GPR68**Synonyms** OGR1**Function**

Proton-sensing receptor involved in pH homeostasis. May represents an osteoblastic pH sensor regulating cell-mediated responses to acidosis in bone. Mediates its action by association with G proteins that stimulates inositol phosphate (IP) production or Ca(2+) mobilization. The receptor is almost silent at pH 7.8 but fully activated at pH 6.8. Also functions as a metastasis suppressor gene in prostate cancer (By similarity).

**Cellular Location**

Cell membrane; Multi-pass membrane protein.

**Tissue Location**

Found at low level in a wide range of tissues, but significantly expressed in lung, kidney, bone and nervous system

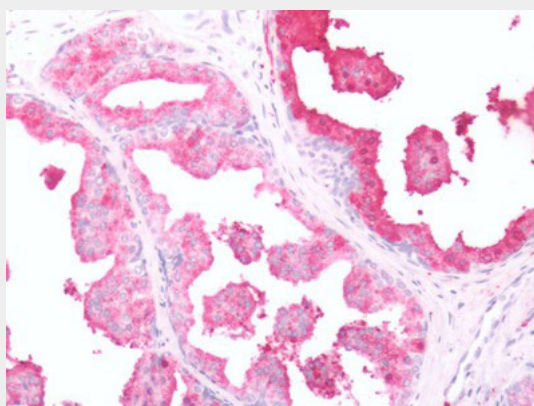
**Volume**

50 µl

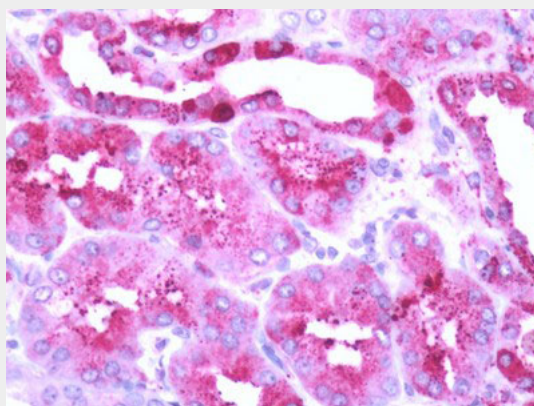
**GPR68 / OGR1 Antibody (C-Terminus) - Protocols**

Provided below are standard protocols that you may find useful for product applications.

- [Western Blot](#)
- [Blocking Peptides](#)
- [Dot Blot](#)
- [Immunohistochemistry](#)
- [Immunofluorescence](#)
- [Immunoprecipitation](#)
- [Flow Cytometry](#)
- [Cell Culture](#)

**GPR68 / OGR1 Antibody (C-Terminus) - Images**

Human Prostate: Formalin-Fixed, Paraffin-Embedded (FFPE)



Human Kidney: Formalin-Fixed, Paraffin-Embedded (FFPE)

**GPR68 / OGR1 Antibody (C-Terminus) - Background**

Proton-sensing receptor involved in pH homeostasis. May represents an osteoblastic pH sensor

regulating cell-mediated responses to acidosis in bone. Mediates its action by association with G proteins that stimulates inositol phosphate (IP) production or Ca(2+) mobilization. The receptor is almost silent at pH 7.8 but fully activated at pH 6.8. Function also as a metastasis suppressor gene in prostate cancer (By similarity).

#### **GPR68 / OGR1 Antibody (C-Terminus) - References**

An S.,et al.FEBS Lett. 375:121-124(1995).

Xu Y.,et al.Genomics 35:397-402(1996).

Kaighin V.A.,et al.Submitted (JUL-2008) to the EMBL/GenBank/DDBJ databases.

King M.M.,et al.Submitted (APR-2004) to the EMBL/GenBank/DDBJ databases.

Heilig R.,et al.Nature 421:601-607(2003).