

**ADGRE2 / EMR2 Antibody (N-Terminus)**  
**Rabbit Polyclonal Antibody**  
**Catalog # ALS10835****Specification**

---

**ADGRE2 / EMR2 Antibody (N-Terminus) - Product Information**

Application	IHC
Primary Accession	<a href="#">O9UHX3</a>
Reactivity	Human
Host	Rabbit
Clonality	Polyclonal
Calculated MW	90kDa KDa

**ADGRE2 / EMR2 Antibody (N-Terminus) - Additional Information****Gene ID** 30817**Other Names**

EGF-like module-containing mucin-like hormone receptor-like 2, EGF-like module receptor 2, CD312, EMR2

**Target/Specificity**

Human EMR2. BLAST analysis of the peptide immunogen showed no homology with other human proteins.

**Reconstitution & Storage**

Long term: -70°C; Short term: +4°C

**Precautions**

ADGRE2 / EMR2 Antibody (N-Terminus) is for research use only and not for use in diagnostic or therapeutic procedures.

**ADGRE2 / EMR2 Antibody (N-Terminus) - Protein Information****Name** ADGRE2 ([HGNC:3337](#))**Synonyms** EMR2**Function**

Cell surface receptor that binds to the chondroitin sulfate moiety of glycosaminoglycan chains and promotes cell attachment. Promotes granulocyte chemotaxis, degranulation and adhesion. In macrophages, promotes the release of inflammatory cytokines, including IL8 and TNF. Signals probably through G-proteins. Is a regulator of mast cell degranulation (PubMed:<a href="http://www.uniprot.org/citations/26841242" target="\_blank">26841242</a>).

**Cellular Location**

Cell membrane; Multi-pass membrane protein. Cell projection, ruffle membrane; Multi-pass membrane protein. Note=Localized at the leading edge of migrating cells.

**Tissue Location**

Expression is restricted to myeloid cells. Highest expression was found in peripheral blood leukocytes, followed by spleen and lymph nodes, with intermediate to low levels in thymus, bone marrow, fetal liver, placenta, and lung, and no expression in heart, brain, skeletal muscle, kidney, or pancreas. Expression is also detected in monocyte/macrophage and Jurkat cell lines but not in other cell lines tested. High expression in mast cells (PubMed:26841242)

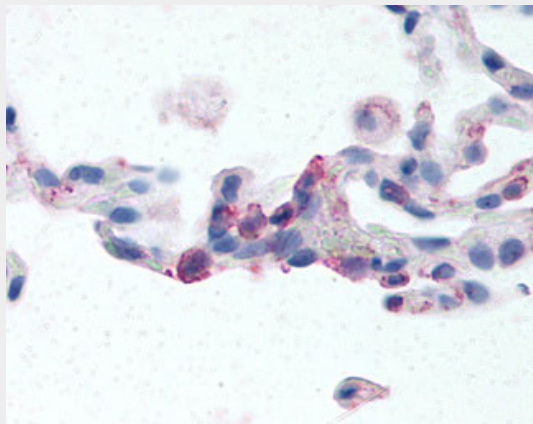
**Volume**

50 µl

**ADGRE2 / EMR2 Antibody (N-Terminus) - Protocols**

Provided below are standard protocols that you may find useful for product applications.

- [Western Blot](#)
- [Blocking Peptides](#)
- [Dot Blot](#)
- [Immunohistochemistry](#)
- [Immunofluorescence](#)
- [Immunoprecipitation](#)
- [Flow Cytometry](#)
- [Cell Culture](#)

**ADGRE2 / EMR2 Antibody (N-Terminus) - Images**

Anti-EMR2 antibody ALS10835 IHC of human lung, neutrophils.

**ADGRE2 / EMR2 Antibody (N-Terminus) - Background**

Cell surface receptor that binds to the chondroitin sulfate moiety of glycosaminoglycan chains and promotes cell attachment. Promotes granulocyte chemotaxis, degranulation and adhesion. In macrophages, promotes the release of inflammatory cytokines, including IL8 and TNF.

**ADGRE2 / EMR2 Antibody (N-Terminus) - References**

Lin H.-H., et al. Genomics 67:188-200(2000).  
Suwa M., et al. Submitted (JUL-2001) to the EMBL/GenBank/DDBJ databases.  
Ota T., et al. Nat. Genet. 36:40-45(2004).  
Grimwood J., et al. Nature 428:529-535(2004).  
Chang G.-W., et al. FEBS Lett. 547:145-150(2003).