

TRPM8 Antibody (N-Terminus)
Rabbit Polyclonal Antibody
Catalog # ALS10936**Specification**

TRPM8 Antibody (N-Terminus) - Product Information

Application	IHC
Primary Accession	Q7Z2W7
Reactivity	Human, Rabbit, Hamster, Monkey, Guinea Pig, Dog
Host	Rabbit
Clonality	Polyclonal
Calculated MW	128kDa KDa

TRPM8 Antibody (N-Terminus) - Additional Information**Gene ID** 79054**Other Names**

Transient receptor potential cation channel subfamily M member 8, Long transient receptor potential channel 6, LTrpC-6, LTrpC6, Transient receptor potential p8, Trp-p8, TRPM8, LTRPC6, TRPP8

Target/Specificity

Human TRPM8. BLAST analysis of the peptide immunogen showed no homology with other human proteins.

Reconstitution & Storage

Long term: -70°C; Short term: +4°C

Precautions

TRPM8 Antibody (N-Terminus) is for research use only and not for use in diagnostic or therapeutic procedures.

TRPM8 Antibody (N-Terminus) - Protein Information**Name** TRPM8**Synonyms** LTRPC6, TRPP8**Function**

Receptor-activated non-selective cation channel involved in detection of sensations such as coolness, by being activated by cold temperature below 25 degrees Celsius. Activated by icilin, eucalyptol, menthol, cold and modulation of intracellular pH. Involved in menthol sensation. Permeable for monovalent cations sodium, potassium, and cesium and divalent cation calcium. Temperature sensing is tightly linked to voltage-dependent gating. Activated upon depolarization, changes in temperature resulting in graded shifts of its voltage- dependent activation curves. The chemical agonist menthol functions as a gating modifier, shifting activation curves towards

physiological membrane potentials. Temperature sensitivity arises from a tenfold difference in the activation energies associated with voltage-dependent opening and closing. In prostate cancer cells, shows strong inward rectification and high calcium selectivity in contrast to its behavior in normal cells which is characterized by outward rectification and poor cationic selectivity. Plays a role in prostate cancer cell migration (PubMed:25559186). Isoform 2 and isoform 3 negatively regulate menthol- and cold-induced channel activity by stabilizing the closed state of the channel.

Cellular Location

Cell membrane; Multi-pass membrane protein. Membrane raft. Endoplasmic reticulum membrane. Note=Localizes to membrane rafts but is also located in the cell membrane outside of these regions where channel response to cold is enhanced compared to membrane rafts (By similarity). Located in the endoplasmic reticulum in prostate cancer cells.

Tissue Location

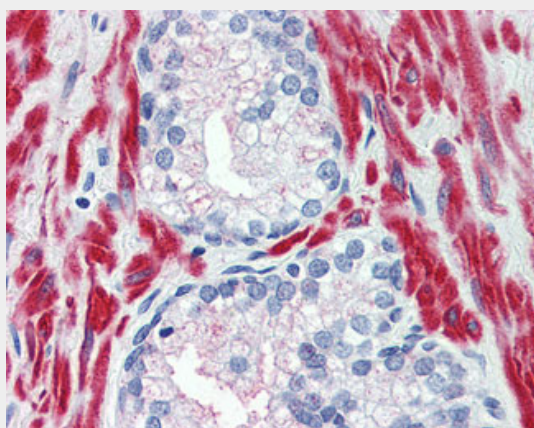
Expressed in prostate. Also expressed in prostate tumors and in non-prostatic primary tumors such as colon, lung, breast and skin tumors.

TRPM8 Antibody (N-Terminus) - Protocols

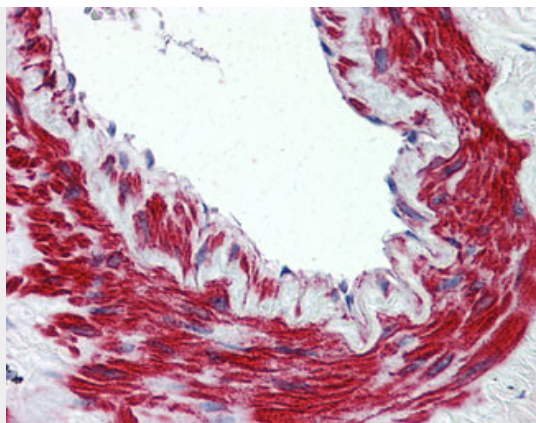
Provided below are standard protocols that you may find useful for product applications.

- [Western Blot](#)
- [Blocking Peptides](#)
- [Dot Blot](#)
- [Immunohistochemistry](#)
- [Immunofluorescence](#)
- [Immunoprecipitation](#)
- [Flow Cytometry](#)
- [Cell Culture](#)

TRPM8 Antibody (N-Terminus) - Images



Anti-TRPM8 antibody ALS10936 IHC of human prostate.



Anti-TRPM8 antibody ALS10936 IHC of human lung, vessel.

TRPM8 Antibody (N-Terminus) - Background

Receptor-activated non-selective cation channel involved in detection of sensations such as coolness, by being activated by cold temperature below 25 degrees Celsius. Activated by icilin, eucalyptol, menthol, cold and modulation of intracellular pH. Involved in menthol sensation. Permeable for monovalent cations sodium, potassium, and cesium and divalent cation calcium. Temperature sensing is tightly linked to voltage-dependent gating. Activated upon depolarization, changes in temperature resulting in graded shifts of its voltage-dependent activation curves. The chemical agonist menthol functions as a gating modifier, shifting activation curves towards physiological membrane potentials. Temperature sensitivity arises from a tenfold difference in the activation energies associated with voltage-dependent opening and closing. In prostate cancer cells, shows strong inward rectification and high calcium selectivity in contrast to its behavior in normal cells which is characterized by outward rectification and poor cationic selectivity. Isoform 2 and isoform 3 negatively regulate menthol- and cold-induced channel activity by stabilizing the closed state of the channel.

TRPM8 Antibody (N-Terminus) - References

Tsavalier L., et al. Cancer Res. 61:3760-3769(2001).
Thebault S., et al. J. Biol. Chem. 280:39423-39435(2005).
Bidaux G., et al. J. Biol. Chem. 287:2948-2962(2012).
Hillier L.W., et al. Nature 434:724-731(2005).
Mural R.J., et al. Submitted (JUL-2005) to the EMBL/GenBank/DDBJ databases.