

**UCHL3 Antibody (Internal)**  
**Rabbit Polyclonal Antibody**  
**Catalog # ALS10994****Specification**

---

**UCHL3 Antibody (Internal) - Product Information**

Application	IHC
Primary Accession	<a href="#">P15374</a>
Reactivity	Human, Mouse, Chicken, Dog
Host	Rabbit
Clonality	Polyclonal
Calculated MW	26kDa KDa

**UCHL3 Antibody (Internal) - Additional Information****Gene ID** 7347**Other Names**

Ubiquitin carboxyl-terminal hydrolase isozyme L3, UCH-L3, 3.4.19.12, Ubiquitin thioesterase L3, UCHL3

**Target/Specificity**

Human UCHL3. BLAST analysis of the peptide immunogen showed no homology with other human proteins.

**Reconstitution & Storage**

Long term: -70°C; Short term: +4°C

**Precautions**

UCHL3 Antibody (Internal) is for research use only and not for use in diagnostic or therapeutic procedures.

**UCHL3 Antibody (Internal) - Protein Information****Name** UCHL3**Function**

Deubiquitinating enzyme (DUB) that controls levels of cellular ubiquitin through processing of ubiquitin precursors and ubiquitinated proteins. Thiol protease that recognizes and hydrolyzes a peptide bond at the C-terminal glycine of either ubiquitin or NEDD8. Has a 10-fold preference for Arg and Lys at position P3", and exhibits a preference towards 'Lys-48'-linked ubiquitin chains. Deubiquitinates ENAC in apical compartments, thereby regulating apical membrane recycling. Indirectly increases the phosphorylation of IGFIR, AKT and FOXO1 and promotes insulin-signaling and insulin-induced adipogenesis. Required for stress-response retinal, skeletal muscle and germ cell maintenance. May be involved in working memory. Can hydrolyze UBB(+1), a mutated form of ubiquitin which is not effectively degraded by the proteasome and is associated with neurodegenerative disorders.

**Cellular Location**

Cytoplasm.

**Tissue Location**

Highly expressed in heart, skeletal muscle, and testis.

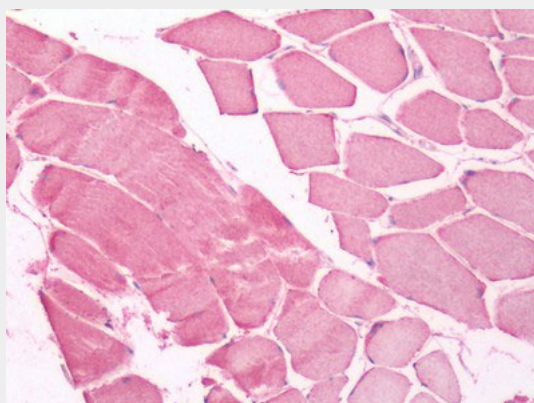
**Volume**

50  $\mu$ l

**UCHL3 Antibody (Internal) - Protocols**

Provided below are standard protocols that you may find useful for product applications.

- [Western Blot](#)
- [Blocking Peptides](#)
- [Dot Blot](#)
- [Immunohistochemistry](#)
- [Immunofluorescence](#)
- [Immunoprecipitation](#)
- [Flow Cytometry](#)
- [Cell Culture](#)

**UCHL3 Antibody (Internal) - Images**

Human Skeletal Muscle: Formalin-Fixed, Paraffin-Embedded (FFPE)

**UCHL3 Antibody (Internal) - Background**

Deubiquitinating enzyme (DUB) that controls levels of cellular ubiquitin through processing of ubiquitin precursors and ubiquitinated proteins. Thiol protease that recognizes and hydrolyzes a peptide bond at the C-terminal glycine of either ubiquitin or NEDD8. Has a 10-fold preference for Arg and Lys at position P3", and exhibits a preference towards 'Lys-48'-linked Ubiquitin chains. Deubiquitinates ENAC in apical compartments, thereby regulating apical membrane recycling. Indirectly increases the phosphorylation of IGFIR, AKT and FOXO1 and promotes insulin- signaling and insulin-induced adipogenesis. Required for stress- response retinal, skeletal muscle and germ cell maintenance. May be involved in working memory. Can hydrolyze UBB(+1), a mutated form of ubiquitin which is not effectively degraded by the proteasome and is associated with neurodegenerative disorders.

**UCHL3 Antibody (Internal) - References**

Wilkinson K.D.,et al.Science 246:670-673(1989).  
Kalnine N.,et al.Submitted (MAY-2003) to the EMBL/GenBank/DDBJ databases.  
Ebert L.,et al.Submitted (JUN-2004) to the EMBL/GenBank/DDBJ databases.  
Ota T.,et al.Nat. Genet. 36:40-45(2004).  
Dunham A.,et al.Nature 428:522-528(2004).