

**SRPX2 Antibody (Internal)**  
**Rabbit Polyclonal Antibody**  
**Catalog # ALS11097****Specification**

---

**SRPX2 Antibody (Internal) - Product Information**

Application	IHC
Primary Accession	<a href="#">O60687</a>
Reactivity	Human, Mouse, Rabbit, Monkey, Pig, Horse, Bovine, Guinea Pig, Dog
Host	Rabbit
Clonality	Polyclonal
Calculated MW	53kDa KDa

**SRPX2 Antibody (Internal) - Additional Information****Gene ID** 27286**Other Names**

Sushi repeat-containing protein SRPX2, Sushi-repeat protein upregulated in leukemia, SRPX2, SRPUL

**Target/Specificity**

Human SRPX2. BLAST analysis of the peptide immunogen showed no homology with other human proteins.

**Reconstitution & Storage**

Long term: -70°C; Short term: +4°C

**Precautions**

SRPX2 Antibody (Internal) is for research use only and not for use in diagnostic or therapeutic procedures.

**SRPX2 Antibody (Internal) - Protein Information****Name** SRPX2**Synonyms** SRPUL**Function**

Acts as a ligand for the urokinase plasminogen activator surface receptor. Plays a role in angiogenesis by inducing endothelial cell migration and the formation of vascular network (cords). Involved in cellular migration and adhesion. Increases the phosphorylation levels of FAK. Interacts with and increases the mitogenic activity of HGF. Promotes synapse formation. May have a role in the perisylvian region, critical for language and cognitive development.

**Cellular Location**

Secreted. Cytoplasm. Cell surface. Synapse

**Tissue Location**

Expressed in neurons of the rolandic area of the brain (at protein level). Highly expressed in the brain, placenta, lung, trachea, uterus, adrenal gland, heart, ovary and placenta. Weakly expressed in the peripheral blood, brain and bone marrow. Expressed in numerous cancer cell lines and in gastrointestinal cancer cells. Higher levels found in colorectal cancers than in normal colonic mucosa

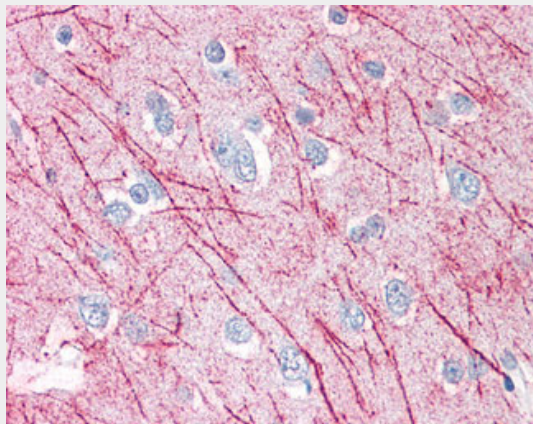
**Volume**

250 µl

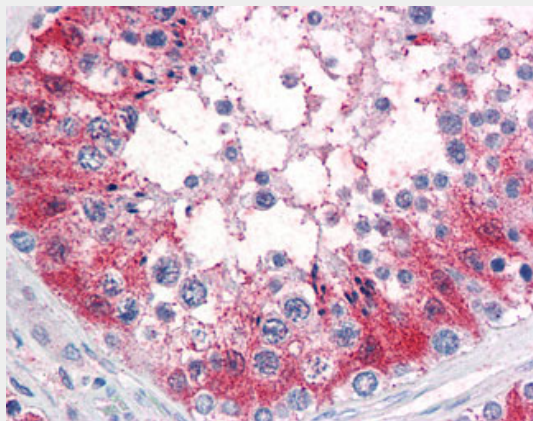
**SRPX2 Antibody (Internal) - Protocols**

Provided below are standard protocols that you may find useful for product applications.

- [Western Blot](#)
- [Blocking Peptides](#)
- [Dot Blot](#)
- [Immunohistochemistry](#)
- [Immunofluorescence](#)
- [Immunoprecipitation](#)
- [Flow Cytometry](#)
- [Cell Culture](#)

**SRPX2 Antibody (Internal) - Images**

Anti-SRPX2 antibody ALS11097 IHC of human brain, cortex.



Anti-SRPX2 antibody ALS11097 IHC of human testis.

#### **SRPX2 Antibody (Internal) - Background**

Acts as a ligand for the urokinase plasminogen activator surface receptor. Plays a role in angiogenesis by inducing endothelial cell migration and the formation of vascular network (cords). Involved in cellular migration and adhesion. Increases the phosphorylation levels of FAK. Interacts with and increases the mitogenic activity of HGF. Promotes synapse formation. May have a role in the perisylvian region, critical for language and cognitive development.

#### **SRPX2 Antibody (Internal) - References**

Kurosawa H.,et al.Blood 93:321-332(1999).  
Huang C.-H.,et al.Submitted (JUN-2001) to the EMBL/GenBank/DDBJ databases.  
Otsuki T.,et al.DNA Res. 12:117-126(2005).  
Ross M.T.,et al.Nature 434:325-337(2005).  
Roll P.,et al.Hum. Mol. Genet. 15:1195-1207(2006).