

**MARK1 / MARK Antibody (Internal)**  
**Rabbit Polyclonal Antibody**  
**Catalog # ALS11114****Specification**

---

**MARK1 / MARK Antibody (Internal) - Product Information**

Application	IHC
Primary Accession	<a href="#">Q9P0L2</a>
Reactivity	Human, Rabbit, Monkey
Host	Rabbit
Clonality	Polyclonal
Calculated MW	89kDa KDa

**MARK1 / MARK Antibody (Internal) - Additional Information****Gene ID** 4139**Other Names**

Serine/threonine-protein kinase MARK1, 2.7.11.1, 2.7.11.26, MAP/microtubule affinity-regulating kinase 1, PAR1 homolog c, Par-1c, Par1c, MARK1 ([http://www.genenames.org/cgi-bin/gene\\_symbol\\_report?hgnc\\_id=6896](http://www.genenames.org/cgi-bin/gene_symbol_report?hgnc_id=6896))  
HGNC:6896

**Target/Specificity**

Human MARK1. BLAST analysis of the peptide immunogen showed no homology with other human proteins.

**Reconstitution & Storage**

Long term: -70°C; Short term: +4°C

**Precautions**

MARK1 / MARK Antibody (Internal) is for research use only and not for use in diagnostic or therapeutic procedures.

**MARK1 / MARK Antibody (Internal) - Protein Information****Name** MARK1 ([HGNC:6896](#))**Function**

Serine/threonine-protein kinase (PubMed:<http://www.uniprot.org/citations/23666762>). Involved in cell polarity and microtubule dynamics regulation. Phosphorylates DCX, MAP2 and MAP4. Phosphorylates the microtubule-associated protein MAPT/TAU (PubMed:<http://www.uniprot.org/citations/23666762>). Involved in cell polarity by phosphorylating the microtubule-associated proteins MAP2, MAP4 and MAPT/TAU at KXGS motifs, causing detachment from microtubules, and their disassembly. Involved in the regulation of neuronal migration through its dual activities in regulating cellular polarity and microtubule dynamics, possibly by phosphorylating and regulating DCX. Also acts as a positive regulator of the Wnt signaling

pathway, probably by mediating phosphorylation of dishevelled proteins (DVL1, DVL2 and/or DVL3).

**Cellular Location**

Cell membrane; Peripheral membrane protein. Cytoplasm, cytoskeleton. Cytoplasm Cell projection, dendrite. Note=Appears to localize to an intracellular network.

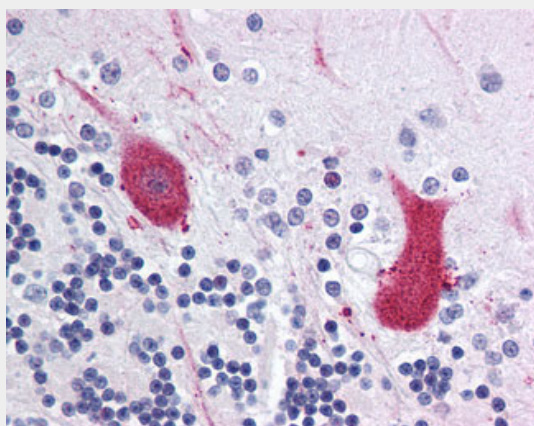
**Tissue Location**

Highly expressed in heart, skeletal muscle, brain, fetal brain and fetal kidney.

**MARK1 / MARK Antibody (Internal) - Protocols**

Provided below are standard protocols that you may find useful for product applications.

- [Western Blot](#)
- [Blocking Peptides](#)
- [Dot Blot](#)
- [Immunohistochemistry](#)
- [Immunofluorescence](#)
- [Immunoprecipitation](#)
- [Flow Cytometry](#)
- [Cell Culture](#)

**MARK1 / MARK Antibody (Internal) - Images**

Anti-MARK1 antibody ALS11114 IHC of human brain, cerebellum.

**MARK1 / MARK Antibody (Internal) - Background**

Serine/threonine-protein kinase involved in cell polarity and microtubule dynamics regulation. Phosphorylates DCX, MAP2, MAP4 and MAPT/TAU. Involved in cell polarity by phosphorylating the microtubule-associated proteins MAP2, MAP4 and MAPT/TAU at KXGS motifs, causing detachment from microtubules, and their disassembly. Involved in the regulation of neuronal migration through its dual activities in regulating cellular polarity and microtubule dynamics, possibly by phosphorylating and regulating DCX. Also acts as a positive regulator of the Wnt signaling pathway, probably by mediating phosphorylation of dishevelled proteins (DVL1, DVL2 and/or DVL3).

**MARK1 / MARK Antibody (Internal) - References**

Lizcano J.M., et al. EMBO J. 23:833-843(2004).

Zhou H.J., et al. Submitted (MAY-1999) to the EMBL/GenBank/DDBJ databases.

Nagase T.,et al.DNA Res. 7:143-150(2000).  
Ota T.,et al.Nat. Genet. 36:40-45(2004).  
Gregory S.G.,et al.Nature 441:315-321(2006).