

**WNT10B Antibody (Internal)**  
**Rabbit Polyclonal Antibody**  
**Catalog # ALS11137****Specification**

---

**WNT10B Antibody (Internal) - Product Information**

Application	IHC
Primary Accession	<a href="#">O00744</a>
Reactivity	Human, Mouse, Rabbit, Monkey, Pig, Horse, Dog
Host	Rabbit
Clonality	Polyclonal
Calculated MW	43kDa KDa

**WNT10B Antibody (Internal) - Additional Information****Gene ID** 7480**Other Names**

Protein Wnt-10b, Protein Wnt-12, WNT10B, WNT12

**Target/Specificity**

Human WNT10B. BLAST analysis of the peptide immunogen showed no homology with other human proteins.

**Reconstitution & Storage**

Long term: -70°C; Short term: +4°C

**Precautions**

WNT10B Antibody (Internal) is for research use only and not for use in diagnostic or therapeutic procedures.

**WNT10B Antibody (Internal) - Protein Information****Name** WNT10B**Synonyms** WNT12**Function**

Member of the Wnt ligand gene family that encodes for secreted proteins, which activate the Wnt signaling cascade. Specifically activates canonical Wnt/beta-catenin signaling and thus triggers beta-catenin/LEF/TCF-mediated transcriptional programs. Involved in signaling networks controlling stemness, pluripotency and cell fate decisions. Acts in the immune system, mammary gland, adipose tissue, bone and skin.

**Cellular Location**

Secreted, extracellular space, extracellular matrix. Secreted

**Tissue Location**

Detected in most adult tissues. Highest levels were found in heart and skeletal muscle. Low levels are found in brain

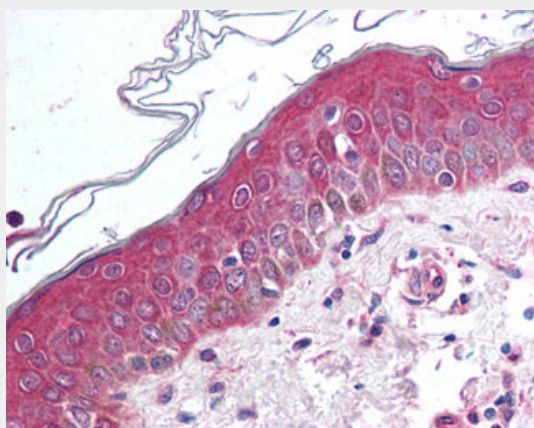
**Volume**

50 µl

**WNT10B Antibody (Internal) - Protocols**

Provided below are standard protocols that you may find useful for product applications.

- [Western Blot](#)
- [Blocking Peptides](#)
- [Dot Blot](#)
- [Immunohistochemistry](#)
- [Immunofluorescence](#)
- [Immunoprecipitation](#)
- [Flow Cytometry](#)
- [Cell Culture](#)

**WNT10B Antibody (Internal) - Images**

Anti-WNT10B antibody ALS11137 IHC of human skin.

**WNT10B Antibody (Internal) - Background**

Ligand for members of the frizzled family of seven transmembrane receptors. Probable developmental protein. May be a signaling molecule which affects the development of discrete regions of tissues. Is likely to signal over only few cell diameters (By similarity).

**WNT10B Antibody (Internal) - References**

Hardiman G., et al. Cytogenet. Cell Genet. 77:278-282(1997).  
Saitoh T., et al. Int. J. Oncol. 19:1187-1192(2001).  
Ota T., et al. Nat. Genet. 36:40-45(2004).  
Scherer S.E., et al. Nature 440:346-351(2006).  
Mural R.J., et al. Submitted (JUL-2005) to the EMBL/GenBank/DDBJ databases.