

**ENPP3 / CD203c Antibody (Internal)**  
**Rabbit Polyclonal Antibody**  
**Catalog # ALS11172****Specification**

---

**ENPP3 / CD203c Antibody (Internal) - Product Information**

Application	IHC
Primary Accession	<a href="#">O14638</a>
Reactivity	Human, Monkey, Dog
Host	Rabbit
Clonality	Polyclonal
Calculated MW	100kDa KDa

**ENPP3 / CD203c Antibody (Internal) - Additional Information****Gene ID** 5169**Other Names**

Ectonucleotide pyrophosphatase/phosphodiesterase family member 3, E-NPP 3, Phosphodiesterase I beta, PD-Ibeta, Phosphodiesterase I/nucleotide pyrophosphatase 3, CD203c, Alkaline phosphodiesterase I, 3.1.4.1, Nucleotide pyrophosphatase, NPPase, 3.6.1.9, ENPP3, PDNP3

**Target/Specificity**

Human ENPP3. BLAST analysis of the peptide immunogen showed no homology with other human proteins.

**Reconstitution & Storage**

Long term: -70°C; Short term: +4°C

**Precautions**

ENPP3 / CD203c Antibody (Internal) is for research use only and not for use in diagnostic or therapeutic procedures.

**ENPP3 / CD203c Antibody (Internal) - Protein Information****Name** ENPP3**Synonyms** PDNP3 {ECO:0000303|PubMed:9344668}**Function**

Hydrolase that metabolizes extracellular nucleotides, including ATP, GTP, UTP and CTP (PubMed:<a href="http://www.uniprot.org/citations/29717535" target="\_blank">29717535</a>). Limits mast cell and basophil responses during inflammation and during the chronic phases of allergic responses by eliminating the extracellular ATP that functions as signaling molecule and activates basophils and mast cells and induces the release of inflammatory cytokines. Metabolizes extracellular ATP in the lumen of the small intestine, and thereby prevents ATP-induced apoptosis of intestinal plasmacytoid dendritic cells (By similarity). Has also alkaline phosphodiesterase activity (PubMed:<a href="http://www.uniprot.org/citations/11342463" target="\_blank">11342463</a>)

target="\_blank">11342463</a>).

**Cellular Location**

Cell membrane; Single-pass type II membrane protein. Apical cell membrane; Single-pass type II membrane protein. Secreted Note=Detected at the cell surface of basophils (PubMed:11342463) Detected at the apical plasma membrane of bile duct cells (PubMed:15072822). Located to the apical surface in intestinal and kidney epithelial cells. Secreted in serum, and in lumen of epithelial cells.

**Tissue Location**

Detected on bile ducts in liver, and in blood serum (at protein level) (PubMed:15072822). Detected in prostate and uterus (PubMed:9344668). Detected on basophils, but not neutrophils (PubMed:11342463).

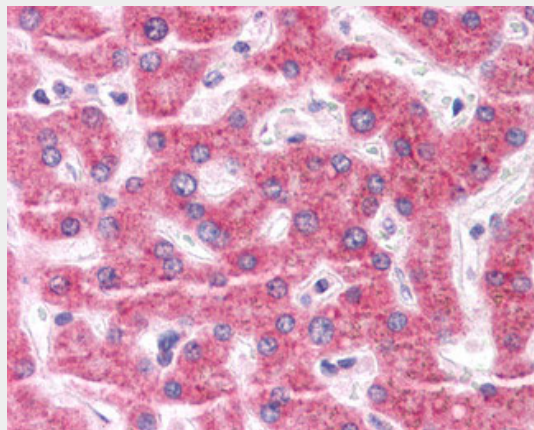
**Volume**

50 µl

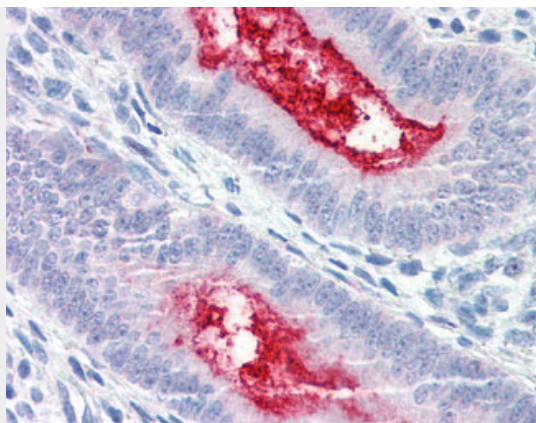
**ENPP3 / CD203c Antibody (Internal) - Protocols**

Provided below are standard protocols that you may find useful for product applications.

- [Western Blot](#)
- [Blocking Peptides](#)
- [Dot Blot](#)
- [Immunohistochemistry](#)
- [Immunofluorescence](#)
- [Immunoprecipitation](#)
- [Flow Cytometry](#)
- [Cell Culture](#)

**ENPP3 / CD203c Antibody (Internal) - Images**

Anti-ENPP3 antibody ALS11172 IHC of human liver.



Anti-ENPP3 antibody ALS11172 IHC of human uterus.

#### **ENPP3 / CD203c Antibody (Internal) - Background**

Cleaves a variety of phosphodiester and phosphosulfate bonds including deoxynucleotides, nucleotide sugars, and NAD.

#### **ENPP3 / CD203c Antibody (Internal) - References**

- Piao J.-H.,et al.Genomics 45:412-415(1997).  
Bechtel S.,et al.BMC Genomics 8:399-399(2007).  
Mungall A.J.,et al.Nature 425:805-811(2003).  
Mural R.J.,et al.Submitted (SEP-2005) to the EMBL/GenBank/DDBJ databases.  
Buehring H.J.,et al.Blood 97:3303-3305(2001).