

**C4.4A / LYPD3 Antibody (C-Terminus)**  
**Rabbit Polyclonal Antibody**  
**Catalog # ALS11179****Specification**

---

**C4.4A / LYPD3 Antibody (C-Terminus) - Product Information**

|                   |                        |
|-------------------|------------------------|
| Application       | IHC                    |
| Primary Accession | <a href="#">O95274</a> |
| Reactivity        | Human                  |
| Host              | Rabbit                 |
| Clonality         | Polyclonal             |
| Calculated MW     | 36kDa KDa              |

**C4.4A / LYPD3 Antibody (C-Terminus) - Additional Information****Gene ID** 27076**Other Names**

Ly6/PLAUR domain-containing protein 3, GPI-anchored metastasis-associated protein C4.4A homolog, Matrigel-induced gene C4 protein, MIG-C4, LYPD3, C4.4A

**Target/Specificity**

Human LYPD3. BLAST analysis of the peptide immunogen showed no homology with other human proteins.

**Reconstitution & Storage**

Long term: -70°C; Short term: +4°C

**Precautions**

C4.4A / LYPD3 Antibody (C-Terminus) is for research use only and not for use in diagnostic or therapeutic procedures.

**C4.4A / LYPD3 Antibody (C-Terminus) - Protein Information****Name** LYPD3**Synonyms** C4.4A**Function**

Supports cell migration. May be involved in urothelial cell- matrix interactions. May be involved in tumor progression.

**Cellular Location**

Cell membrane; Lipid-anchor, GPI-anchor.

**Tissue Location**

Expressed in placenta, skin and urothelium. Found in suprabasal keratinocytes of chronic wounds. Weak expression is found in esophagus and peripheral blood mononuclear cells. Found in the

majority of primary and metastatic transitional cell carcinomas (TCCs) and as well in breast cancer tissues, but not in adjacent normal tissues. High expression is found in the tumor component of some noninvasive superficial lesions and in invasive and metastatic urothelial cancers.

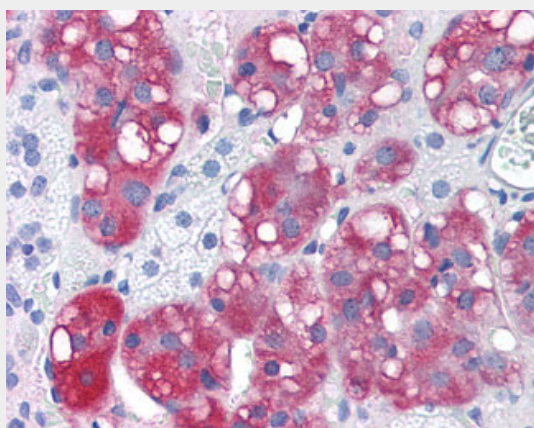
**Volume**  
50  $\mu$ l

#### **C4.4A / LYPD3 Antibody (C-Terminus) - Protocols**

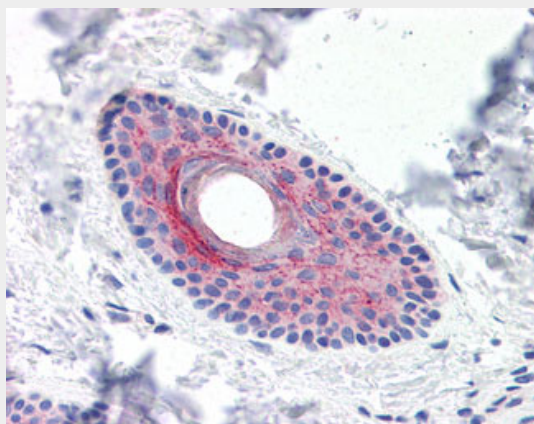
Provided below are standard protocols that you may find useful for product applications.

- [Western Blot](#)
- [Blocking Peptides](#)
- [Dot Blot](#)
- [Immunohistochemistry](#)
- [Immunofluorescence](#)
- [Immunoprecipitation](#)
- [Flow Cytometry](#)
- [Cell Culture](#)

#### **C4.4A / LYPD3 Antibody (C-Terminus) - Images**



Anti-LYPD3 antibody ALS11179 IHC of human adrenal.



Anti-LYPD3 antibody ALS11179 IHC of human skin, hair follicle.

#### **C4.4A / LYPD3 Antibody (C-Terminus) - Background**

Supports cell migration. May be involved in urothelial cell-matrix interactions. May be involved in tumor progression.

#### **C4.4A / LYPD3 Antibody (C-Terminus) - References**

Smith B.A.,et al.Cancer Res. 61:1678-1685(2001).  
Wuerfel J.,et al.Gene 262:35-41(2001).  
Clark H.F.,et al.Genome Res. 13:2265-2270(2003).  
Grimwood J.,et al.Nature 428:529-535(2004).  
Hansen L.V.,et al.Biochem. Eng. J. 380:845-857(2004).