

LRP6 Antibody (Internal)
Goat Polyclonal Antibody
Catalog # ALS11205**Specification**

LRP6 Antibody (Internal) - Product Information

| | |
|-------------------|--|
| Application | IHC |
| Primary Accession | O75581 |
| Reactivity | Human, Rat, Rabbit, Hamster, Monkey, Pig, Horse, Dog |
| Host | Goat |
| Clonality | Polyclonal |
| Calculated MW | 180kDa KDa |

LRP6 Antibody (Internal) - Additional Information**Gene ID** 4040**Other Names**

Low-density lipoprotein receptor-related protein 6, LRP-6, LRP6

Target/Specificity

Human LRP6. This antibody is expected to recognise an epitope corresponding to aa 1546-1560 of human LRP6 protein.

Reconstitution & Storage

Store at -20°C. Minimize freezing and thawing.

Precautions

LRP6 Antibody (Internal) is for research use only and not for use in diagnostic or therapeutic procedures.

LRP6 Antibody (Internal) - Protein Information**Name** LRP6**Function**

Component of the Wnt-Fzd-LRP5-LRP6 complex that triggers beta-catenin signaling through inducing aggregation of receptor-ligand complexes into ribosome-sized signalosomes. Cell-surface coreceptor of Wnt/beta-catenin signaling, which plays a pivotal role in bone formation. The Wnt-induced Fzd/LRP6 coreceptor complex recruits DVL1 polymers to the plasma membrane which, in turn, recruits the AXIN1/GSK3B-complex to the cell surface promoting the formation of signalosomes and inhibiting AXIN1/GSK3-mediated phosphorylation and destruction of beta-catenin. Required for posterior patterning of the epiblast during gastrulation (By similarity).

Cellular Location

Cell membrane; Single-pass type I membrane protein. Endoplasmic reticulum. Membrane raft. Note=On Wnt signaling, undergoes a cycle of caveolin- or clathrin-mediated endocytosis and

plasma membrane location. Released from the endoplasmic reticulum on palmitoylation. Mono-ubiquitination retains it in the endoplasmic reticulum in the absence of palmitoylation. On Wnt signaling, phosphorylated, aggregates and colocalizes with AXIN1 and GSK3B at the plasma membrane in LRP6- signalosomes. Chaperoned to the plasma membrane by MESD (By similarity).

Tissue Location

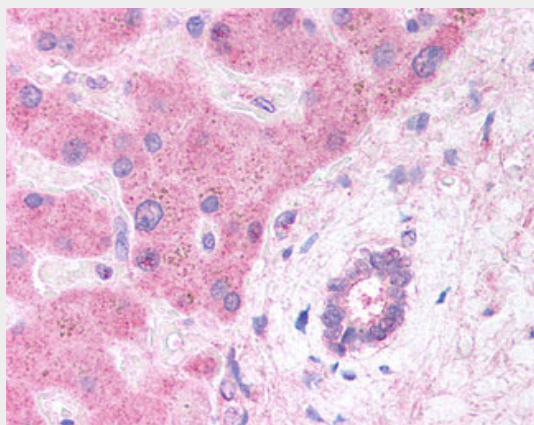
Widely coexpressed with LRP5 during embryogenesis and in adult tissues

LRP6 Antibody (Internal) - Protocols

Provided below are standard protocols that you may find useful for product applications.

- [Western Blot](#)
- [Blocking Peptides](#)
- [Dot Blot](#)
- [Immunohistochemistry](#)
- [Immunofluorescence](#)
- [Immunoprecipitation](#)
- [Flow Cytometry](#)
- [Cell Culture](#)

LRP6 Antibody (Internal) - Images



Anti-LRP6 antibody IHC of human hepatocytes and bile duct.

LRP6 Antibody (Internal) - Background

Component of the Wnt-Fzd-LRP5-LRP6 complex that triggers beta-catenin signaling through inducing aggregation of receptor- ligand complexes into ribosome-sized signalsomes. Cell-surface coreceptor of Wnt/beta-catenin signaling, which plays a pivotal role in bone formation. The Wnt-induced Fzd/LRP6 coreceptor complex recruits DVL1 polymers to the plasma membrane which, in turn, recruits the AXIN1/GSK3B-complex to the cell surface promoting the formation of signalsomes and inhibiting AXIN1/GSK3- mediated phosphorylation and destruction of beta-catenin. Required for posterior patterning of the epiblast during gastrulation (By similarity).

LRP6 Antibody (Internal) - References

Brown S.D.,et al.Biochem. Biophys. Res. Commun. 248:879-888(1998).
Scherer S.E.,et al.Nature 440:346-351(2006).
Semenov M.V.,et al.Curr. Biol. 11:951-961(2001).
Mao B.,et al.Nature 411:321-325(2001).

Caricasole A., et al. J. Biol. Chem. 278:37024-37031(2003).