

**HP / Haptoglobin Antibody**  
**Rabbit Polyclonal Antibody**  
**Catalog # ALS11217****Specification**

---

**HP / Haptoglobin Antibody - Product Information**

|                   |                        |
|-------------------|------------------------|
| Application       | IHC                    |
| Primary Accession | <a href="#">P00738</a> |
| Reactivity        | Human                  |
| Host              | Rabbit                 |
| Clonality         | Polyclonal             |
| Calculated MW     | 45kDa KDa              |

**HP / Haptoglobin Antibody - Additional Information****Gene ID** 3240**Other Names**

Haptoglobin, Zonulin, Haptoglobin alpha chain, Haptoglobin beta chain, HP

**Target/Specificity**

Human Haptoglobin.

**Reconstitution & Storage**

Store vial at -20 C prior to opening. This product is stable for several weeks at 4 C as an undiluted liquid. Dilute only prior to immediate use. For extended storage aliquot contents and freeze at -20 C or below. Avoid cycles of freezing and thawing.

**Precautions**

HP / Haptoglobin Antibody is for research use only and not for use in diagnostic or therapeutic procedures.

**HP / Haptoglobin Antibody - Protein Information****Name** HP**Function**

As a result of hemolysis, hemoglobin is found to accumulate in the kidney and is secreted in the urine. Haptoglobin captures, and combines with free plasma hemoglobin to allow hepatic recycling of heme iron and to prevent kidney damage. Haptoglobin also acts as an antioxidant, has antibacterial activity, and plays a role in modulating many aspects of the acute phase response. Hemoglobin/haptoglobin complexes are rapidly cleared by the macrophage CD163 scavenger receptor expressed on the surface of liver Kupfer cells through an endocytic lysosomal degradation pathway.

**Cellular Location**

Secreted.

**Tissue Location**

Expressed by the liver and secreted in plasma.

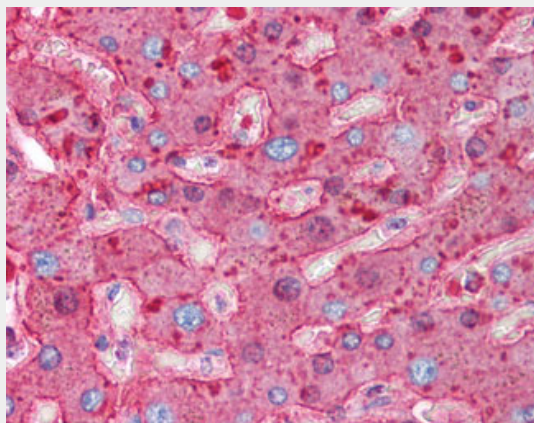
**Volume**

50 µl

**HP / Haptoglobin Antibody - Protocols**

Provided below are standard protocols that you may find useful for product applications.

- [Western Blot](#)
- [Blocking Peptides](#)
- [Dot Blot](#)
- [Immunohistochemistry](#)
- [Immunofluorescence](#)
- [Immunoprecipitation](#)
- [Flow Cytometry](#)
- [Cell Culture](#)

**HP / Haptoglobin Antibody - Images**

Anti-Haptoglobin antibody IHC of human liver.

**HP / Haptoglobin Antibody - Background**

As a result of hemolysis, hemoglobin is found to accumulate in the kidney and is secreted in the urine. Haptoglobin captures, and combines with free plasma hemoglobin to allow hepatic recycling of heme iron and to prevent kidney damage. Haptoglobin also acts as an Antimicrobial; Antioxidant, has antibacterial activity and plays a role in modulating many aspects of the acute phase response. Hemoglobin/haptoglobin complexes are rapidly cleared by the macrophage CD163 scavenger receptor expressed on the surface of liver Kupfer cells through an endocytic lysosomal degradation pathway.

**HP / Haptoglobin Antibody - References**

- van der Straten A., et al. EMBO J. 2:1003-1007(1983).  
Yang F., et al. Proc. Natl. Acad. Sci. U.S.A. 80:5875-5879(1983).  
van der Straten A., et al. FEBS Lett. 168:103-107(1984).  
Brune J.L., et al. Nucleic Acids Res. 12:4531-4538(1984).  
Bensi G., et al. EMBO J. 4:119-126(1985).

