

MYL12A / MRCL3 Antibody (phospho-Ser19)
Rabbit Polyclonal Antibody
Catalog # ALS11234**Specification**

MYL12A / MRCL3 Antibody (phospho-Ser19) - Product Information

Application	IHC
Primary Accession	P19105
Reactivity	Human
Host	Rabbit
Clonality	Polyclonal
Calculated MW	20kDa KDa

MYL12A / MRCL3 Antibody (phospho-Ser19) - Additional Information**Gene ID** 10627**Other Names**

Myosin regulatory light chain 12A, Epididymis secretory protein Li 24, HEL-S-24, MLC-2B, Myosin RLC, Myosin regulatory light chain 2, nonsarcomeric, Myosin regulatory light chain MRLC3, MYL12A, MLCB, MRLC3, RLC

Target/Specificity

Human Myosin Light Chain phospho peptide corresponding to a region of the human smooth/non-muscle form of myosin regulatory light chain conjugated to Keyhole Limpet Hemocyanin (KLH).

Reconstitution & Storage

+4°C or -20°C, Avoid repeated freezing and thawing.

Precautions

MYL12A / MRCL3 Antibody (phospho-Ser19) is for research use only and not for use in diagnostic or therapeutic procedures.

MYL12A / MRCL3 Antibody (phospho-Ser19) - Protein Information**Name** MYL12A**Synonyms** MLCB, MRLC3, RLC**Function**

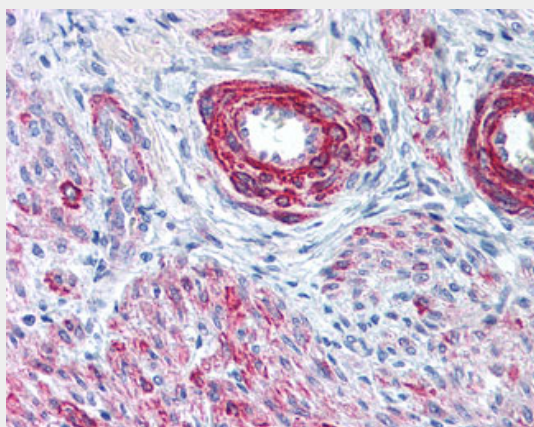
Myosin regulatory subunit that plays an important role in regulation of both smooth muscle and nonmuscle cell contractile activity via its phosphorylation. Implicated in cytokinesis, receptor capping, and cell locomotion (By similarity).

MYL12A / MRCL3 Antibody (phospho-Ser19) - Protocols

Provided below are standard protocols that you may find useful for product applications.

- [Western Blot](#)
- [Blocking Peptides](#)
- [Dot Blot](#)
- [Immunohistochemistry](#)
- [Immunofluorescence](#)
- [Immunoprecipitation](#)
- [Flow Cytometry](#)
- [Cell Culture](#)

MYL12A / MRCL3 Antibody (phospho-Ser19) - Images



Anti-MYL9 antibody IHC staining of human uterus.

MYL12A / MRCL3 Antibody (phospho-Ser19) - Background

Myosin regulatory subunit that plays an important role in regulation of both smooth muscle and nonmuscle cell contractile activity via its phosphorylation. Implicated in cytokinesis, receptor capping, and cell locomotion (By similarity).

MYL12A / MRCL3 Antibody (phospho-Ser19) - References

- Grant J.W.,et al.Nucleic Acids Res. 18:5892-5892(1990).
Iwasaki T.,et al.Cell Struct. Funct. 26:677-683(2001).
Li J.Y.,et al.Submitted (JAN-2014) to the EMBL/GenBank/DDBJ databases.
Ota T.,et al.Nat. Genet. 36:40-45(2004).
Mural R.J.,et al.Submitted (SEP-2005) to the EMBL/GenBank/DDBJ databases.