

**CENPU / MLF1IP Antibody (phospho-Thr78)**  
**Rabbit Polyclonal Antibody**  
**Catalog # ALS11236****Specification**

---

**CENPU / MLF1IP Antibody (phospho-Thr78) - Product Information**

Application	WB
Primary Accession	<a href="#">Q71F23</a>
Reactivity	Human, Bovine, Dog
Host	Rabbit
Clonality	Polyclonal
Calculated MW	48kDa KDa

**CENPU / MLF1IP Antibody (phospho-Thr78) - Additional Information****Gene ID** 79682**Other Names**

Centromere protein U, CENP-U, Centromere protein of 50 kDa, CENP-50, Interphase centromere complex protein 24, KSHV latent nuclear antigen-interacting protein 1, MLF1-interacting protein, Polo-box-interacting protein 1, CENPU, ICEN24, KLIP1, MLF1IP, PBIP1

**Target/Specificity**

Amino acids surrounding Thr78 of human MLF1IP protein. The immunogen peptide is phosphorylated at Thr78.

**Reconstitution & Storage**

Store vial at -20 C prior to opening. Dilute only prior to immediate use. For extended storage, aliquot contents and freeze at -20 C or below. Avoid cycles of freezing and thawing.

**Precautions**

CENPU / MLF1IP Antibody (phospho-Thr78) is for research use only and not for use in diagnostic or therapeutic procedures.

**CENPU / MLF1IP Antibody (phospho-Thr78) - Protein Information****Name** CENPU**Synonyms** ICEN24, KLIP1, MLF1IP, PBIP1**Function**

Component of the CENPA-NAC (nucleosome-associated) complex, a complex that plays a central role in assembly of kinetochore proteins, mitotic progression and chromosome segregation. The CENPA-NAC complex recruits the CENPA-CAD (nucleosome distal) complex and may be involved in incorporation of newly synthesized CENPA into centromeres. Plays an important role in the correct PLK1 localization to the mitotic kinetochores. A scaffold protein responsible for the initial recruitment and maintenance of the kinetochore PLK1 population until its degradation. Involved in transcriptional repression.

### Cellular Location

Cytoplasm. Nucleus. Chromosome, centromere, kinetochore. Note=Localizes in the kinetochore domain of centromeres Colocalizes with PLK1 at the interzone between the inner and the outer kinetochore plates

### Tissue Location

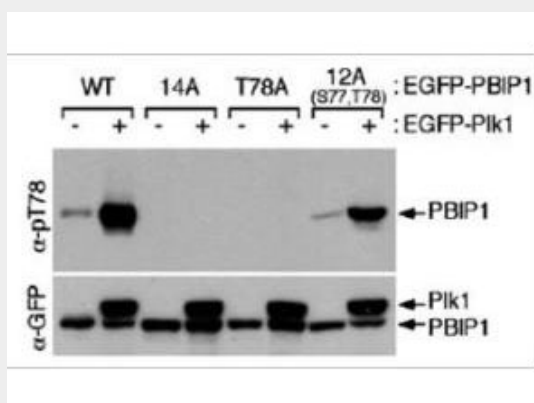
Expressed at high levels in the testis, fetal liver, thymus, bone marrow and at lower levels in the lymph nodes, placenta, colon and spleen. Present in all cell lines examined, including B-cells, T-cells, epithelial cells and fibroblast cells Expressed at high levels in glioblastoma cell lines

### CENPU / MLF1IP Antibody (phospho-Thr78) - Protocols

Provided below are standard protocols that you may find useful for product applications.

- [Western Blot](#)
- [Blocking Peptides](#)
- [Dot Blot](#)
- [Immunohistochemistry](#)
- [Immunofluorescence](#)
- [Immunoprecipitation](#)
- [Flow Cytometry](#)
- [Cell Culture](#)

### CENPU / MLF1IP Antibody (phospho-Thr78) - Images



Anti-MLF1IP pT78 Antibody - Western Blot.

### CENPU / MLF1IP Antibody (phospho-Thr78) - Background

Component of the CENPA-NAC (nucleosome-associated) complex, a complex that plays a central role in assembly of kinetochore proteins, mitotic progression and chromosome segregation. The CENPA-NAC complex recruits the CENPA-CAD (nucleosome distal) complex and may be involved in incorporation of newly synthesized CENPA into centromeres. Plays an important role in the correct PLK1 localization to the mitotic kinetochores. A scaffold protein responsible for the initial recruitment and maintenance of the kinetochore PLK1 population until its degradation. Involved in transcriptional repression.

### CENPU / MLF1IP Antibody (phospho-Thr78) - References

Pan H.-Y.,et al.J. Virol. 77:9758-9768(2003).  
Hanissian S.H.,et al.Oncogene 23:3700-3707(2004).

Ota T.,et al.Nat. Genet. 36:40-45(2004).

Ebert L.,et al.Submitted (JUN-2004) to the EMBL/GenBank/DDBJ databases.

Hanissian S.H.,et al.Submitted (AUG-2006) to the EMBL/GenBank/DDBJ databases.