

GLI3 Antibody (aa41-57)
Rabbit Polyclonal Antibody
Catalog # ALS11238**Specification**

GLI3 Antibody (aa41-57) - Product Information

Application	IHC, IF
Primary Accession	P10071
Reactivity	Human, Chicken, Quail, Xenopus, Dog
Host	Rabbit
Clonality	Polyclonal
Calculated MW	170kDa KDa

GLI3 Antibody (aa41-57) - Additional Information**Gene ID** 2737**Other Names**

Transcriptional activator GLI3, GLI3 form of 190 kDa, GLI3-190, GLI3 full length protein, GLI3FL, Transcriptional repressor GLI3R, GLI3 C-terminally truncated form, GLI3 form of 83 kDa, GLI3-83, GLI3

Target/Specificity

Amino acids 41-57 of human Gli-3 protein.

Reconstitution & Storage

Long term: -20°C; Short term: +4°C. Avoid repeat freeze-thaw cycles.

Precautions

GLI3 Antibody (aa41-57) is for research use only and not for use in diagnostic or therapeutic procedures.

GLI3 Antibody (aa41-57) - Protein Information**Name** GLI3**Function**

Has a dual function as a transcriptional activator and a repressor of the sonic hedgehog (Shh) pathway, and plays a role in limb development. The full-length GLI3 form (GLI3FL) after phosphorylation and nuclear translocation, acts as an activator (GLI3A) while GLI3R, its C-terminally truncated form, acts as a repressor. A proper balance between the GLI3 activator and the repressor GLI3R, rather than the repressor gradient itself or the activator/repressor ratio gradient, specifies limb digit number and identity. In concert with TRPS1, plays a role in regulating the size of the zone of distal chondrocytes, in restricting the zone of PTHLH expression in distal cells and in activating chondrocyte proliferation. Binds to the minimal GLI- consensus sequence 5'-GGGTGGTC-3'.

Cellular Location

Nucleus. Cytoplasm. Cell projection, cilium. Note=GLI3FL is localized predominantly in the cytoplasm while GLI3R resides mainly in the nucleus. Ciliary accumulation requires the presence of KIF7 and SMO. Translocation to the nucleus is promoted by interaction with ZIC1

Tissue Location

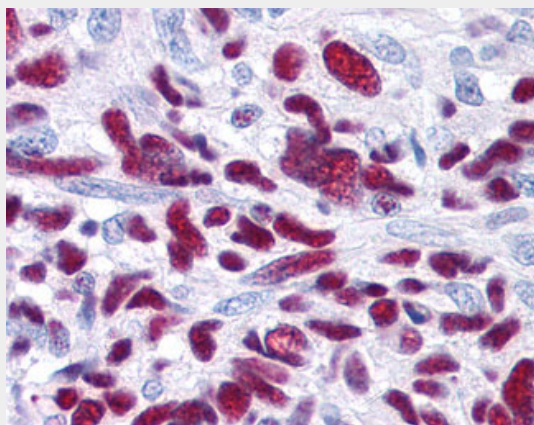
Is expressed in a wide variety of normal adult tissues, including lung, colon, spleen, placenta, testis, and myometrium

GLI3 Antibody (aa41-57) - Protocols

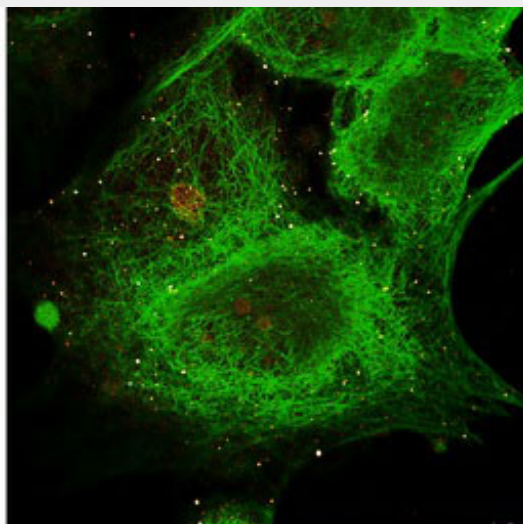
Provided below are standard protocols that you may find useful for product applications.

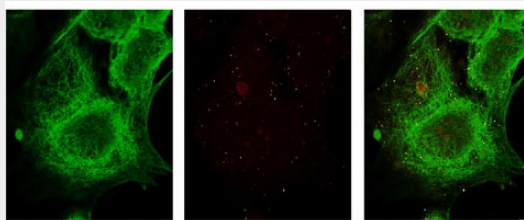
- [Western Blot](#)
- [Blocking Peptides](#)
- [Dot Blot](#)
- [Immunohistochemistry](#)
- [Immunofluorescence](#)
- [Immunoprecipitation](#)
- [Flow Cytometry](#)
- [Cell Culture](#)

GLI3 Antibody (aa41-57) - Images



Anti-GLI3 antibody IHC of human brain-glioblastoma.



Anti-Gli-3 Antibody - Immunofluorescence.**Anti-Gli-3 Antibody - Immunofluorescence.****GLI3 Antibody (aa41-57) - Background**

Has a dual function as a transcriptional activator and a repressor of the sonic hedgehog (Shh) pathway, and plays a role in limb development. The full-length GLI3 form (GLI3FL) after phosphorylation and nuclear translocation, acts as an activator (GLI3A) while GLI3R, its C-terminally truncated form, acts as a repressor. A proper balance between the GLI3 activator and the repressor GLI3R, rather than the repressor gradient itself or the activator/repressor ratio gradient, specifies limb digit number and identity. In concert with TRPS1, plays a role in regulating the size of the zone of distal chondrocytes, in restricting the zone of PTHLH expression in distal cells and in activating chondrocyte proliferation. Binds to the minimal GLI-consensus sequence 5'-GGGTGGTC-3'.

GLI3 Antibody (aa41-57) - References

- Ruppert J.M.,et al.Mol. Cell. Biol. 10:5408-5415(1990).
Kalff-Suske M.,et al.Hum. Mol. Genet. 8:1769-1777(1999).
Hillier L.W.,et al.Nature 424:157-164(2003).
Scherer S.W.,et al.Science 300:767-772(2003).
Ruppert J.M.,et al.Mol. Cell. Biol. 8:3104-3113(1988).