

ROBO1 Antibody (aa1632-1644)
Rabbit Polyclonal Antibody
Catalog # ALS11243**Specification**

ROBO1 Antibody (aa1632-1644) - Product Information

Application	IHC, IF
Primary Accession	Q9Y6N7
Reactivity	Human, Mouse, Rat, Dog
Host	Rabbit
Clonality	Polyclonal
Calculated MW	181kDa KDa

ROBO1 Antibody (aa1632-1644) - Additional Information**Gene ID** 6091**Other Names**

Roundabout homolog 1, Deleted in U twenty twenty, H-Robo-1, ROBO1, DUTT1

Target/Specificity

Amino acids 1632-1644 of Human ROBO-1.

Reconstitution & Storage

Long term: -20°C; Short term: +4°C. Avoid repeat freeze-thaw cycles.

Precautions

ROBO1 Antibody (aa1632-1644) is for research use only and not for use in diagnostic or therapeutic procedures.

ROBO1 Antibody (aa1632-1644) - Protein Information**Name** ROBO1**Synonyms** DUTT1**Function**

Receptor for SLIT1 and SLIT2 that mediates cellular responses to molecular guidance cues in cellular migration, including axonal navigation at the ventral midline of the neural tube and projection of axons to different regions during neuronal development (PubMed:10102268, PubMed:24560577). Interaction with the intracellular domain of FLRT3 mediates axon attraction towards cells expressing NTN1 (PubMed:24560577). In axon growth cones, the silencing of the attractive effect of NTN1 by SLIT2 may require the formation of a ROBO1-DCC complex (By similarity). Plays a role in the regulation of cell migration via its interaction with MYO9B; inhibits MYO9B-mediated stimulation of RHOA GTPase activity, and thereby leads to increased levels of active, GTP-bound RHOA (PubMed:26529257). May be required for lung development (By similarity).

Cellular Location

Cell membrane; Single-pass type I membrane protein. Cell projection, axon {ECO:0000250|UniProtKB:O89026}. Endoplasmic reticulum-Golgi intermediate compartment membrane {ECO:0000250|UniProtKB:O55005}; Single-pass membrane protein {ECO:0000250|UniProtKB:O55005} Note=Detected at growth cones in thalamus neurons. Detected at growth cones in thalamus neurons (By similarity). PRRG4 prevents cell surface location and both colocalize in the Endoplasmic reticulum/Golgi adjacent to the cell nucleus (By similarity) {ECO:0000250|UniProtKB:O55005, ECO:0000250|UniProtKB:O89026}

Tissue Location

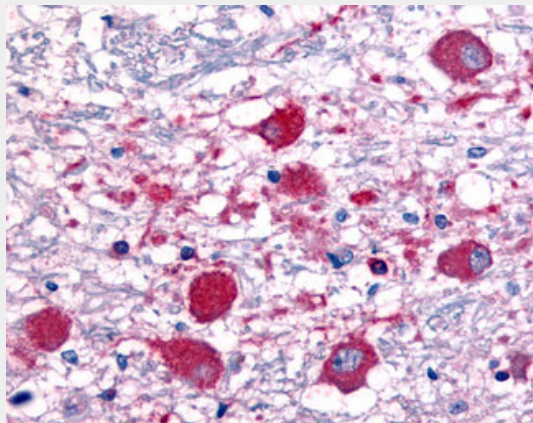
Widely expressed, with exception of kidney.

ROBO1 Antibody (aa1632-1644) - Protocols

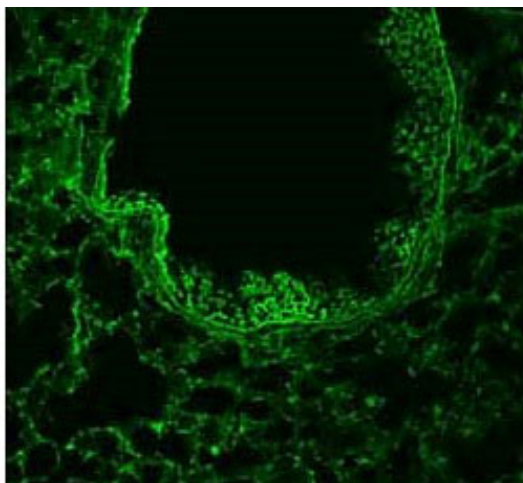
Provided below are standard protocols that you may find useful for product applications.

- [Western Blot](#)
- [Blocking Peptides](#)
- [Dot Blot](#)
- [Immunohistochemistry](#)
- [Immunofluorescence](#)
- [Immunoprecipitation](#)
- [Flow Cytometry](#)
- [Cell Culture](#)

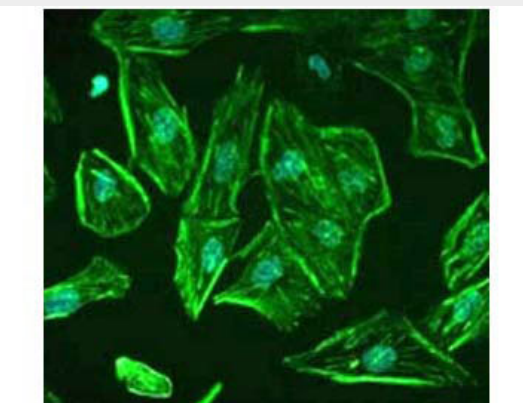
ROBO1 Antibody (aa1632-1644) - Images



Anti-ROBO1 antibody IHC of human brain.



Immunofluorescence - Anti-ROBO-1 Antibody.



Immunofluorescence - Anti-ROBO-1 Antibody.

ROBO1 Antibody (aa1632-1644) - Background

Receptor for SLIT1 and SLIT2 which are thought to act as molecular guidance cue in cellular migration, including axonal navigation at the ventral midline of the neural tube and projection of axons to different regions during neuronal development. In axon growth cones, the silencing of the attractive effect of NTN1 by SLIT2 may require the formation of a ROBO1-DCC complex. May be required for lung development.

ROBO1 Antibody (aa1632-1644) - References

Kidd T.,et al.Cell 92:205-215(1998).
Muzny D.M.,et al.Nature 440:1194-1198(2006).
Mural R.J.,et al.Submitted (SEP-2005) to the EMBL/GenBank/DDBJ databases.
Bechtel S.,et al.BMC Genomics 8:399-399(2007).
Brose K.,et al.Cell 96:795-806(1999).