

DKK1 Antibody (C-Terminus)
Goat Polyclonal Antibody
Catalog # ALS11283**Specification**

DKK1 Antibody (C-Terminus) - Product Information

Application	IHC
Primary Accession	O94907
Reactivity	Human, Mouse, Monkey, Pig, Goat, Horse, Bovine, Dog
Host	Goat
Clonality	Polyclonal
Calculated MW	29kDa KDa

DKK1 Antibody (C-Terminus) - Additional Information**Gene ID** 22943**Other Names**

Dickkopf-related protein 1, Dickkopf-1, Dkk-1, hDkk-1, SK, DKK1

Target/Specificity

Human DKK1.

Reconstitution & Storage

Store at -20°C. Minimize freezing and thawing.

Precautions

DKK1 Antibody (C-Terminus) is for research use only and not for use in diagnostic or therapeutic procedures.

DKK1 Antibody (C-Terminus) - Protein Information**Name** DKK1**Function**

Antagonizes canonical Wnt signaling by inhibiting LRP5/6 interaction with Wnt and by forming a ternary complex with the transmembrane protein KREMEN that promotes internalization of LRP5/6 (PubMed:22000856). DKKs play an important role in vertebrate development, where they locally inhibit Wnt regulated processes such as antero-posterior axial patterning, limb development, somitogenesis and eye formation. In the adult, Dkks are implicated in bone formation and bone disease, cancer and Alzheimer disease (PubMed:17143291). Inhibits the pro-apoptotic function of KREMEN1 in a Wnt-independent manner, and has anti-apoptotic activity (By similarity).

Cellular Location

Secreted.

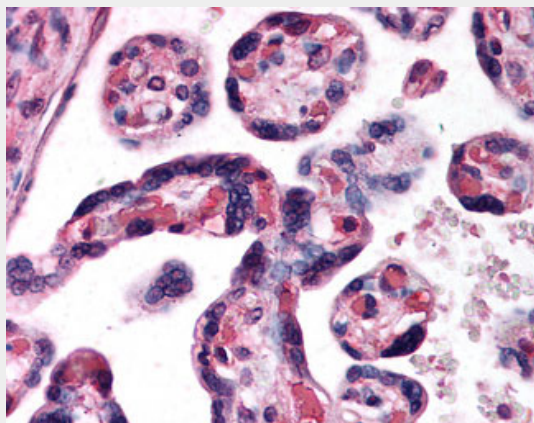
Tissue Location
Placenta.

DKK1 Antibody (C-Terminus) - Protocols

Provided below are standard protocols that you may find useful for product applications.

- [Western Blot](#)
- [Blocking Peptides](#)
- [Dot Blot](#)
- [Immunohistochemistry](#)
- [Immunofluorescence](#)
- [Immunoprecipitation](#)
- [Flow Cytometry](#)
- [Cell Culture](#)

DKK1 Antibody (C-Terminus) - Images



Anti-DKK1 antibody IHC of human placenta.

DKK1 Antibody (C-Terminus) - Background

Antagonizes canonical Wnt signaling by inhibiting LRP5/6 interaction with Wnt and by forming a ternary complex with the transmembrane protein KREMEN that promotes internalization of LRP5/6. DKKs play an important role in vertebrate development, where they locally inhibit Wnt regulated processes such as antero- posterior axial patterning, limb development, somitogenesis and eye formation. In the adult, Dkks are implicated in bone formation and bone disease, cancer and Alzheimer disease.

DKK1 Antibody (C-Terminus) - References

Fedi P.,et al.J. Biol. Chem. 274:19465-19472(1999).
Krupnik V.E.,et al.Gene 238:301-313(1999).
Tate G.,et al.Submitted (NOV-1998) to the EMBL/GenBank/DDBJ databases.
Roessler E.,et al.Cytogenet. Cell Genet. 89:220-224(2000).
Clark H.F.,et al.Genome Res. 13:2265-2270(2003).