

**CHD2 Antibody (aa1595-1611)**  
**Rabbit Polyclonal Antibody**  
**Catalog # ALS11287****Specification**

---

**CHD2 Antibody (aa1595-1611) - Product Information**

Application	IHC
Primary Accession	<a href="#">O14647</a>
Reactivity	Human
Host	Rabbit
Clonality	Polyclonal
Calculated MW	211kDa KDa

**CHD2 Antibody (aa1595-1611) - Additional Information****Gene ID** 1106**Other Names**

Chromodomain-helicase-DNA-binding protein 2, CHD-2, 3.6.4.12, ATP-dependent helicase CHD2, CHD2

**Target/Specificity**

Amino acids 1595 to 1611 of human CHD2

**Reconstitution & Storage**

Short term 4°C, long term aliquot and store at -20°C, avoid freeze thaw cycles.

**Precautions**

CHD2 Antibody (aa1595-1611) is for research use only and not for use in diagnostic or therapeutic procedures.

**CHD2 Antibody (aa1595-1611) - Protein Information****Name** CHD2**Function**

DNA-binding helicase that specifically binds to the promoter of target genes, leading to chromatin remodeling, possibly by promoting deposition of histone H3.3. Involved in myogenesis via interaction with MYOD1: binds to myogenic gene regulatory sequences and mediates incorporation of histone H3.3 prior to the onset of myogenic gene expression, promoting their expression (By similarity).

**Cellular Location**

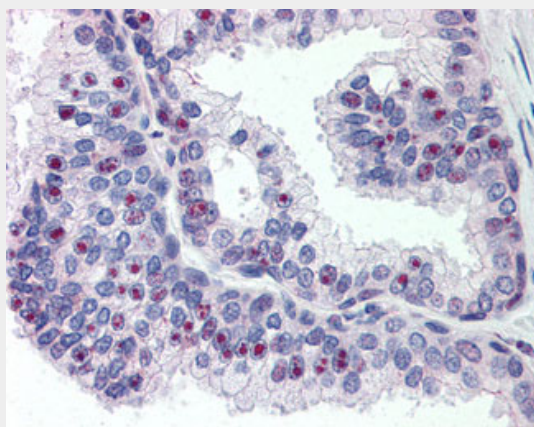
Nucleus. Note=Binds to myogenic gene promoters.

**CHD2 Antibody (aa1595-1611) - Protocols**

Provided below are standard protocols that you may find useful for product applications.

- [Western Blot](#)
- [Blocking Peptides](#)
- [Dot Blot](#)
- [Immunohistochemistry](#)
- [Immunofluorescence](#)
- [Immunoprecipitation](#)
- [Flow Cytometry](#)
- [Cell Culture](#)

#### **CHD2 Antibody (aa1595-1611) - Images**



Anti-CHD2 antibody IHC of human prostate.

#### **CHD2 Antibody (aa1595-1611) - Background**

DNA-binding helicase that specifically binds to the promoter of target genes, leading to chromatin remodeling, possibly by promoting deposition of histone H3.3. Involved in myogenesis via interaction with MYOD1: binds to myogenic gene regulatory sequences and mediates incorporation of histone H3.3 prior to the onset of myogenic gene expression, promoting their expression (By similarity).

#### **CHD2 Antibody (aa1595-1611) - References**

Woodage T., et al. Proc. Natl. Acad. Sci. U.S.A. 94:11472-11477(1997).  
Kalnina N., et al. Submitted (MAY-2003) to the EMBL/GenBank/DDBJ databases.  
Zody M.C., et al. Nature 440:671-675(2006).  
Mural R.J., et al. Submitted (JUL-2005) to the EMBL/GenBank/DDBJ databases.  
Bechtel S., et al. BMC Genomics 8:399-399(2007).