

**CD121b / IL1R2 Antibody**  
**Rabbit Polyclonal Antibody**  
**Catalog # ALS11331****Specification**

---

**CD121b / IL1R2 Antibody - Product Information**

Application	IHC
Primary Accession	<a href="#">P27930</a>
Reactivity	Human
Host	Rabbit
Clonality	Polyclonal
Calculated MW	45kDa KDa

**CD121b / IL1R2 Antibody - Additional Information****Gene ID** 7850**Other Names**

Interleukin-1 receptor type 2, IL-1R-2, IL-1RT-2, IL-1RT2, CD121 antigen-like family member B, CDw121b, IL-1 type II receptor, Interleukin-1 receptor beta, IL-1R-beta, Interleukin-1 receptor type II, CD121b, Interleukin-1 receptor type 2, membrane form, mL-1R2, mL-1RII, Interleukin-1 receptor type 2, soluble form, sIL-1R2, sIL-1RII, IL1R2, IL1RB

**Target/Specificity**

Recombinant human IL-1R type II.

**Reconstitution & Storage**

Store vial at -20 C prior to opening. Dilute only prior to immediate use. For extended storage aliquot contents and freeze at -20 C or below. Avoid cycles of freezing and thawing.

**Precautions**

CD121b / IL1R2 Antibody is for research use only and not for use in diagnostic or therapeutic procedures.

**CD121b / IL1R2 Antibody - Protein Information****Name** IL1R2**Synonyms** IL1RB**Function**

Non-signaling receptor for IL1A, IL1B and IL1RN. Reduces IL1B activities. Serves as a decoy receptor by competitive binding to IL1B and preventing its binding to IL1R1. Also modulates cellular response through non-signaling association with IL1RAP after binding to IL1B. IL1R2 (membrane and secreted forms) preferentially binds IL1B and poorly IL1A and IL1RN. The secreted IL1R2 recruits secreted IL1RAP with high affinity; this complex formation may be the dominant mechanism for neutralization of IL1B by secreted/soluble receptors.

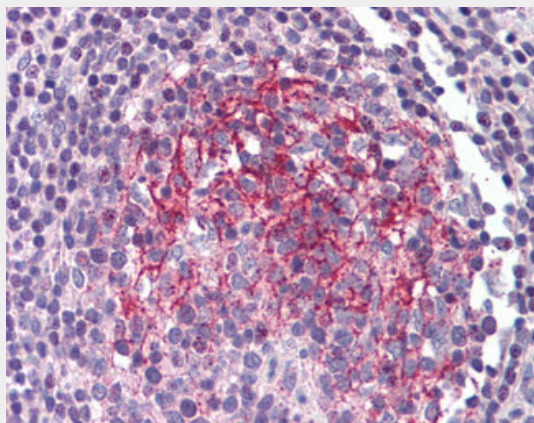
**Cellular Location**

[Isoform Short]: Secreted

**CD121b / IL1R2 Antibody - Protocols**

Provided below are standard protocols that you may find useful for product applications.

- [Western Blot](#)
- [Blocking Peptides](#)
- [Dot Blot](#)
- [Immunohistochemistry](#)
- [Immunofluorescence](#)
- [Immunoprecipitation](#)
- [Flow Cytometry](#)
- [Cell Culture](#)

**CD121b / IL1R2 Antibody - Images**

Anti-IL1R2 antibody IHC of human small intestine, Peyer's patch.

**CD121b / IL1R2 Antibody - Background**

Non-signaling receptor for IL1A, IL1B and IL1RN. Reduces IL1B activities. Serves as a decoy receptor by competitive binding to IL1B and preventing its binding to IL1R1. Also modulates cellular response through non-signaling association with IL1RAP after binding to IL1B. IL1R2 (membrane and secreted forms) preferentially binds IL1B and poorly IL1A and IL1RN. The secreted IL1R2 recruits secreted IL1RAP with high affinity; this complex formation may be the dominant mechanism for neutralization of IL1B by secreted/soluble receptors.

**CD121b / IL1R2 Antibody - References**

McMahan C.J., et al. EMBO J. 10:2821-2832(1991).  
Liu C., et al. J. Biol. Chem. 271:20965-20972(1996).  
Chou H.-H., et al. Submitted (OCT-1996) to the EMBL/GenBank/DDBJ databases.  
Hillier L.W., et al. Nature 434:724-731(2005).  
Mural R.J., et al. Submitted (SEP-2005) to the EMBL/GenBank/DDBJ databases.