

ING1 Antibody (aa285-296)
Goat Polyclonal Antibody
Catalog # ALS11338**Specification**

ING1 Antibody (aa285-296) - Product Information

Application	IHC
Primary Accession	O9UK53
Reactivity	Human
Host	Goat
Clonality	Polyclonal
Calculated MW	47kDa KDa

ING1 Antibody (aa285-296) - Additional Information**Gene ID** 3621**Other Names**

Inhibitor of growth protein 1, ING1

Target/Specificity

Aa 285-296 of Human p33 ING1 protein (Inhibitor of growth family, member 1). This sequence shows 100% homology to all splice variants for ING1.

Reconstitution & Storage

+4°C or -20°C, Avoid repeated freezing and thawing.

Precautions

ING1 Antibody (aa285-296) is for research use only and not for use in diagnostic or therapeutic procedures.

ING1 Antibody (aa285-296) - Protein Information**Name** ING1**Function**

Cooperates with p53/TP53 in the negative regulatory pathway of cell growth by modulating p53-dependent transcriptional activation. Implicated as a tumor suppressor gene.

Cellular Location

Nucleus.

Tissue Location

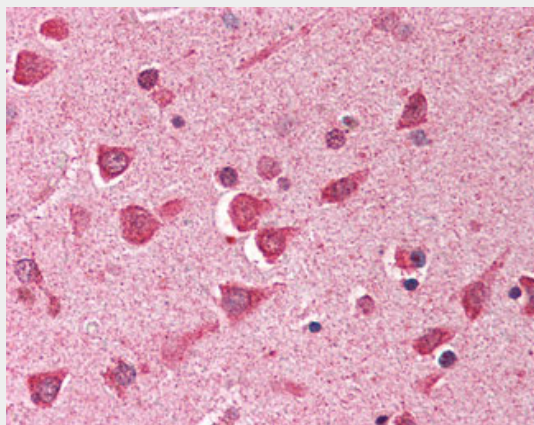
Isoform 2 was expressed in all normal tissues and cells examined, as well as in all breast cancer and melanoma cell lines examined. Isoform 3 was expressed in testis, liver, and kidney, weakly expressed in colon and brain and not expressed in breast and cultured melanocytes. Isoform 4 was highly expressed in testis and weakly expressed in brain, but not expressed in breast, colon, kidney, melanocytes, breast cancer or melanoma cell lines

ING1 Antibody (aa285-296) - Protocols

Provided below are standard protocols that you may find useful for product applications.

- [Western Blot](#)
- [Blocking Peptides](#)
- [Dot Blot](#)
- [Immunohistochemistry](#)
- [Immunofluorescence](#)
- [Immunoprecipitation](#)
- [Flow Cytometry](#)
- [Cell Culture](#)

ING1 Antibody (aa285-296) - Images



Anti-ING1 antibody IHC of human brain, cortex.

ING1 Antibody (aa285-296) - Background

Cooperates with p53/TP53 in the negative regulatory pathway of cell growth by modulating p53-dependent transcriptional activation. Implicated as a tumor suppressor gene.

ING1 Antibody (aa285-296) - References

- Garkavtsev I.A., et al. Nat. Genet. 14:415-420(1996).
Garkavtsev I.A., et al. Nat. Genet. 23:373-373(1999).
Jaeger D., et al. Cancer Res. 59:6197-6204(1999).
Baranova A.V., et al. Mol. Biol. (Mosk.) 34:263-269(2000).
Gunduz M., et al. Cancer Res. 60:3143-3146(2000).