

**AATF Antibody (C-Terminus)**  
**Rabbit Polyclonal Antibody**  
**Catalog # ALS11370****Specification**

---

**AATF Antibody (C-Terminus) - Product Information**

Application	IF, IHC
Primary Accession	<a href="#">O9NY61</a>
Reactivity	Human, Mouse
Host	Rabbit
Clonality	Polyclonal
Calculated MW	63kDa KDa

**AATF Antibody (C-Terminus) - Additional Information****Gene ID** 26574**Other Names**

Protein AATF, Apoptosis-antagonizing transcription factor, Rb-binding protein Che-1, AATF, CHE1, DED

**Target/Specificity**

12 amino acid peptide from near the carboxy terminus of human AATF

**Reconstitution & Storage**

Short term 4°C, long term aliquot and store at -20°C, avoid freeze thaw cycles. Store undiluted.

**Precautions**

AATF Antibody (C-Terminus) is for research use only and not for use in diagnostic or therapeutic procedures.

**AATF Antibody (C-Terminus) - Protein Information****Name** AATF ([HGNC:19235](#))**Synonyms** CHE1, DED**Function**

Part of the small subunit (SSU) processome, first precursor of the small eukaryotic ribosomal subunit. During the assembly of the SSU processome in the nucleolus, many ribosome biogenesis factors, an RNA chaperone and ribosomal proteins associate with the nascent pre- rRNA and work in concert to generate RNA folding, modifications, rearrangements and cleavage as well as targeted degradation of pre- ribosomal RNA by the RNA exosome (PubMed:<a href="http://www.uniprot.org/citations/34516797" target="\_blank">34516797</a>). May function as a general inhibitor of the histone deacetylase HDAC1. Binding to the pocket region of RB1 may displace HDAC1 from RB1/E2F complexes, leading to activation of E2F target genes and cell cycle progression. Conversely, displacement of HDAC1 from SP1 bound to the CDKN1A promoter leads to increased expression of this CDK inhibitor and blocks cell cycle progression. Also antagonizes

PAWR mediated induction of aberrant amyloid peptide production in Alzheimer disease (presenile and senile dementia), although the molecular basis for this phenomenon has not been described to date.

**Cellular Location**

Nucleus, nucleolus

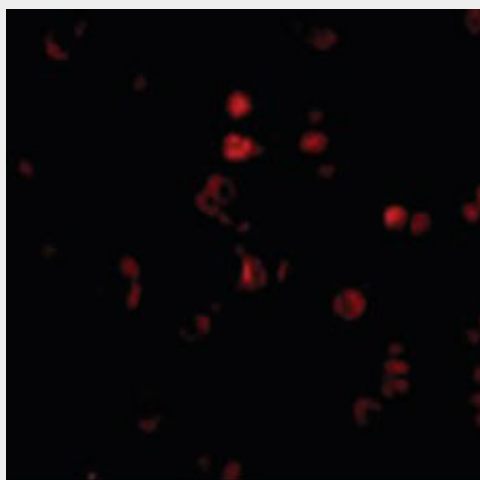
**Tissue Location**

Ubiquitously expressed. Expressed at high levels in brain, heart, kidney, placenta and thymus

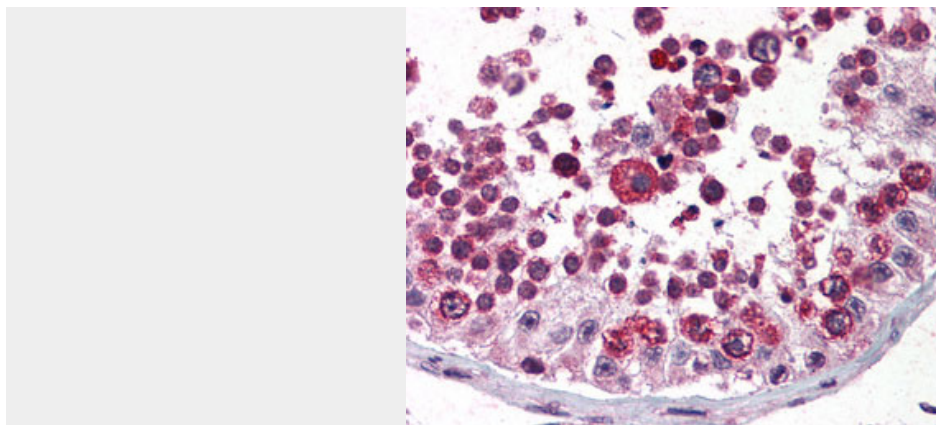
**AATF Antibody (C-Terminus) - Protocols**

Provided below are standard protocols that you may find useful for product applications.

- [Western Blot](#)
- [Blocking Peptides](#)
- [Dot Blot](#)
- [Immunohistochemistry](#)
- [Immunofluorescence](#)
- [Immunoprecipitation](#)
- [Flow Cytometry](#)
- [Cell Culture](#)

**AATF Antibody (C-Terminus) - Images**

Immunofluorescence of AATF in Human Small Intestine cells with AATF antibody at 20 ug/ml.



Anti-AATF antibody IHC of human testis.

### **AATF Antibody (C-Terminus) - Background**

May function as a general inhibitor of the histone deacetylase HDAC1. Binding to the pocket region of RB1 may displace HDAC1 from RB1/E2F complexes, leading to activation of E2F target genes and cell cycle progression. Conversely, displacement of HDAC1 from SP1 bound to the CDKN1A promoter leads to increased expression of this CDK inhibitor and blocks cell cycle progression. Also antagonizes PAWR mediated induction of aberrant amyloid peptide production in Alzheimer disease (presenile and senile dementia), although the molecular basis for this phenomenon has not been described to date.

### **AATF Antibody (C-Terminus) - References**

- Lindfors K.,et al.Biochem. Biophys. Res. Commun. 276:660-666(2000).
- Fanciulli M.,et al.FASEB J. 14:904-912(2000).
- Ota T.,et al.Nat. Genet. 36:40-45(2004).
- Zody M.C.,et al.Nature 440:1045-1049(2006).
- Mural R.J.,et al.Submitted (JUL-2005) to the EMBL/GenBank/DDBJ databases.