

BCAP31 / BAP31 Antibody (C-Terminus)
Rabbit Polyclonal Antibody
Catalog # ALS11381**Specification****BCAP31 / BAP31 Antibody (C-Terminus) - Product Information**

Application	WB, IHC
Primary Accession	P51572
Reactivity	Human, Mouse, Rat
Host	Rabbit
Clonality	Polyclonal
Calculated MW	28kDa KDa

BCAP31 / BAP31 Antibody (C-Terminus) - Additional Information**Gene ID** 10134**Other Names**

B-cell receptor-associated protein 31, BCR-associated protein 31, Bap31, 6C6-AG tumor-associated antigen, Protein CDM, p28, BCAP31, BAP31, DXS1357E

Target/Specificity

17 amino acid peptide from near the carboxy terminus of human BAP31

Reconstitution & Storage

Short term 4°C, long term aliquot and store at -20°C, avoid freeze thaw cycles. Store undiluted.

Precautions

BCAP31 / BAP31 Antibody (C-Terminus) is for research use only and not for use in diagnostic or therapeutic procedures.

BCAP31 / BAP31 Antibody (C-Terminus) - Protein Information**Name** BCAP31 ([HGNC:16695](#))**Function**

Functions as a chaperone protein (PubMed: [9396746](http://www.uniprot.org/citations/9396746) target="_blank">9396746, PubMed: [18287538](http://www.uniprot.org/citations/18287538) target="_blank">18287538). Is one of the most abundant endoplasmic reticulum (ER) proteins (PubMed: [9396746](http://www.uniprot.org/citations/9396746) target="_blank">9396746, PubMed: [18287538](http://www.uniprot.org/citations/18287538) target="_blank">18287538). Plays a role in the export of secreted proteins in the ER, the recognition of abnormally folded protein and their targeting to the ER associated-degradation (ERAD) (PubMed: [9396746](http://www.uniprot.org/citations/9396746) target="_blank">9396746, PubMed: [18287538](http://www.uniprot.org/citations/18287538) target="_blank">18287538). Also serves as a cargo receptor for the export of transmembrane proteins (By similarity). Plays a role in the assembly of the mitochondrial membrane respiratory chain NADH dehydrogenase (Complex I) by stimulating the translocation of

NDUFS4 and NDUFB11 from the cytosol to the mitochondria via interaction with TOMM40 (PubMed:31206022). In response to ER stress, delocalizes from the ER-mitochondria contact sites and binds BCL2 (PubMed:31206022). May be involved in CASP8-mediated apoptosis (PubMed:10958671).

Cellular Location

Endoplasmic reticulum membrane; Multi-pass membrane protein Endoplasmic reticulum-Golgi intermediate compartment membrane; Multi-pass membrane protein. Note=May shuttle between the ER and the intermediate compartment/cis-Golgi complex (PubMed:9396746). Associates with the mitochondria-associated endoplasmic reticulum membrane via interaction with TOMM40 (PubMed:31206022)

Tissue Location

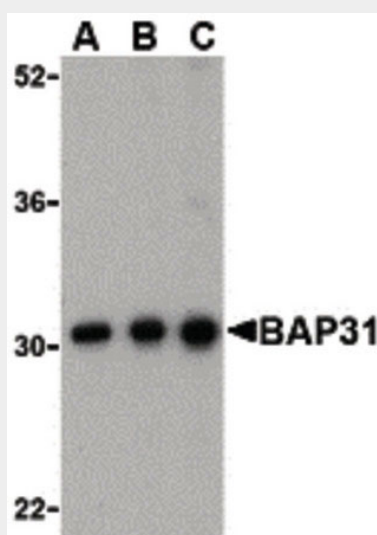
Ubiquitous. Highly expressed in neurons and discrete endocrine cells.

BCAP31 / BAP31 Antibody (C-Terminus) - Protocols

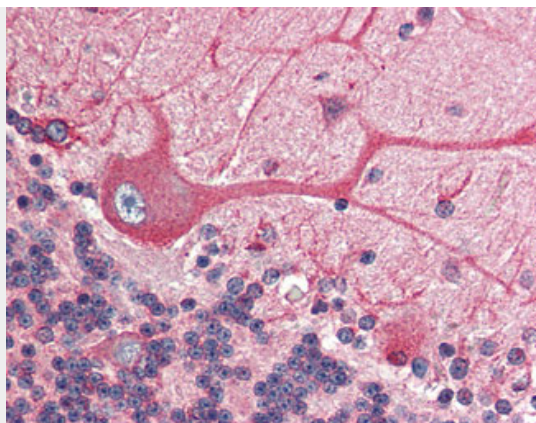
Provided below are standard protocols that you may find useful for product applications.

- [Western Blot](#)
- [Blocking Peptides](#)
- [Dot Blot](#)
- [Immunohistochemistry](#)
- [Immunofluorescence](#)
- [Immunoprecipitation](#)
- [Flow Cytometry](#)
- [Cell Culture](#)

BCAP31 / BAP31 Antibody (C-Terminus) - Images



Western blot of BAP31 in Ramos cell lysate with BAP31 antibody at (A) 0.5, (B) 1 and (C) 2ug/ml.



Anti-BCAP31 / BAP31 antibody IHC of human brain, cerebellum.

BCAP31 / BAP31 Antibody (C-Terminus) - Background

Functions as a chaperone protein. Is one of the most abundant endoplasmic reticulum (ER) proteins. Plays a role in the export of secreted proteins in the ER, the recognition of abnormally folded protein and their targeting to the ER associated-degradation (ERAD). Also serves as a cargo receptor for the export of transmembrane proteins. May be involved in CASP8- mediated apoptosis.

BCAP31 / BAP31 Antibody (C-Terminus) - References

Mosser J.,et al.Genomics 22:469-471(1994).
Li E.,et al.Eur. J. Biochem. 238:631-638(1996).
Adachi T.,et al.EMBO J. 15:1534-1541(1996).
Ota T.,et al.Nat. Genet. 36:40-45(2004).
Ross M.T.,et al.Nature 434:325-337(2005).