

**BCL2A1 Antibody (C-Terminus)**  
**Rabbit Polyclonal Antibody**  
**Catalog # ALS11382****Specification**

---

**BCL2A1 Antibody (C-Terminus) - Product Information**

Application	IF
Primary Accession	<a href="#">Q16548</a>
Reactivity	Human, Mouse
Host	Rabbit
Clonality	Polyclonal
Calculated MW	20kDa KDa

**BCL2A1 Antibody (C-Terminus) - Additional Information****Gene ID** 597**Other Names**

Bcl-2-related protein A1, Bcl-2-like protein 5, Bcl2-L-5, Hemopoietic-specific early response protein, Protein BFL-1, Protein GRS, BCL2A1, BCL2L5, BFL1, GRS, HBPA1

**Target/Specificity**

14 amino acid peptide from near the carboxy terminus of human Bfl-1

**Reconstitution & Storage**

Short term 4°C, long term aliquot and store at -20°C, avoid freeze thaw cycles. Store undiluted.

**Precautions**

BCL2A1 Antibody (C-Terminus) is for research use only and not for use in diagnostic or therapeutic procedures.

**BCL2A1 Antibody (C-Terminus) - Protein Information****Name** BCL2A1**Synonyms** BCL2L5, BFL1, GRS, HBPA1**Function**

Retards apoptosis induced by IL-3 deprivation. May function in the response of hemopoietic cells to external signals and in maintaining endothelial survival during infection (By similarity). Can inhibit apoptosis induced by serum starvation in the mammary epithelial cell line HC11 (By similarity).

**Cellular Location**

Cytoplasm.

**Tissue Location**

Seems to be restricted to the hematopoietic compartment. Expressed in peripheral blood, spleen,

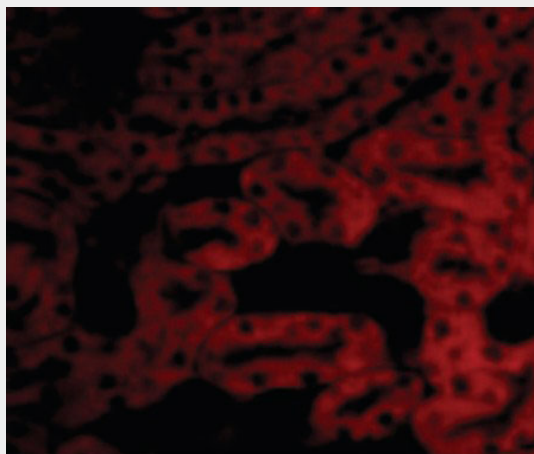
and bone marrow, at moderate levels in lung, small intestine and testis, at a minimal levels in other tissues. Also found in vascular smooth muscle cells and hematopoietic malignancies

### **BCL2A1 Antibody (C-Terminus) - Protocols**

Provided below are standard protocols that you may find useful for product applications.

- [Western Blot](#)
- [Blocking Peptides](#)
- [Dot Blot](#)
- [Immunohistochemistry](#)
- [Immunofluorescence](#)
- [Immunoprecipitation](#)
- [Flow Cytometry](#)
- [Cell Culture](#)

### **BCL2A1 Antibody (C-Terminus) - Images**



Immunofluorescence of Bcl-1 in Mouse Kidney cells with Bcl-1 antibody at 20 ug/ml.

### **BCL2A1 Antibody (C-Terminus) - Background**

Retards apoptosis induced by IL-3 deprivation. May function in the response of hemopoietic cells to external signals and in maintaining endothelial survival during infection (By similarity).

### **BCL2A1 Antibody (C-Terminus) - References**

Choi S.S.,et al.Oncogene 11:1693-1698(1995).  
Karsan A.,et al.Blood 87:3089-3096(1996).  
Kenny J.J.,et al.Oncogene 14:997-1001(1997).  
Barnes F.A.,et al.Submitted (FEB-2003) to the EMBL/GenBank/DDBJ databases.  
Kalinine N.,et al.Submitted (MAY-2003) to the EMBL/GenBank/DDBJ databases.